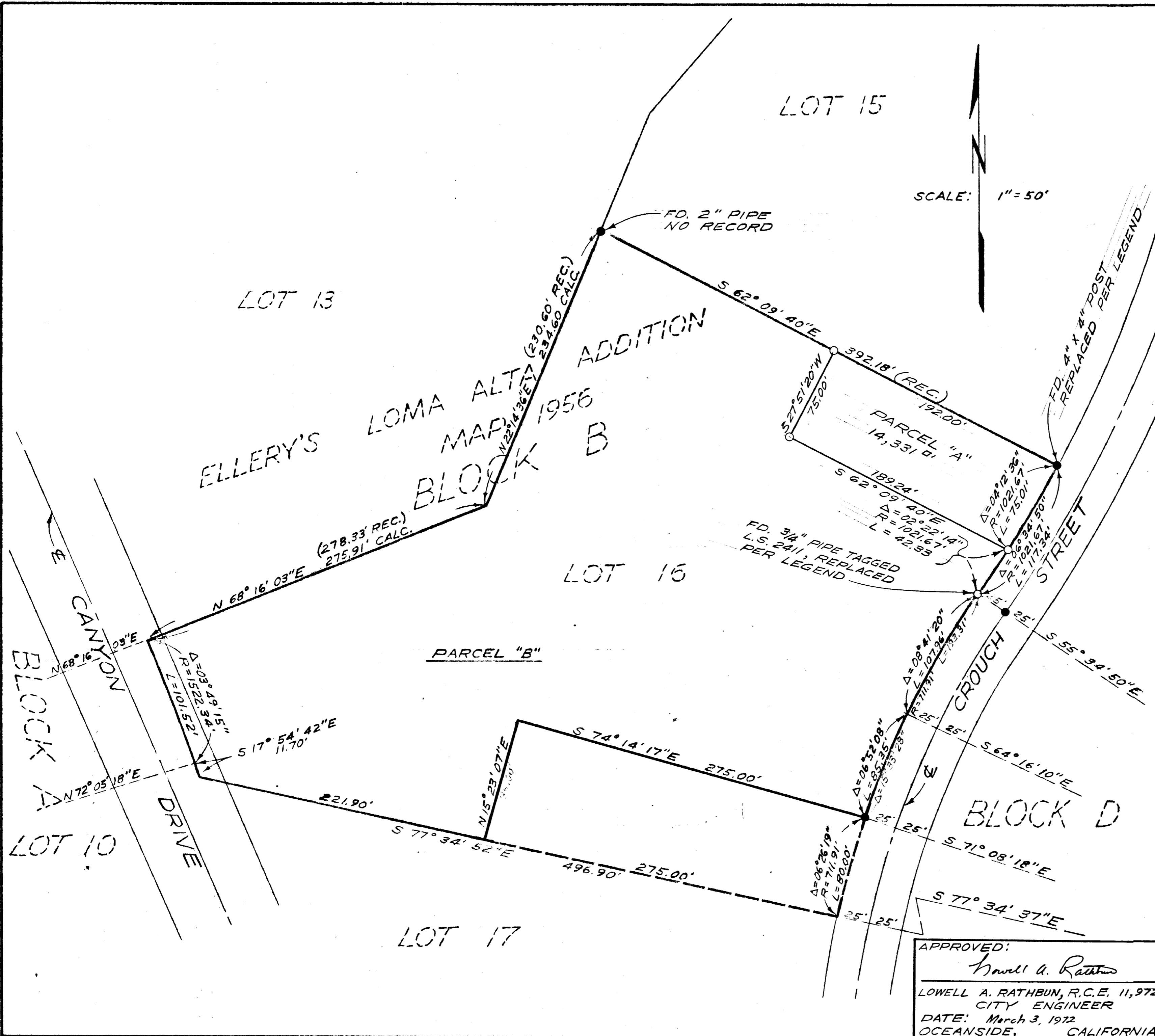


LOT SPLIT MAP No. 582



LEGAL DESCRIPTION:
 LOT 16 OF BLOCK "B" OF ELLERY'S LOMA ALTA ADDITION MAP No. 1956, CITY OF OCEANSIDE, COUNTY OF SAN DIEGO, STATE OF CALIFORNIA

LEGEND:

- SET 3/4" PIPE TAGGED L.S. 3802
- FD. 3/4" PIPE TAGGED L.S. 2411 OR AS SHOWN

BASIS OF BEARINGS:
 THE RADIAL TO THE P.R.C. ON CROUCH STREET, I.E. S 55° 34' 50" E

FRONTAGE IMPROVEMENTS ON PARCEL "B" DEFERRED BY COUNCIL ACTION 12/22/71

LOT SPLIT MAP		
FOR		
MARION M. BOE		
OCEANSIDE, CALIFORNIA		
DESIGNED:	E. BRIAN SMITH ENGINEERS	DATE:
DRAWN:	2656 STATE STREET	3-2-72
CHECKED:	CARLSBAD, CALIFORNIA	SCALE:
APPROVED:	<i>[Signature]</i>	1" = 50'
HARRY L. TRUAX, L.S. 3802		SHEET:
		1 OF 1

APPROVED:
Lowell A. Rathbun
 LOWELL A. RATHBUN, R.C.E., 11,972
 CITY ENGINEER
 DATE: March 3, 1972
 OCEANSIDE, CALIFORNIA