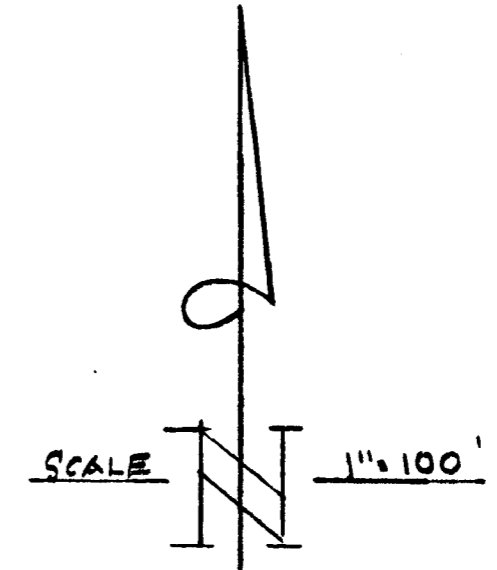


# LOT SPLIT MAP No. 580

SPLIT LOT MAP OF A PORTION OF THE SE 1/4 OF SEC. 35, T10S, R4W, SBM, IN THE CITY OF OCEANSIDE, COUNTY OF SAN DIEGO, CALIF.

ALL STREET & CONTROL POINTS WERE SET PER TIES PER CITY OF OCEANSIDE SURVEY DATA.

ALL CORNERS AND 1/4 CORNERS OF THIS SECTION WAS TIED BY USE OF GEODIMETERIZ AND WILDE T-TRANSIT



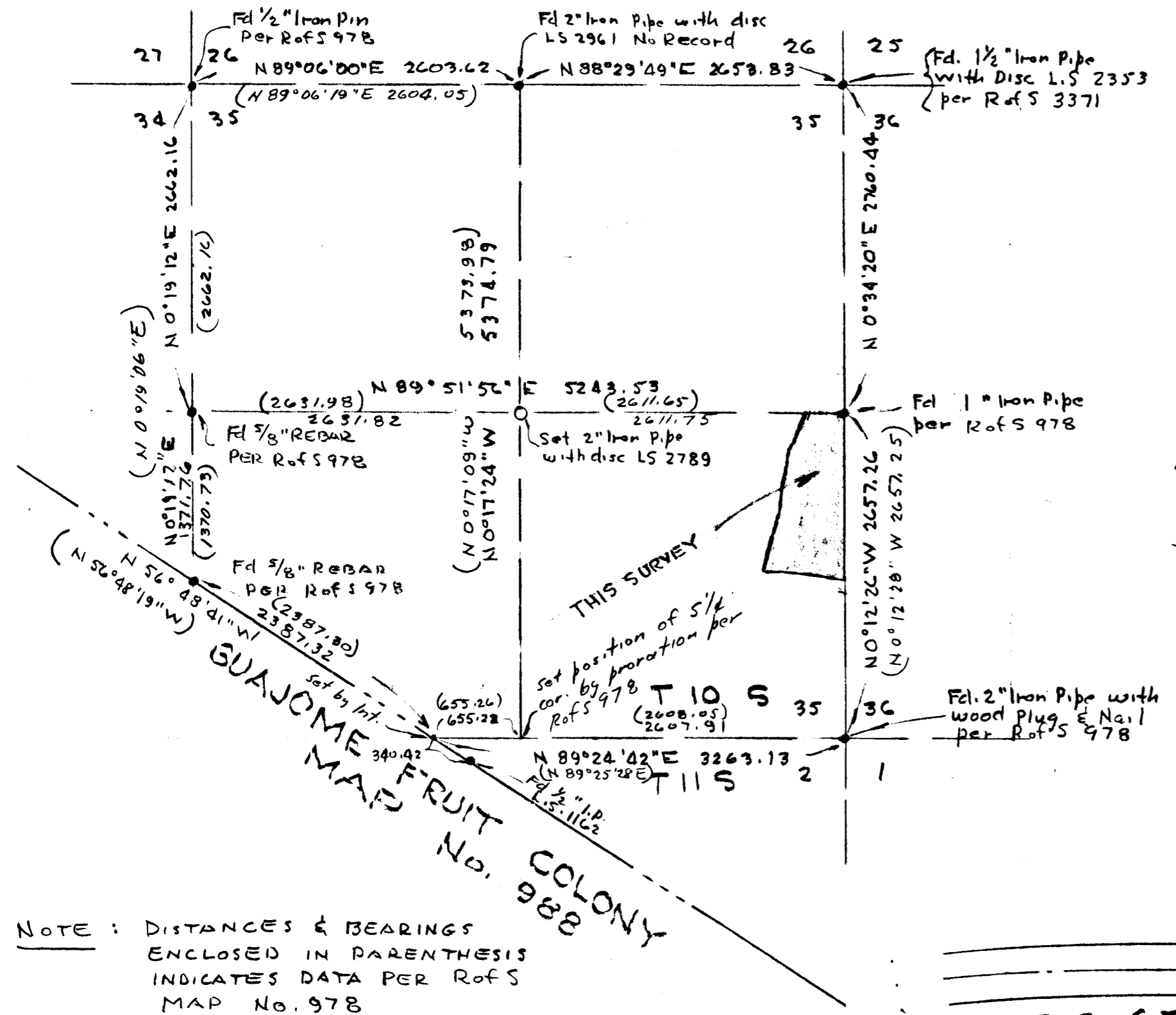
### LEGEND

- INDICATES SET 1" IRON PIPE WITH DISC L.S. 2789
- INDICATES POINTS FOUND AS SHOWN

**BASIS OF BEARINGS!**  
THE EAST-WEST CENTERLINE OF SECTION 35 AS SHOWN ON MAP 978 I.E. S 89° 51' 56" W

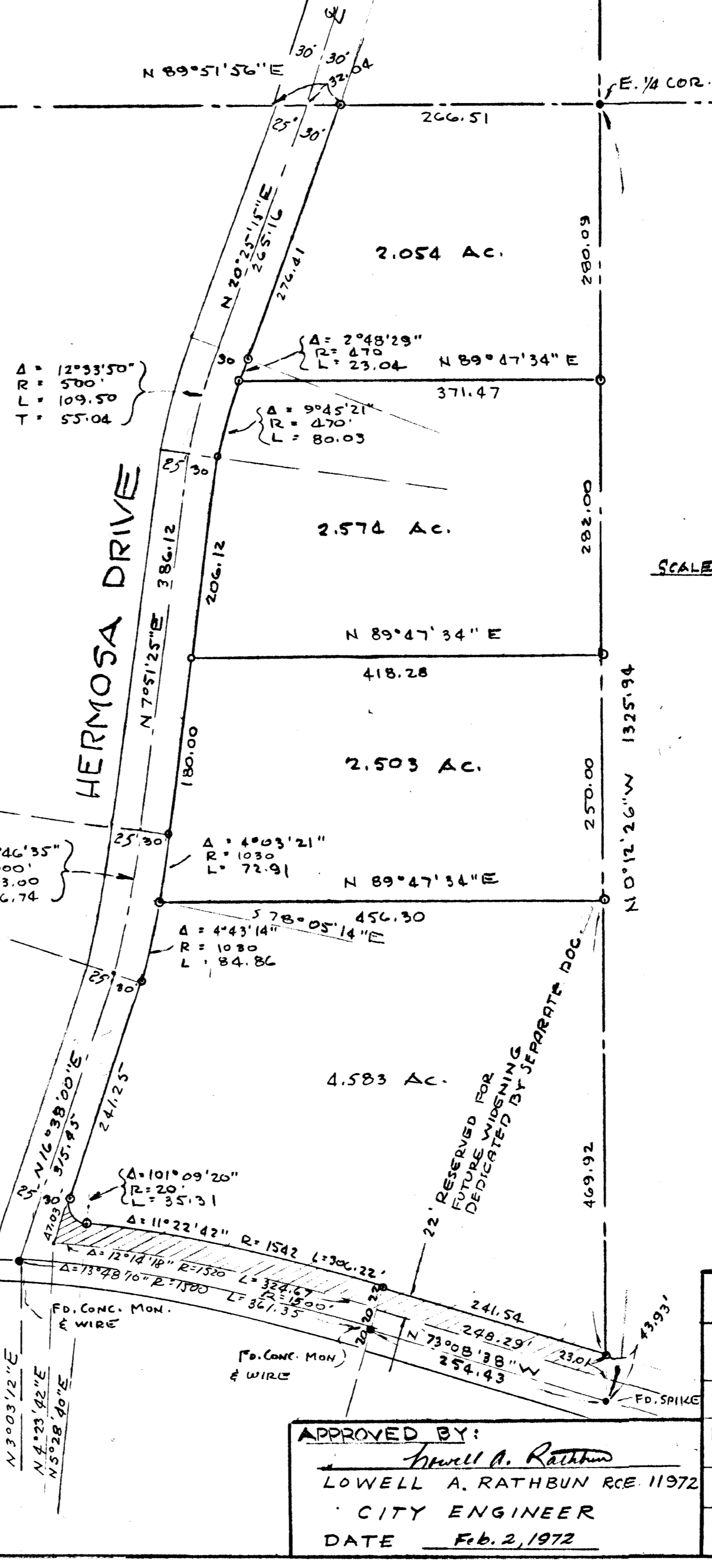
THIS MAP CORRECTLY REPRESENTS A SURVEY MADE BY ME IN CONFORMANCE WITH THE REQUIREMENTS OF THE LAND SURVEYORS ACT AT THE REQUEST OF C.R. LINVILLE IN NOV. 1971

*Gustav J. Kemptner*  
GUSTAV J. KAMPTNER L.S. 2789



NOTE: DISTANCES & BEARINGS ENCLOSED IN PARENTHESIS INDICATES DATA PER Refs MAP No. 978

R.S. 674



RESERVED FOR FUTURE WIDENING DEDICATED BY SEPARATE DOC.

APPROVED BY:  
*Lowell A. Rathbun*  
LOWELL A. RATHBUN RCE 11972  
CITY ENGINEER  
DATE Feb. 2, 1972

CITY OF OCEANSIDE, CALIF	
DIVISION OF PORTION SE 1/4 OF SEC. 35, T10S, R4W, SBM, OCEANSIDE, CALIF	
REQUESTED BY: CHARLES LINVILLE	
DRAWN BY: GJK	<i>Gustav J. Kemptner</i> GUSTAV J. KAMPTNER L.S. 2789
12-30-71	SCALE: 1"=100'
	SHEET 1 OF 1