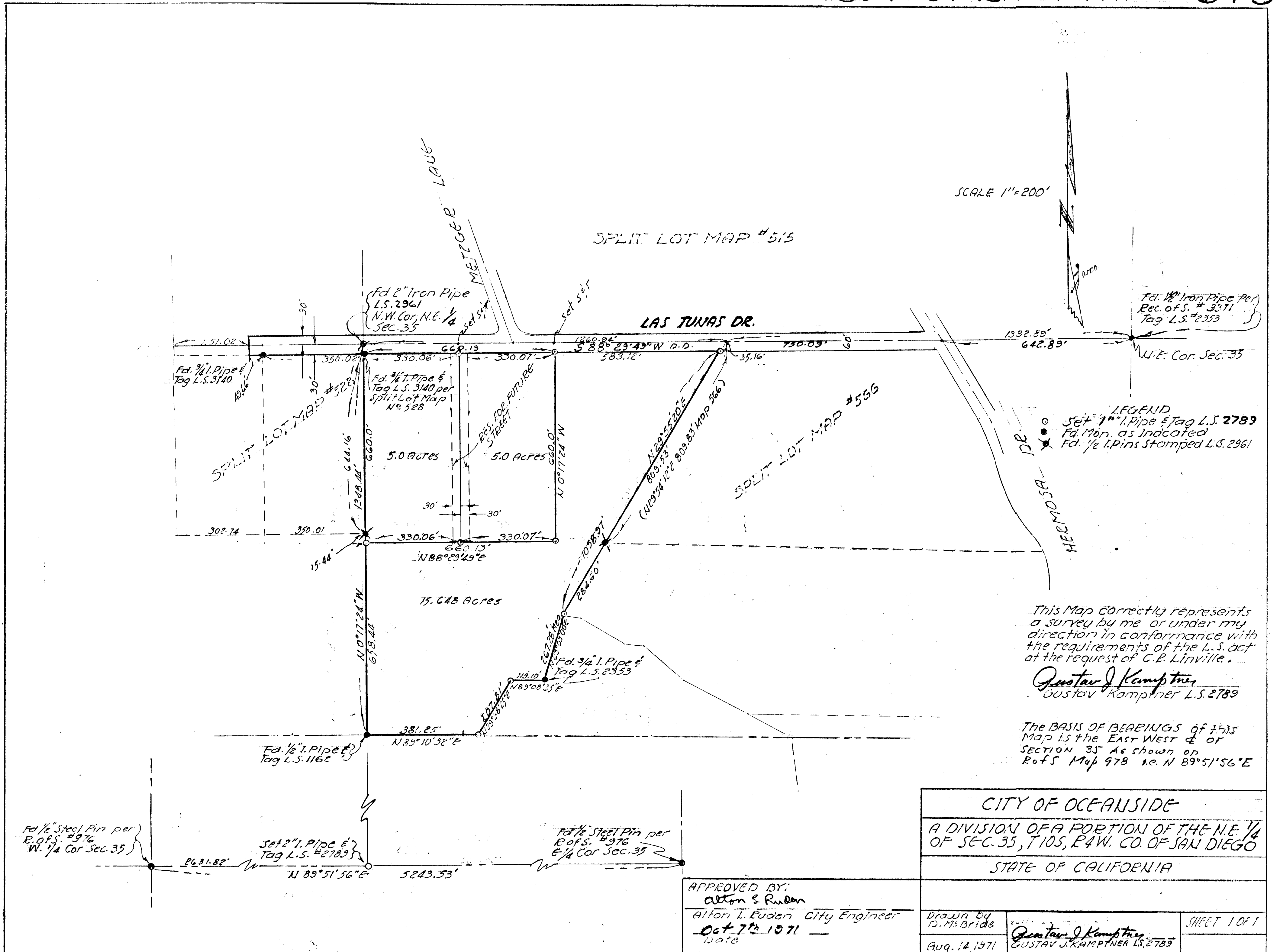


LOT SPLIT MAP # 575



SCALE 1"=200'

SPLIT LOT MAP # 515

Fd. 1/2" Iron Pipe Per
Rec. of S. # 3371
Tag L.S. # 2353

Fd. 3/4" Pipe &
Tag L.S. # 3140

Fd. 2" Iron Pipe
L.S. 2961
N.W. Cor. N.E. 1/4
Sec. 35

Fd. 3/4" Pipe &
Tag L.S. 3140 per
Split Lot Map
No 528

LEGEND
Set 1" I. Pipe & Tag L.S. 2789
Fd. Mon. as Indicated
Fd. 1/2" I. Pins Stamped L.S. 2961

This Map correctly represents
a survey by me or under my
direction in conformance with
the requirements of the L.S. Act
at the request of C.B. Linville.

Gustav J. Kamptner
Gustav Kamptner L.S. 2789

The BASIS OF BEARINGS of this
Map is the EAST WEST & OF
SECTION 35 As shown on
RofS Map 978 i.e. N 89° 51' 56" E

CITY OF OCEANSIDE
A DIVISION OF A PORTION OF THE N.E. 1/4
OF SEC. 35, T10S, R4W, CO. OF SAN DIEGO
STATE OF CALIFORNIA

APPROVED BY:
Alton S. Ruden
Alton L. Ruden City Engineer
Oct 7th 1971
Date

Drawn by
Id. M. Bride
Aug. 14, 1971
Gustav J. Kamptner
GUSTAV J. KAMPTNER L.S. 2789
SHEET 1 OF 1