

LOT SPLIT N^o 571

VALLEY VIEW HEIGHTS
MAP N^o 3373
8

LOT SPLIT
N^o 561
PARCEL 4

ELLERY HEIGHTS MAP 2356
LOT 13

PARCEL 4
AREA = 68,853 SQ. FT.

R. OF S. MAP 2860

PARCEL 1
AREA = 10,032 SQ. FT.

N 67° 55' 32" E
132.00'

PARCEL 2
AREA = 10,154 SQ. FT.

ELLERY HEIGHTS MAP N^o 2356
LOT 12

LEGAL DESCRIPTION

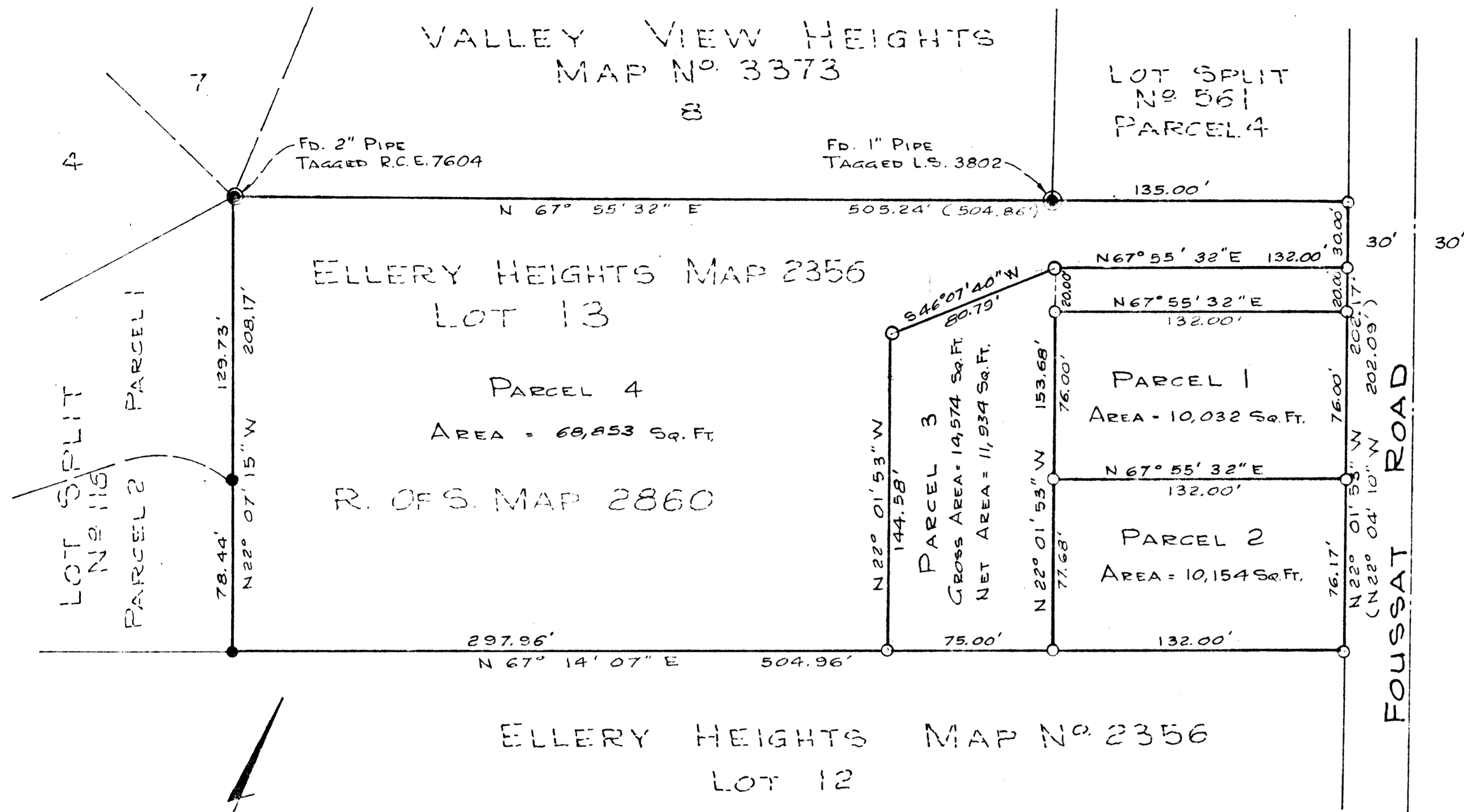
A PORTION OF LOT 13, ELLERY HEIGHTS MAP N^o 2356. SAID LOT ALSO SHOWN ON E. OF S. 2860.

LEGEND

- INDICATES FOUND 3/4" PIPE TAGGED R.C.E. 7604
- ⊙ INDICATES FOUND AS SHOWN
- INDICATES SET 3/4" PIPE TAGGED R.C.E. 13,817
- () INDICATES INFORMATION ON RECORD MAP N^o 2356.

BASIS OF BEARINGS

THE BASIS OF BEARINGS FOR THIS MAP IS THE NORTHERLY LINE OF LOT 13, ELLERY HEIGHTS, MAP N^o 2356, I.E. N 67° 55' 32" E.



SCALE 1" = 40'

APPROVED BY THE
PLANNING COMMISSION
this 30 day of AUG 1971
Resolution No. 71-PT
Secretary *Amelia S. Jones*

LOT SPLIT MAP
FOR
MR. JIM ELLIS

APPROVED: <i>Alton L. Ruden</i> ALTON L. RUDEN, R.C.E. 10,163 CITY ENGINEER DATE: 9-11-1971 OCEANSIDE, CALIFORNIA	DESIGNED: E.B.S. DRAWN: E.B.S. CHECKED: <i>E. Brian Smith</i> APPROVED: E. BRIAN SMITH, R.C.E. 13,817	E. BRIAN SMITH ENGINEERS 2656 STATE STREET CARLSBAD, CALIFORNIA	DATE: 7-26-71 SCALE: 1" = 40' SHEET: 1 OF 1
--	--	---	--