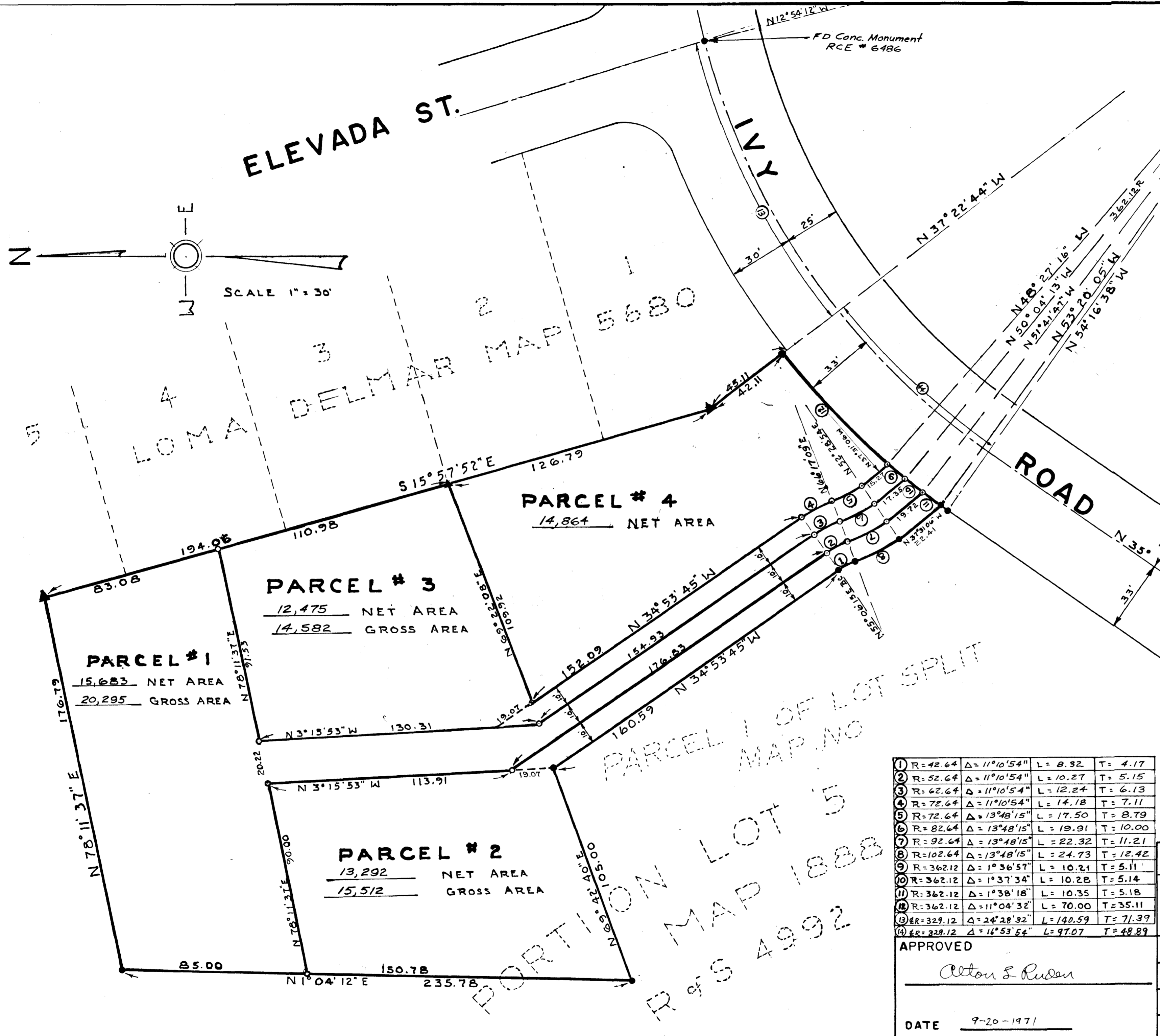


LOT SPLIT MAP NO. 510



LEGAL DESCRIPTION
 PORTION OF LOT 5, BLOCK 'C'
 MAP #1888, NORTH CARLSBAD ANNEX,
 IN THE CITY OF OCEANSIDE, COUNTY
 OF SAN DIEGO, STATE OF CALIFORNIA.

LEGEND

- ▲ INDICATES FOUND 4" x 3" V.C. PIPE FILLED WITH CONCRETE AND COPPER DISC STAMPED L.S. 2411
- INDICATES FOUND POINTS AS NOTED
- INDICATES SET 3/4" x 1 1/2" IRON PIPE WITH COPPER DISC STAMPED L.S. #3790
- FOUND 3/4" IRON PIPE WITH TAG STAMPED L.S. #3790

BASIS OF BEARING
 THE NORTHEASTERLY LINE OF LOT 5
 BLOCK 'C' R of S 4492
 I.E. S 15° 57' 52" E

APPROVED BY THE
 PLANNING COMMISSION
 this 17th day of MARCH 1971
 Resolution No. 71-P-28
 Secretary *Richard L. Parker*

NOTE:
 THIS LOT SPLIT MAP IS FILED AS A
 CONDITION APPROVAL OF A VARIANCE AS
 STATED IN PLANNING COMMISSION
 RESOLUTION NO. 71-P-28
 Final monumentation will be
 completed within 30 days after
 finalization of lot split map.

PARCEL 1 OF LOT SPLIT
 MAP NO. 510
 PORTION LOT 5
 MAP 1888
 R of S 4492

1	R=42.64	Δ=11°10'54"	L=8.32	T=4.17
2	R=52.64	Δ=11°10'54"	L=10.27	T=5.15
3	R=62.64	Δ=11°10'54"	L=12.24	T=6.13
4	R=72.64	Δ=11°10'54"	L=14.18	T=7.11
5	R=72.64	Δ=13°48'15"	L=17.50	T=8.79
6	R=82.64	Δ=13°48'15"	L=19.91	T=10.00
7	R=92.64	Δ=13°48'15"	L=22.32	T=11.21
8	R=102.64	Δ=13°48'15"	L=24.73	T=12.42
9	R=362.12	Δ=1°36'57"	L=10.21	T=5.11
10	R=362.12	Δ=1°37'34"	L=10.28	T=5.14
11	R=362.12	Δ=1°38'18"	L=10.35	T=5.18
12	R=362.12	Δ=11°04'32"	L=70.00	T=35.11
13	R=329.12	Δ=24°28'32"	L=140.59	T=71.39
14	R=329.12	Δ=16°53'54"	L=97.07	T=48.89

LOT SPLIT MAP

FOR
V.F. HOWARD
 102 EUCALYPTUS VISTA, CALIFORNIA

APPROVED
Alton S. Ruder
 DATE 9-20-1971

DESIGNED RICHARD L. PARKER
 DRAWN 1413 TAFT STREET
 CHECKED ESCONDIDO, CALIFORNIA
 APPROVED *Richard Louis Parker*
 RICHARD LOUIS PARKER L.S. 3790

DATE:
 SCALE 1" = 30'
 SHEET of