

LOT SPLIT MAP NO. 568

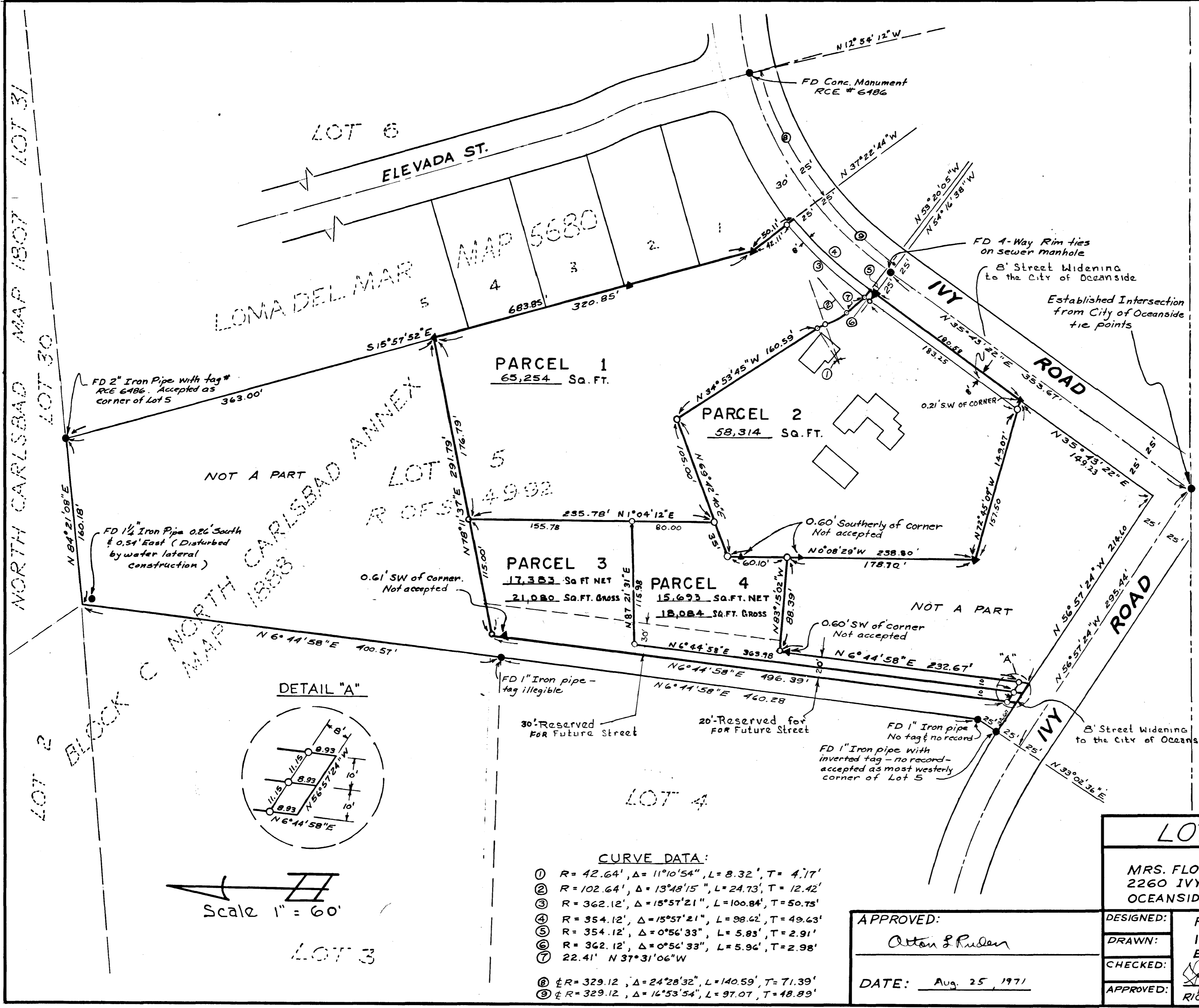
LEGAL DESCRIPTION:
 Portion of Lot 5, Block "C",
 Map #1888, North Carlsbad Annex,
 In the City of Oceanside, County
 of San Diego, State of California.

LEGEND:
 ▲ - Indicates found 4"x3" V.C. pipe
 filled with concrete and # copper
 disc stamped L.S. #2411
 ● - Indicates found points as noted.
 ○ - Indicates set 3/4" x 18" iron pipe
 with copper disc stamped L.S. #3790.

BASIS OF BEARING:
 The northeasterly line of Lot 5,
 Block "C", R. of S. 1992
 I.E. S 15°57'52"E

**APPROVED BY THE
 PLANNING COMMISSION**
 this 17th day of August, 1971
 Resolution No. 71-128
 Secretary *Richard L. Parker*

NOTE:
 This lot split map is filed as a
 condition approval of a variance as
 stated in Planning Commission
 Resolution No. 71-P28
 Final monumentation will be
 completed within 30 days after
 finalization of lot split map.

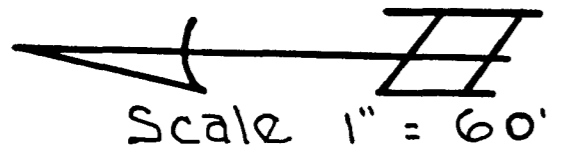
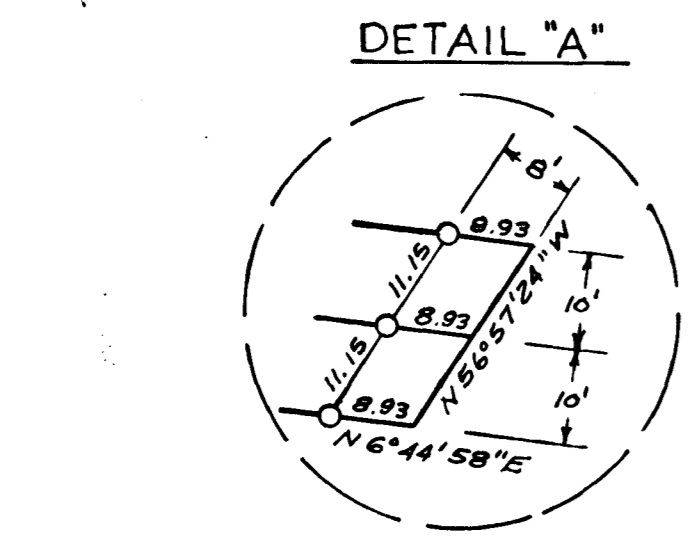


CURVE DATA:

- ① R= 42.64', Δ= 11°10'54", L= 8.32', T= 4.17'
- ② R= 102.64', Δ= 13°48'15", L= 24.73', T= 12.42'
- ③ R= 362.12', Δ= 15°57'21", L= 100.84', T= 50.75'
- ④ R= 354.12', Δ= 15°57'21", L= 98.62', T= 49.63'
- ⑤ R= 354.12', Δ= 0°56'33", L= 5.83', T= 2.91'
- ⑥ R= 362.12', Δ= 0°56'33", L= 5.96', T= 2.98'
- ⑦ 22.41' N 37°31'06"W
- ⑧ R= 329.12', Δ= 24°28'32", L= 140.59', T= 71.39'
- ⑨ R= 329.12', Δ= 16°53'54", L= 97.07', T= 48.89'

LOT SPLIT MAP		
FOR MRS. FLORA SLOOP 2260 IVY ROAD OCEANSIDE CALIFORNIA		
DESIGNED:	RICHARD L. PARKER	DATE: 8-3-71
DRAWN:	1413 TAFT STREET ESCONDIDO, CALIFORNIA	SCALE: 1"=60'
CHECKED:	<i>Richard Louis Parker</i>	SHEET: 1 OF 1
APPROVED:	RICHARD LOUIS PARKER L.S. 3790	

APPROVED:
Atton & Ruden
 DATE: Aug. 25, 1971



LOT 3