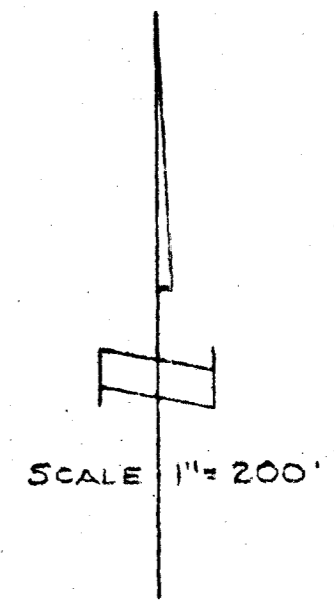
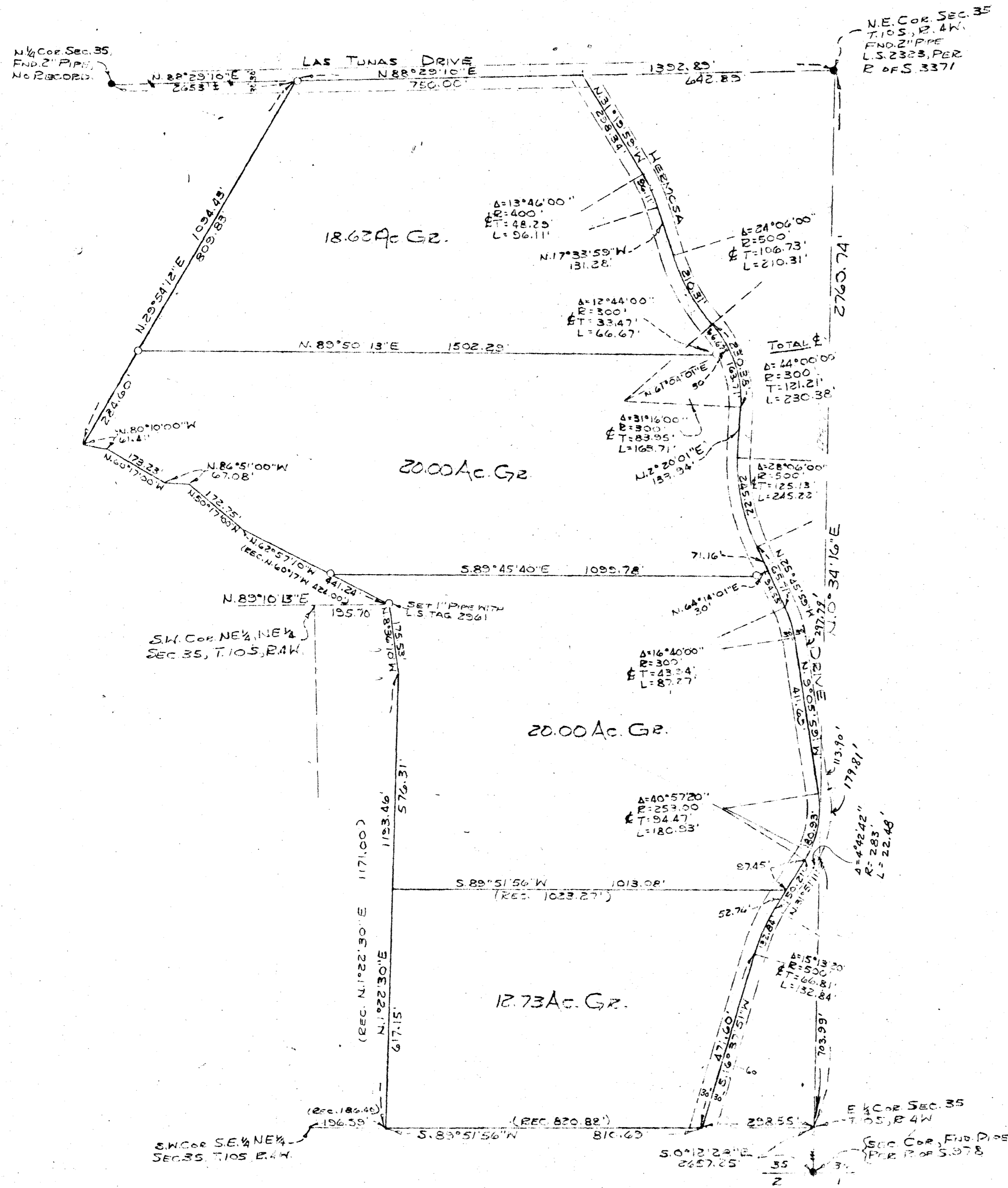


LOT SPLIT MAP NO. 566



LEGEND
 ○ = SET 1/2" STEEL PIN STAMPED L.S. 2961, UNLESS OTHERWISE NOTED.
 ● = MONUMENTS FOUND AS NOTED HEREON.

THIS MAP CORRECTLY REPRESENTS A SURVEY MADE BY ME OR UNDER MY DIRECTION IN CONFORMANCE WITH THE REQUIREMENTS OF THE LAND SURVEYORS ACT AT THE REQUEST OF MR. C. R. LINVILLE.

William Karn
 WILLIAM KARN, L.S. 2961

LOT SPLIT MAP
 CITY OF OCEANSIDE

A DIVISION OF A PORTION OF THE NE 1/4 OF SECTION 35, T.10S, R.4W, S.B.M. CITY OF OCEANSIDE, SAN DIEGO COUNTY, CALIFORNIA.

MR. C. R. LINVILLE
 STAR ROUTE, BOX 38-B
 SAN LUIS REY
 SAN DIEGO COUNTY, CALIFORNIA.

APPROVED
 Date: 8-10-1971
 By: *Olton S. Ruler*
 City Engineer