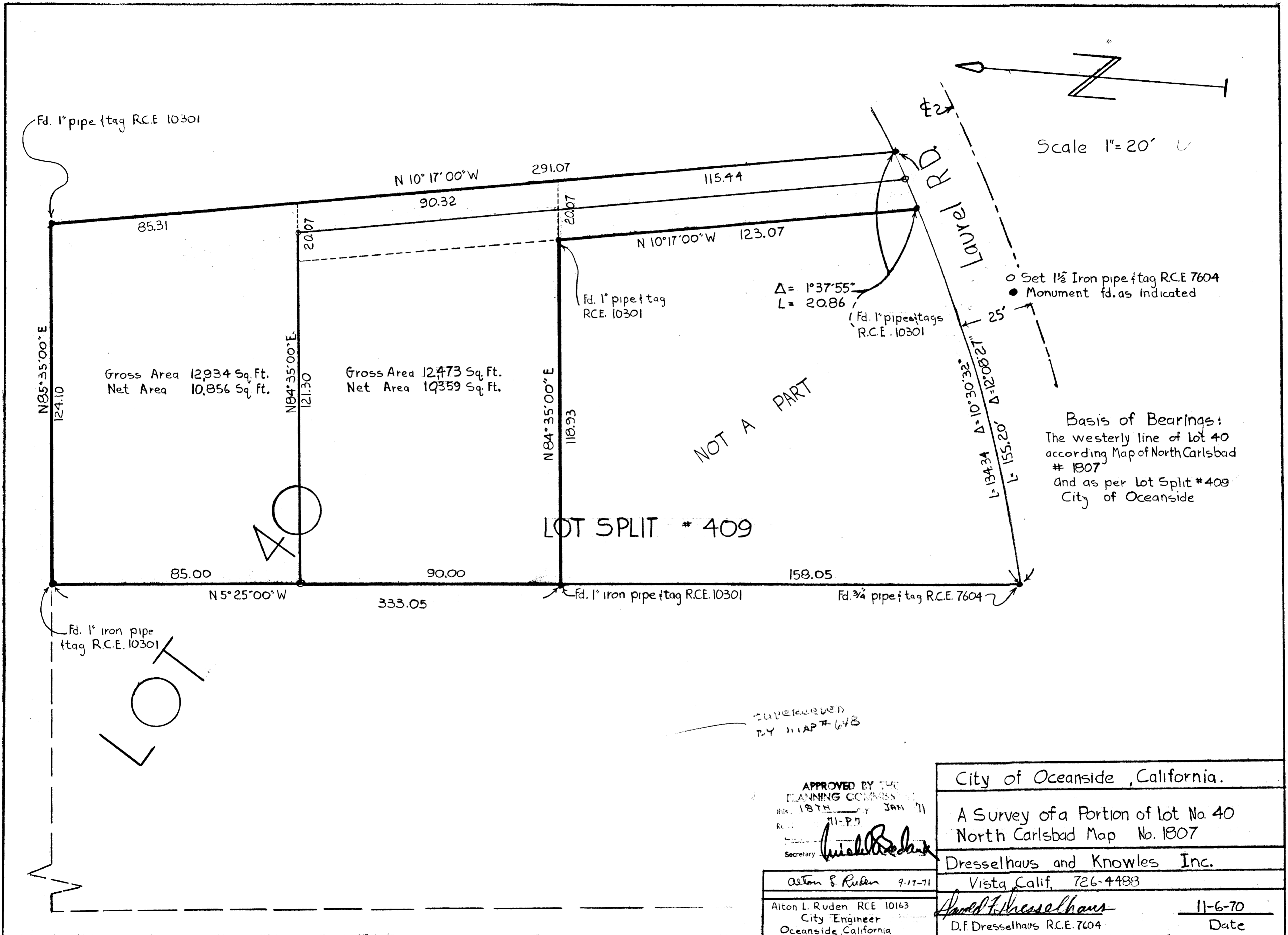


LOT SPLIT # 564



Scale 1" = 20'

○ Set 1 1/2" Iron pipe tag R.C.E. 7604  
● Monument fd. as indicated

Basis of Bearings:  
The westerly line of Lot 40 according Map of North Carlsbad # 1807  
And as per Lot Split #409 City of Oceanside

NOT A PART

LOT SPLIT # 409

SUPERSEDED BY MAP # 648

APPROVED BY THE PLANNING COMMISSION  
this 18th day of JAN 71  
Secretary *Alton L. Ruden*

Alton L. Ruden 9-17-71  
Alton L. Ruden RCE 10163  
City Engineer  
Oceanside, California

City of Oceanside, California.	
A Survey of a Portion of Lot No. 40 North Carlsbad Map No. 1807	
Dresselhaus and Knowles Inc.	
Vista Calif, 726-4488	
<i>D.F. Dresselhaus</i>	11-6-70
D.F. Dresselhaus R.C.E. 7604	Date

11-P-7  
1-18-71  
Owner: E. Hansen & Wynn