

LOT SPLIT MAP NO. 562

LOT SPLIT MAP

Of
A Portion of Lot 39 of Butler Groves Gleichner
Addition to Oceanside. In the City of Oceanside
per Map No. 341 filed in the office of the San Diego
County Recorder.

June, 1971

Block 40

BUTLER GROVES AND (STERLING HOUSING PROJECT)
GLEICHNER ADDITION

Map No. 341

Fd 1/2" I.P. inside
2" I.P. Conc. Core

LEGEND

Indicates points found as noted.
Indicates point set as indicated with brass disc
stamped L.S. 1162

BASIS OF BEARINGS

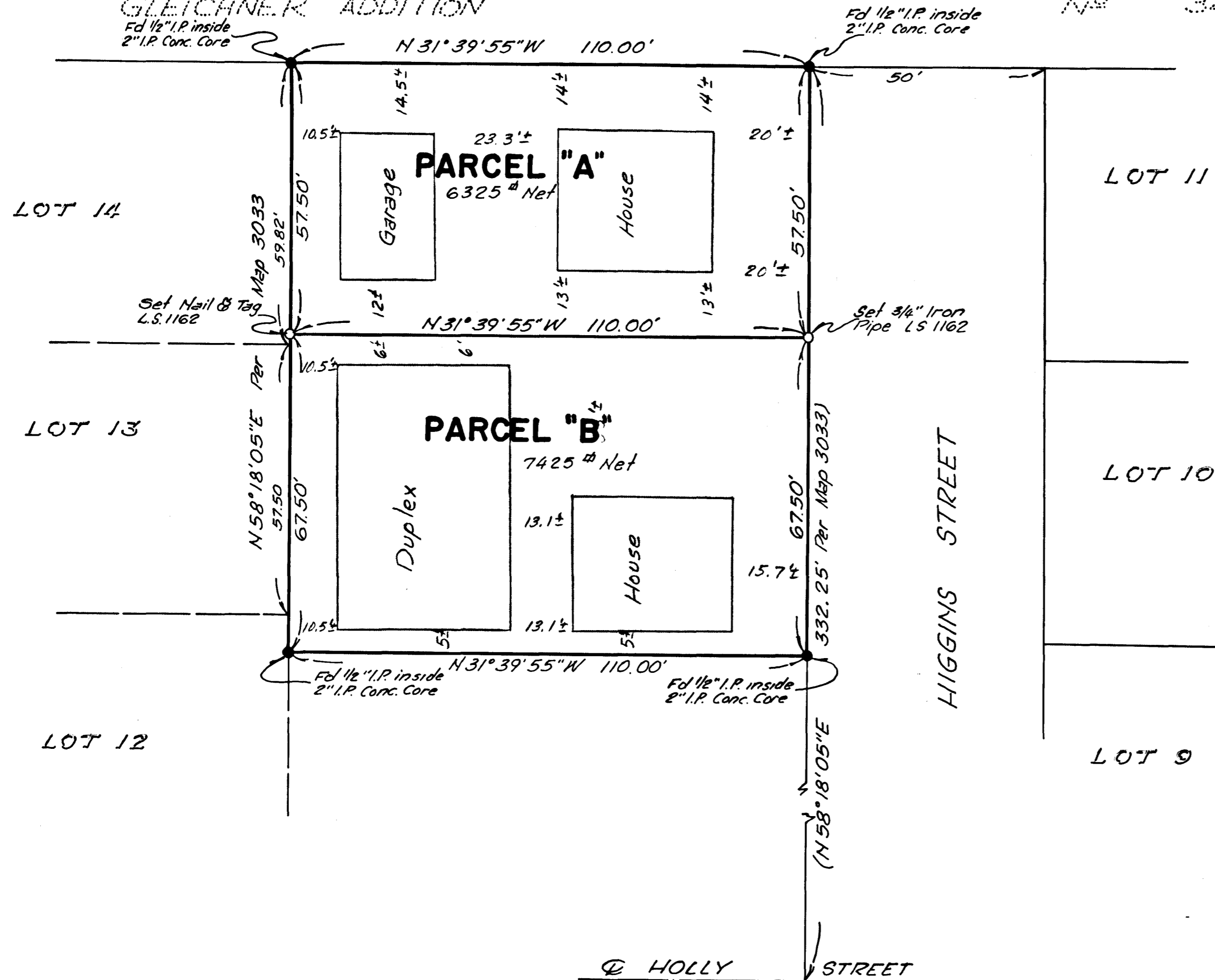
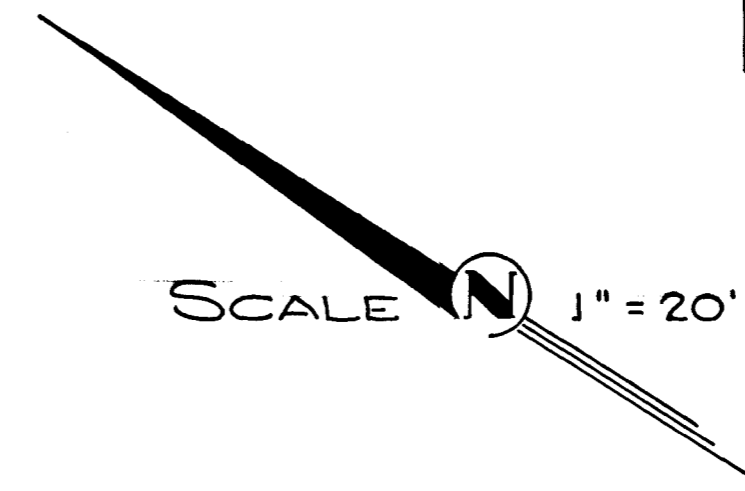
The Basis of Bearings for this survey is the
Southeasterly line of lots 13 & 14 Sterling Plaza per
Map 3033 I.E. N 58° 18' 05" E

SURVEYORS NOTE

This Map correctly represents a survey made
by me or under my direction in conformance
with the requirements of the Land Surveyors Act
at the request of Jose F. Ramos 222 South
Clementine Oceanside Calif 92054 Ph. 722-5571

M.P. Browne
M.P. Browne L.S. 1162

APPROVED
Date July 1, 1971
By *Altan & Rubin*
City Engineer



REESE'S ADDITION