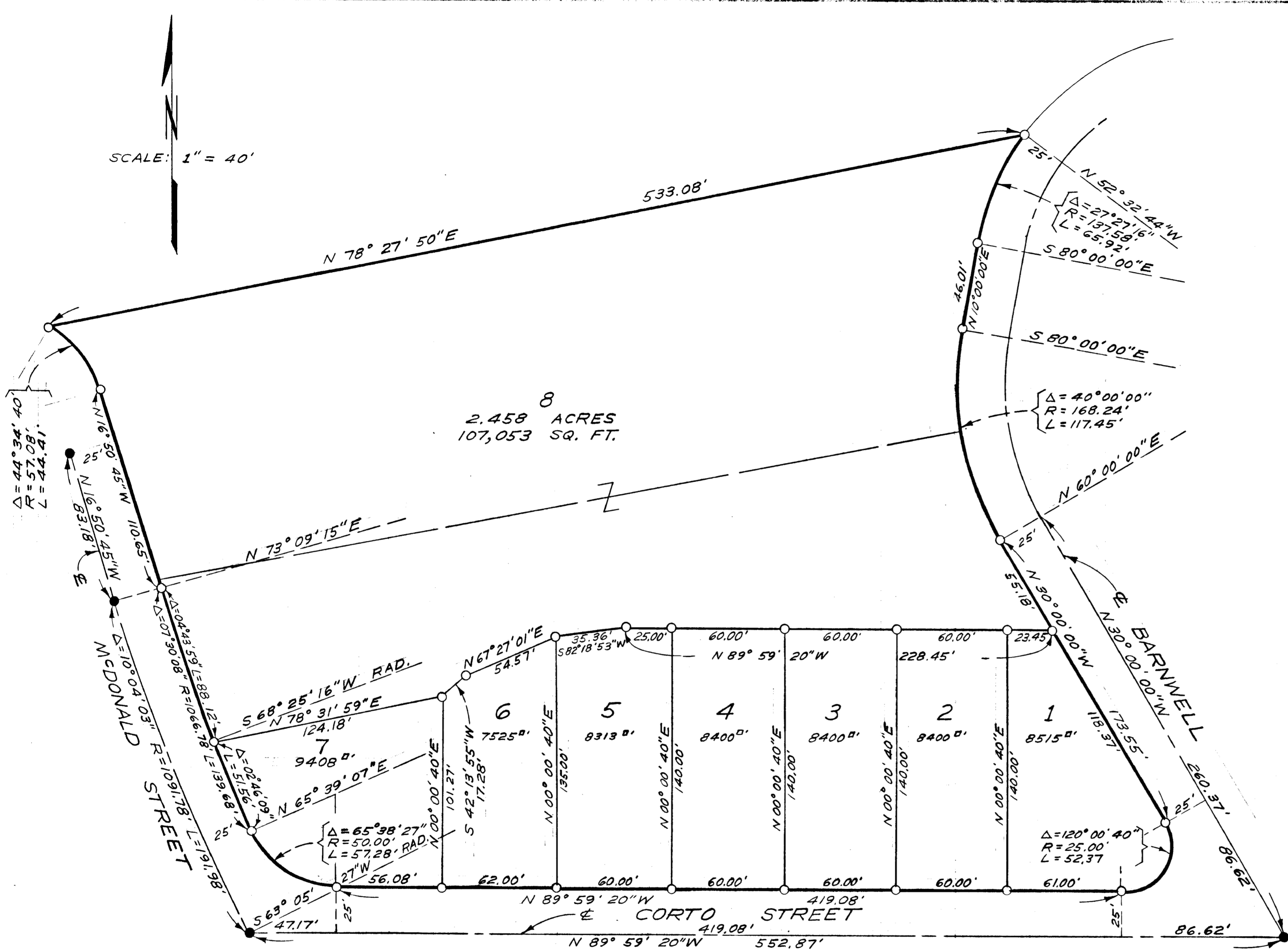


LOT SPLIT MAP No 560

SCALE: 1" = 40'



LEGAL DESCRIPTION:

A PORTION OF THE N.W. 1/4 OF THE S.W. 1/4 OF SEC. 19, T. 11 S., R. 4 W., S.B.B. & M. AND A PORTION OF THE N.E. 1/4 OF S.E. 1/4 OF SEC. 24, T. 11 S., R. 5 W., S.B.B. & M. IN THE CITY OF OCEANSIDE, COUNTY OF SAN DIEGO, STATE OF CALIFORNIA

LEGEND:

- SET 1" PIPE TAGGED L.S. 3802
- FOUND SPIKE IN PAVING PER CITY RECORDS OR AS SHOWN

BASIS OF BEARINGS:

THE CENTERLINE OF CORTO STREET PER DEED

LOT SPLIT MAP

FOR

WARD DOBBINS

OCEANSIDE, CALIFORNIA

APPROVED:
Alton S. Ruden
 ALTON L. RUDEN, R.C.E. 10,163
 CITY ENGINEER
 DATE: 6-9-1971
 OCEANSIDE, CALIFORNIA

DESIGNED: E. BRIAN SMITH ENGINEERS
 H.L.T.
 DRAWN: 2656 STATE STREET
 HP CARLSBAD, CALIFORNIA
 CHECKED: *[Signature]*
 E.B.S.
 APPROVED: *[Signature]*
 HARRY L. TRUAX, L.S. 3802

DATE: 2-10-71
 SCALE: 1" = 40'
 SHEET: 1 OF 1