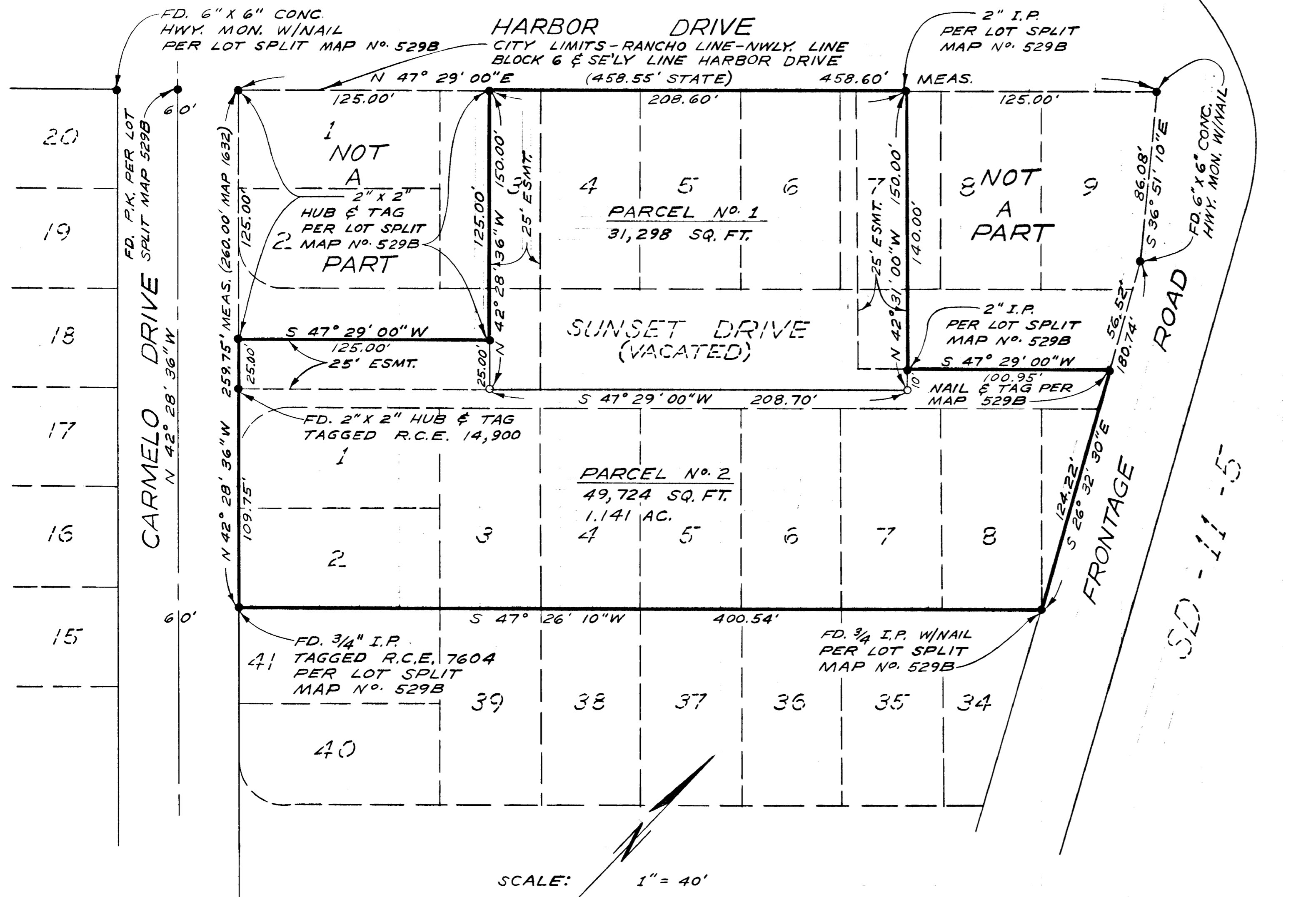


LOT SPLIT MAP N^o. 556

RANCHO SANTA MARGARITA Y LOS FLORES
BOOK 7 PAGE 39 OF PATENTS



LEGAL DESCRIPTION:

A PORTION OF MAP OF NORTH OCEANSIDE MAP N^o. 1632, FILED MARCH 26, 1914, IN THE OFFICE OF THE COUNTY RECORDER OF SAN DIEGO COUNTY CALIFORNIA IN THE CITY OF OCEANSIDE, COUNTY OF SAN DIEGO, STATE OF CALIFORNIA

LEGEND:

- FOUND AS SHOWN
- SET 1" PIPE TAGGED L.S. 3802

BASIS OF BEARINGS:

THE SOUTHEASTERLY LINE OF HARBOR DRIVE PER STATE OF CALIFORNIA DIV. OF HWYS. RIGHT OF WAY MAP N^o. L.O. 9676, I.E. N 47° 29' 00"E

NOTES:

1. MONUMENTATION DEFERRED UNTIL AFTER HOLM TAIT & ASSOC. SET MONUMENTS SHOWN ON LOT SPLIT 529B.
2. THIS LOT SPLIT ACCEPTS LOT SPLIT 529B AS BASIS FOR THIS SURVEY.

SCALE: 1" = 40'

REVISION	EASEMENT WIDTH	PARCEL #1	7-16-71	H.L.T.
LOT SPLIT MAP				
FOR				
HAROLD F. CARPENTER				
OCEANSIDE, CALIFORNIA				
DESIGNED:	E. BRIAN SMITH ENGINEERS			DATE:
DRAWN:	2656 STATE STREET			4-27-71
CHECKED:	CARLSBAD, CALIFORNIA			SCALE:
APPROVED:	HARRY L. TRUAX, L.S. 3802			1" = 40'
H.L.T.				SHEET:
				1 OF 1

REVISION APPROVED OLR 8-3-71
 APPROVED:
Alton Ruden
 ALTON L. RUDEN, R.C.E. 10,163
 CITY ENGINEER
 DATE: May 13 1971
 OCEANSIDE, CALIFORNIA