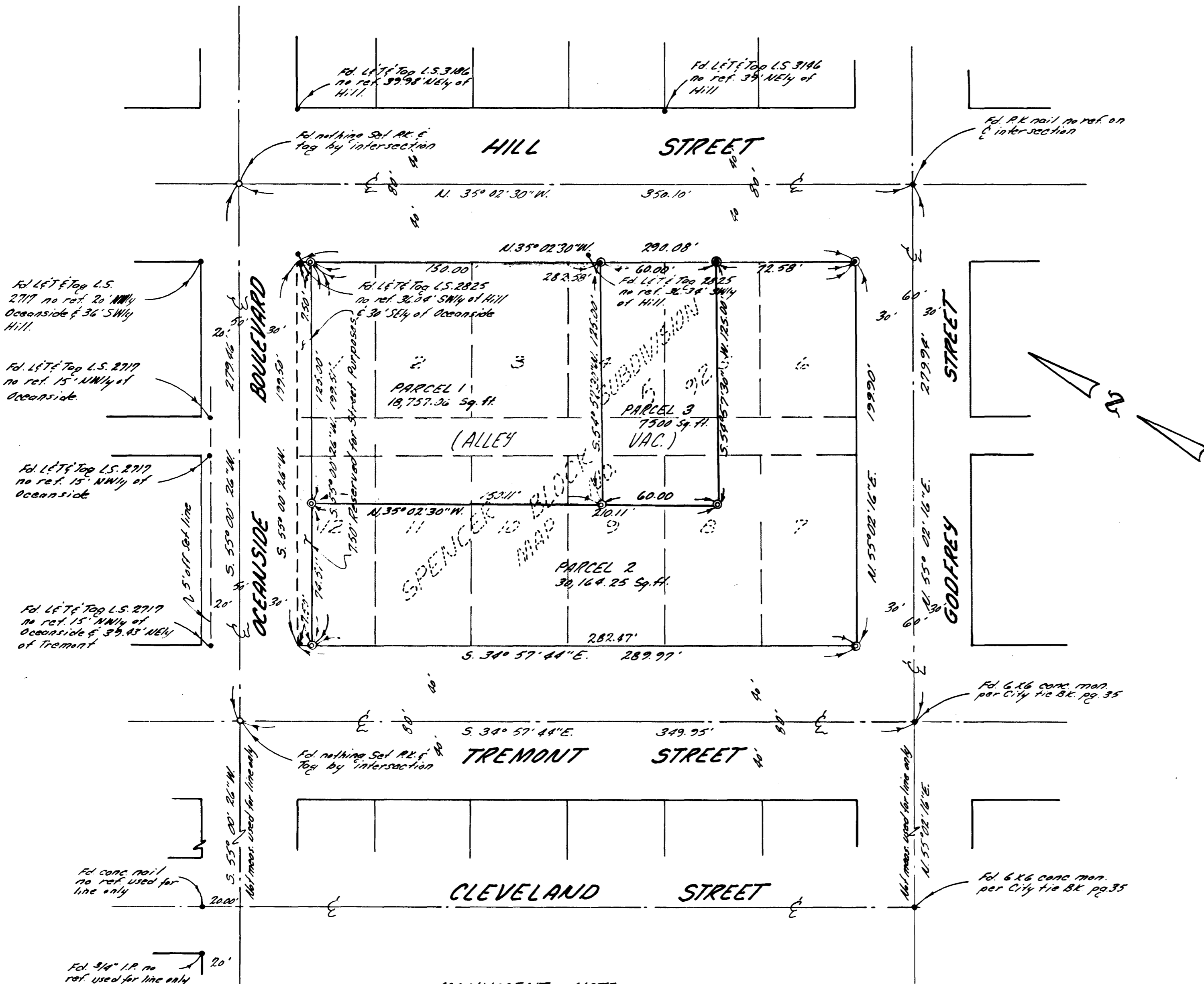


# LOT SPLIT MAP NO. 551

LEGAL DESCRIPTION  
 Being a division of Block 5 of Spencers  
 Subdivision, City of Oceanside, County of San  
 Diego, State of California, according to Map  
 thereof No. 92, filed in the office of the County  
 recorder for said county.

BASIS OF BEARINGS:  
 The bearing of  $N. 35^{\circ} 02' 30'' W.$  on the centerline  
 of Hill Street was used as the basis of all  
 bearings shown hereon, as said bearing is  
 shown on a Non-Recorded Record of Survey  
 on file with the City Engineer.



MONUMENT NOTE

- ⊙ Indicates set 2" I.P. w/comb. top R.C.E. 14705 & R.C.E. 14900.
- Indicates set mon. as noted.
- Indicates found mon. as noted.
- ⊙ Indicates set LET w/comb. top R.C.E. 14705 & R.C.E. 14900.

Revised to reflect a 3 parcel lot split at the request of Lloyd Dindinger 6-15-71.

LOT SPLIT MAP		
FOR		
LLOYD DINDINGER		
OCEANSIDE CALIFORNIA		
APPROVED	DRAWN H.T.M.	DATE 6-24-71
ALTON L. RUBEN R.C.E. 10163 CITY ENGINEER	CHECKED	SCALE 1" = 40'
DATE:	APPROVED	SHEET
OCEANSIDE CALIFORNIA	<i>Kenneth E. Tait</i> KENNETH E. TAIT RCE 14900	1 OF 1