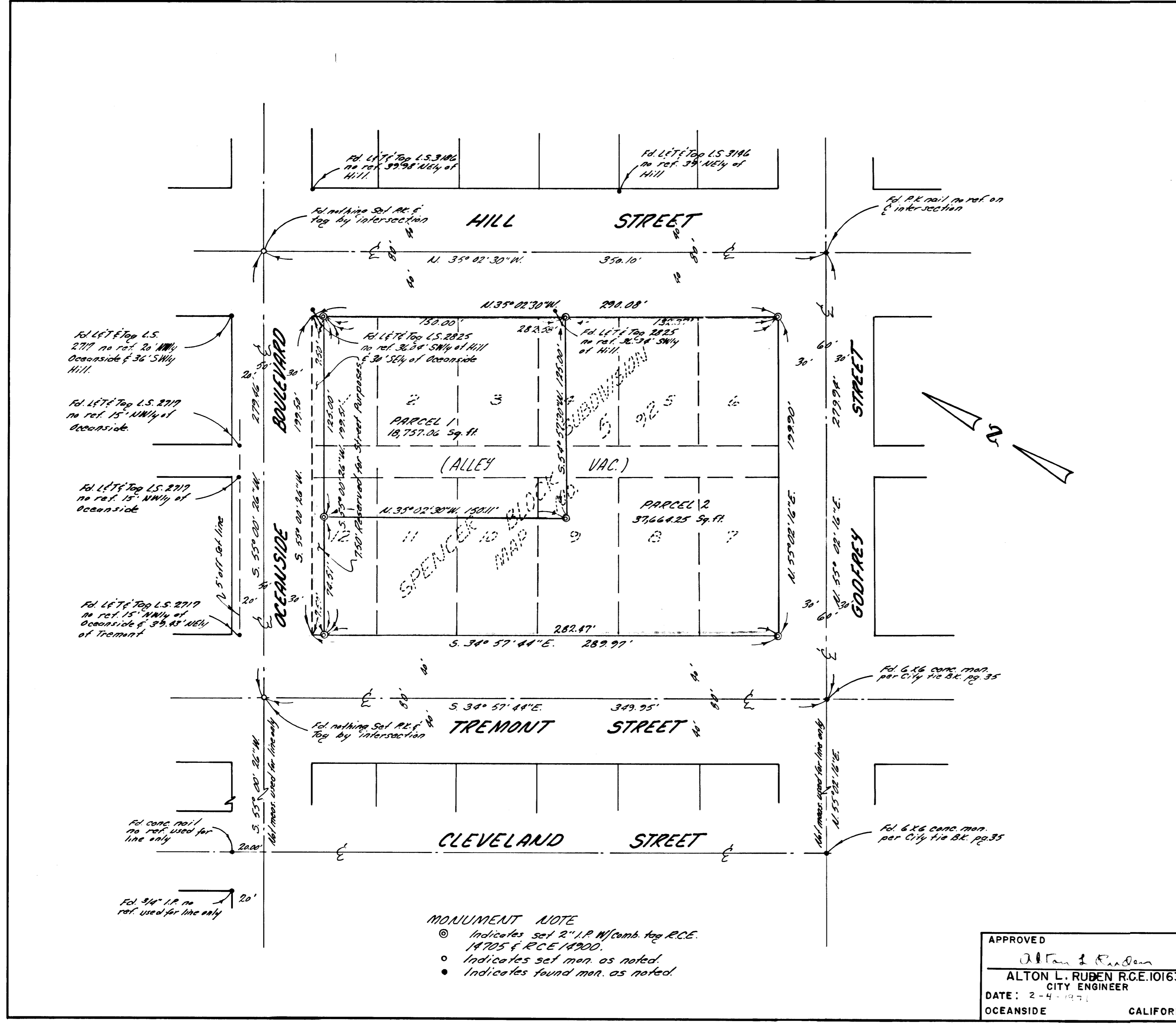


# LOT SPLIT MAP NO. 551

LEGAL DESCRIPTION  
 Being a division of Block 5 of Spencers Subdivision, City of Oceanside, County of San Diego, State of California, according to Map thereof No. 92, filed in the office of the County recorder for said county.

BASIS OF BEARINGS:  
 The bearing of  $N. 35^{\circ} 02' 30'' W.$  on the centerline of Hill Street was used as the basis of all bearings shown hereon, as said bearing is shown on a Non-Recorded Record of Survey on file with the City Engineer.



MONUMENT NOTE  
 ● Indicates set 2" I.P. w/comb. tag R.C.E. 1A705 & R.C.E. 1A900.  
 ○ Indicates set mon. as noted.  
 ● Indicates found mon. as noted.

LOT SPLIT MAP		
FOR		
LLOYD DINDINGER		
OCEANSIDE CALIFORNIA		
APPROVED	DRAWN	DATE
<i>Alton L. Ruben</i>	H.O.M.	2-28-70
ALTON L. RUBEN R.C.E. 10163	CHECKED	SCALE
CITY ENGINEER		1" = 40'
DATE: 2-4-1970	APPROVED	SHEET
OCEANSIDE CALIFORNIA	<i>Kenneth E. Tait</i>	1 OF 1
	KENNETH E. TAIT RCE 14900	