

LOT SPLIT MAP No. 549

A division of a portion of the N.E. 1/4  
of the S.E. 1/4 of Section 24 - T. 115, R. 5W.  
S.B.B. & M.  
City of Oceanside  
San Diego County, California

Scale - 1" = 40'

The basis of bearings for this  
survey is the Westerly line of  
Hoover Street per R.O.F.S. 5114  
Viz - N15°26'30"E

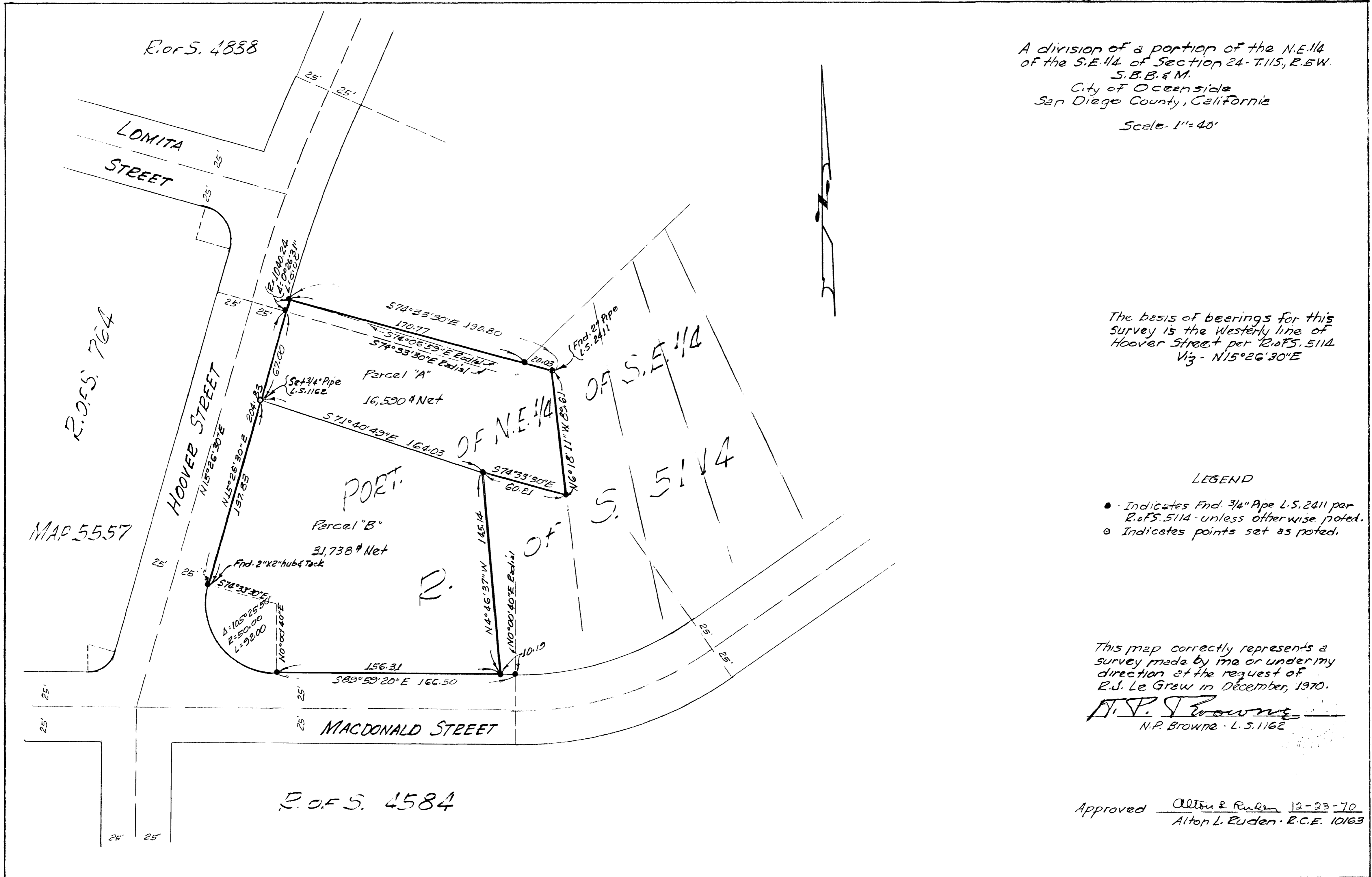
LEGEND

- Indicates Fnd. 3/4" Pipe L.S. 2411 per R.O.F.S. 5114 - unless otherwise noted.
- Indicates points set as noted.

This map correctly represents a  
survey made by me or under my  
direction at the request of  
R.J. Le Graw in December, 1970.

N.P. Browne  
N.P. Browne - L.S. 1162

Approved Alton L. Ruden 12-23-70  
Alton L. Ruden - R.C.E. 10163



R.O.F.S. 4888

LOMITA STREET

R.O.S.S. 764

MAP 5557

HOOVER STREET

PORT.

Parcel "B"  
31,738 # Net

MACDONALD STREET

R.O.F.S. 4584

Parcel "A"  
16,590 # Net

OF N.E. 1/4 OF S.E. 1/4 OF S. 5114