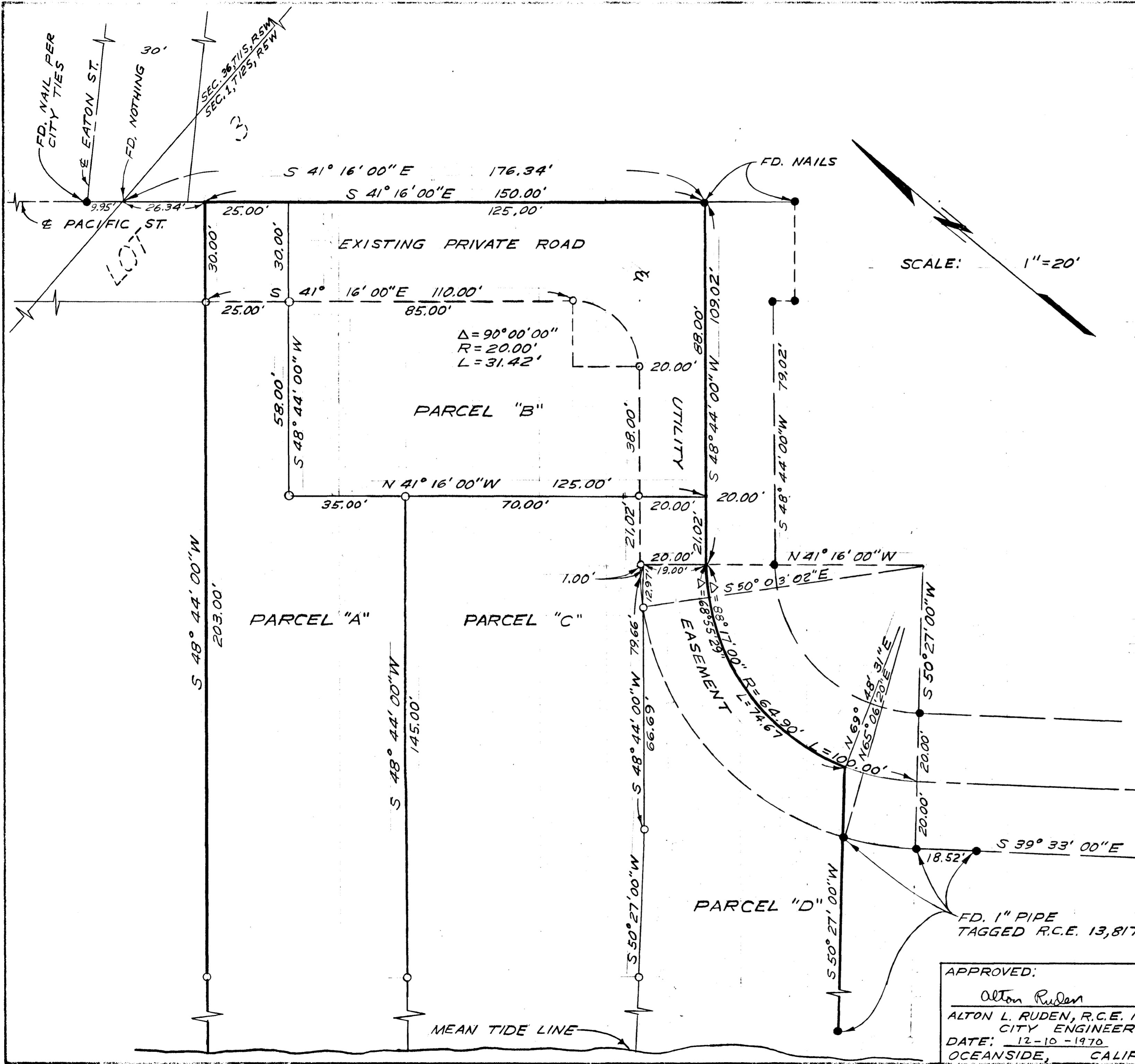


LOT SPLIT MAP No. 547

LEGAL DESCRIPTION:
 A PORTION OF LOT 3, SECTION 1, T 12 S,
 R 5 W, S.B.B. & M., CITY OF OCEANSIDE,
 COUNTY OF SAN DIEGO, STATE OF CALIFORNIA



SCALE: 1" = 20'

- LEGEND:**
- FOUND 1" PIPE TAGGED L.S. 1162 OR AS SHOWN
 - SET 1" PIPE TAGGED R.C.E. 13,817

BASIS OF BEARINGS:
 THE NORTHEASTERLY LINE PER DEED
 I.E. S 41° 16' 00" E

APPROVED BY THE
 PLANNING COMMISSION
 this 16TH day of Nov. 1970
 Resolution No. 70-P78
 Secretary *Michelle Salas*

LOT SPLIT MAP		
FOR MRS. NANCY TENAGLIA		
OCEANSIDE, CALIFORNIA		
DESIGNED	E. BRIAN SMITH ENGINEERS	DATE: 10-7-70
H.L.T.	2656 STATE STREET	SCALE: 1" = 20'
DRAWN	CARLSBAD, CALIFORNIA	SHEET: 1 OF 1
CHECKED	<i>E. Brian Smith</i>	
APPROVED	E. BRIAN SMITH, R.C.E. 13,817	
E.B.S.		

APPROVED:
Alton Ruden
 ALTON L. RUDEN, R.C.E. 10,163
 CITY ENGINEER
 DATE: 12-10-1970
 OCEANSIDE, CALIFORNIA