

# SPLIT LOT MAP # 540

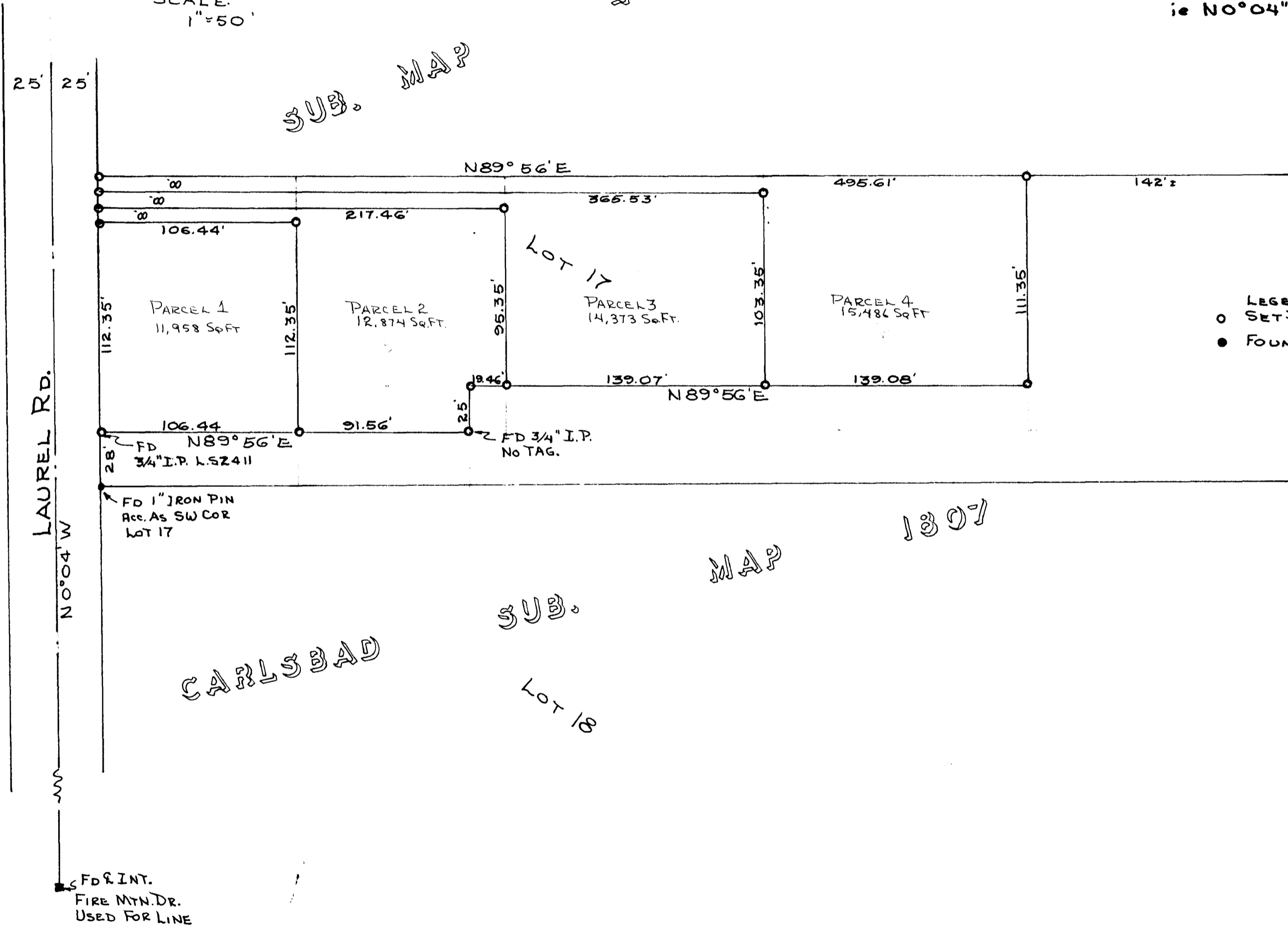
LOT 17  
NORTH CARLSBAD SUB  
MAP NO 1807

THE BASIS OF BEARINGS  
OF THIS MAP IS THE  
E OF LAUREL ROAD  
AS SHOWN ON NORTH CARLSBAD  
SUB. MAP # 1807  
ie N0°04" W

SCALE:  
1" = 50'

4972

SUB. MAP



LEGEND  
○ SET 3/4" IRON PIPE (TAG L.S. 3380)  
● FOUND AS NOTED

NORTH

CARLSBAD

SUB.

Lot 18

MAP

1807

CITY OF OCEANSIDE

SURVEY OF A PORTION OF  
LOT 17 NORTH CARLSBAD

REQUESTED BY -- O.A. OSUNA

APPROVED BY THE  
PLANNING COMMISSION  
this 2ND day of SEPT. 1970  
Resolution No 62-P-70  
Secretary *R. Bailey*

APPROVED  
Sept. 21, 1970  
By: *Alton Ruden*  
City Engineer

*Neal M. Wessel*  
NEAL M. WESSEL  
L.S. 3380

Aug. 1970  
DATE