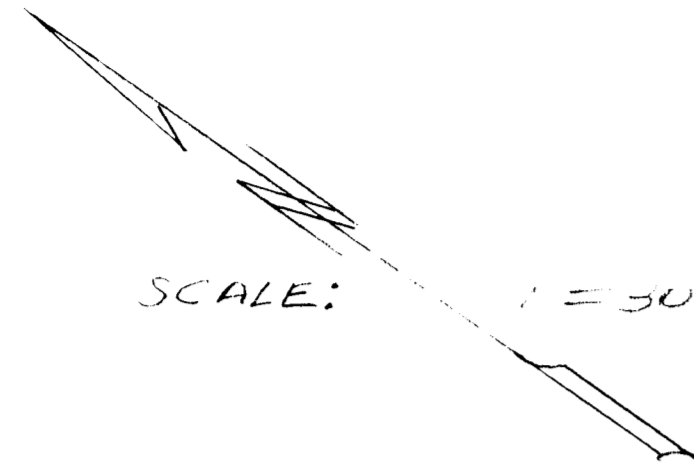


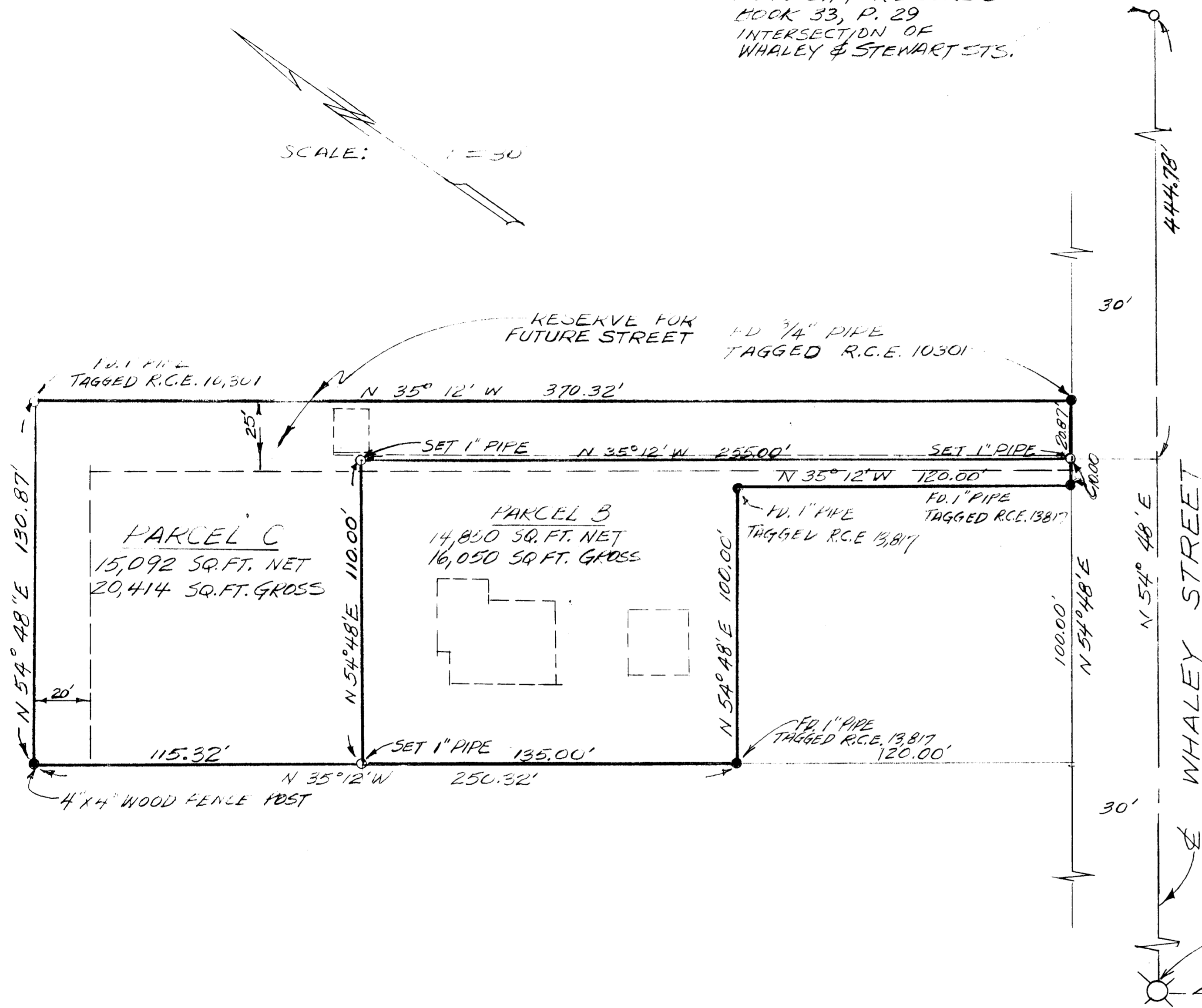
# LOT SPLIT MAP NO 537

CONC. MONUMENT  
PER CITY RECORDS  
BOOK 33, P. 29  
INTERSECTION OF  
WHALEY & STEWART STS.



LEGAL DESCRIPTION  
PORTION OF BLOCK 53 SOUTH  
OCEANSIDE MAP 622 IN THE CITY  
OF OCEANSIDE, COUNTY OF SAN DIEGO,  
STATE OF CALIFORNIA

LEGEND  
● FOUND AS SHOWN  
○ SET 1" I.D. PIPE



BASIS OF BEARINGS:  
THE CENTERLINE OF WHALEY  
STREET PER MAP 622  
I. E. N 54° 48' 00" E

LOT SPLIT MAP  
FOR  
**GERALD M. JUNTTI**  
1010 WHALEY ST. OCEANSIDE, CALIFORNIA

APPROVED BY THE  
PLANNING COMMISSION  
this 6TH day of JULY, 1970  
Resolution No. 70-P44  
Secretary [Signature]

APPROVED:  
Alton Ruden  
ALTON L. RUDEN, R.C.E. 10,163  
CITY ENGINEER  
DATE: July 17, 1970  
OCEANSIDE, CALIFORNIA

PREPARED BY M.C. OLSON  
1836 AVENIDA ESTUDIANTE  
SAN PEDRO, CALIFORNIA  
Maurice C. Olson  
MAURICE C. OLSON, R.C.E. 10,636

DATE  
6-29-70  
SCALE  
1" = 30'  
SHEET  
1 OF 1