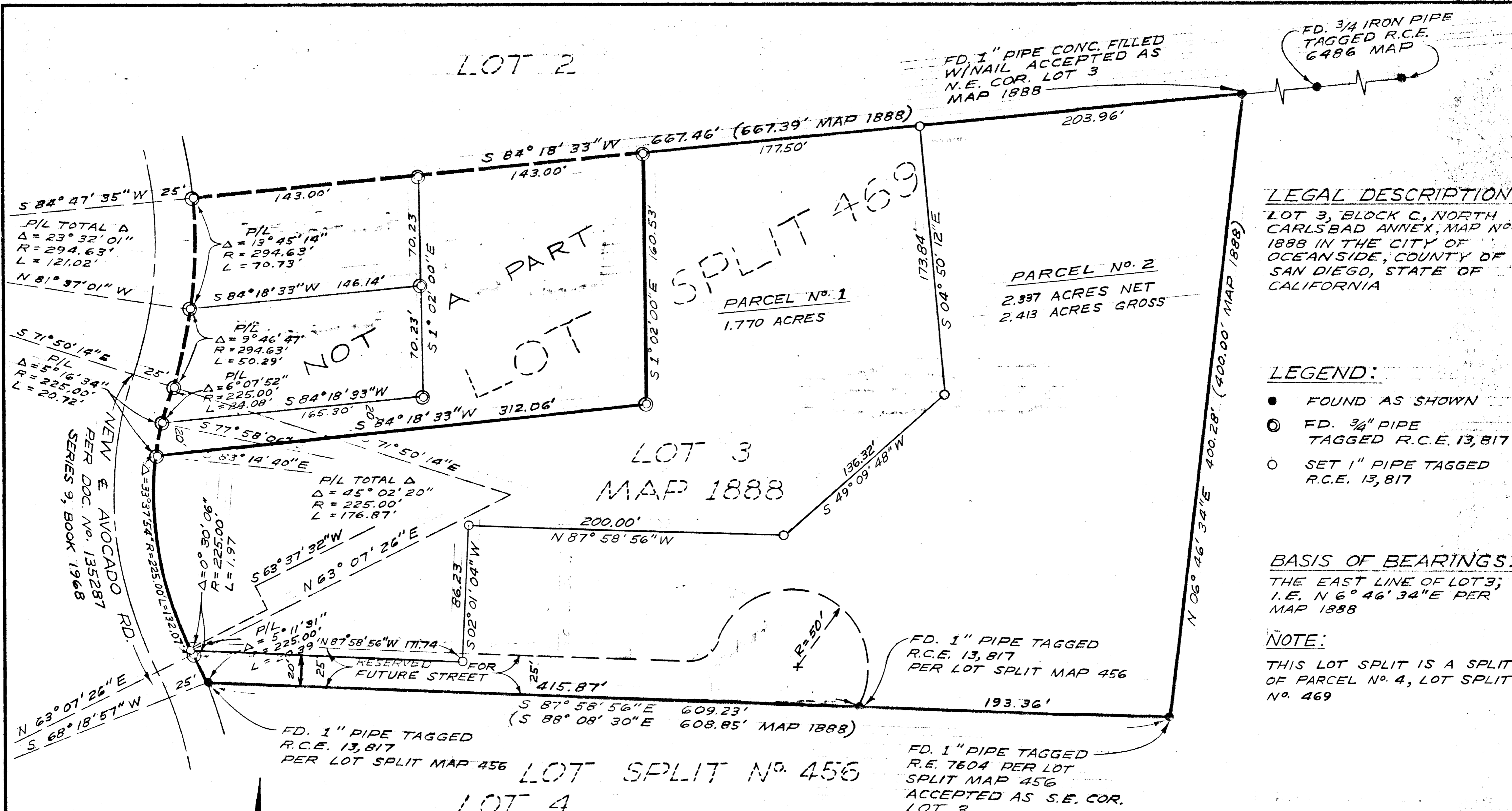


LOT SPLIT MAP NO. 536

LOT 2



LEGAL DESCRIPTION:
 LOT 3, BLOCK C, NORTH CARLSBAD ANNEX, MAP NO. 1888 IN THE CITY OF OCEANSIDE, COUNTY OF SAN DIEGO, STATE OF CALIFORNIA

- LEGEND:**
- FOUND AS SHOWN
 - FD. 3/4" PIPE TAGGED R.C.E. 13,817
 - SET 1" PIPE TAGGED R.C.E. 13,817

BASIS OF BEARINGS:
 THE EAST LINE OF LOT 3; I.E. N 6° 46' 34" E PER MAP 1888

NOTE:
 THIS LOT SPLIT IS A SPLIT OF PARCEL NO. 4, LOT SPLIT NO. 469

SCALE: 1" = 40'

APPROVED BY THE PLANNING COMMISSION
 this 15th day of MAY 1970
 Resolution No. 70P-36
 Secretary *[Signature]*

APPROVED:
[Signature]
 ALTON L. RUDEN, R.C.E. 10,163
 CITY ENGINEER
 DATE: July 7, 1970
 OCEANSIDE, CALIFORNIA

LOT SPLIT MAP	
FOR ROBERT D. GILLIAM	
OCEANSIDE, CALIFORNIA	
DRAWN: #P	E. BRIAN SMITH ENGINEERS
CHECKED: H.L.T.	2656 STATE STREET
APPROVED: <i>[Signature]</i>	CARLSBAD, CALIFORNIA
E.B.S.	E. BRIAN SMITH, R.C.E. 13,817
DATE: 6-5-70	SCALE: 1" = 40'
	SHEET: 1 OF 1