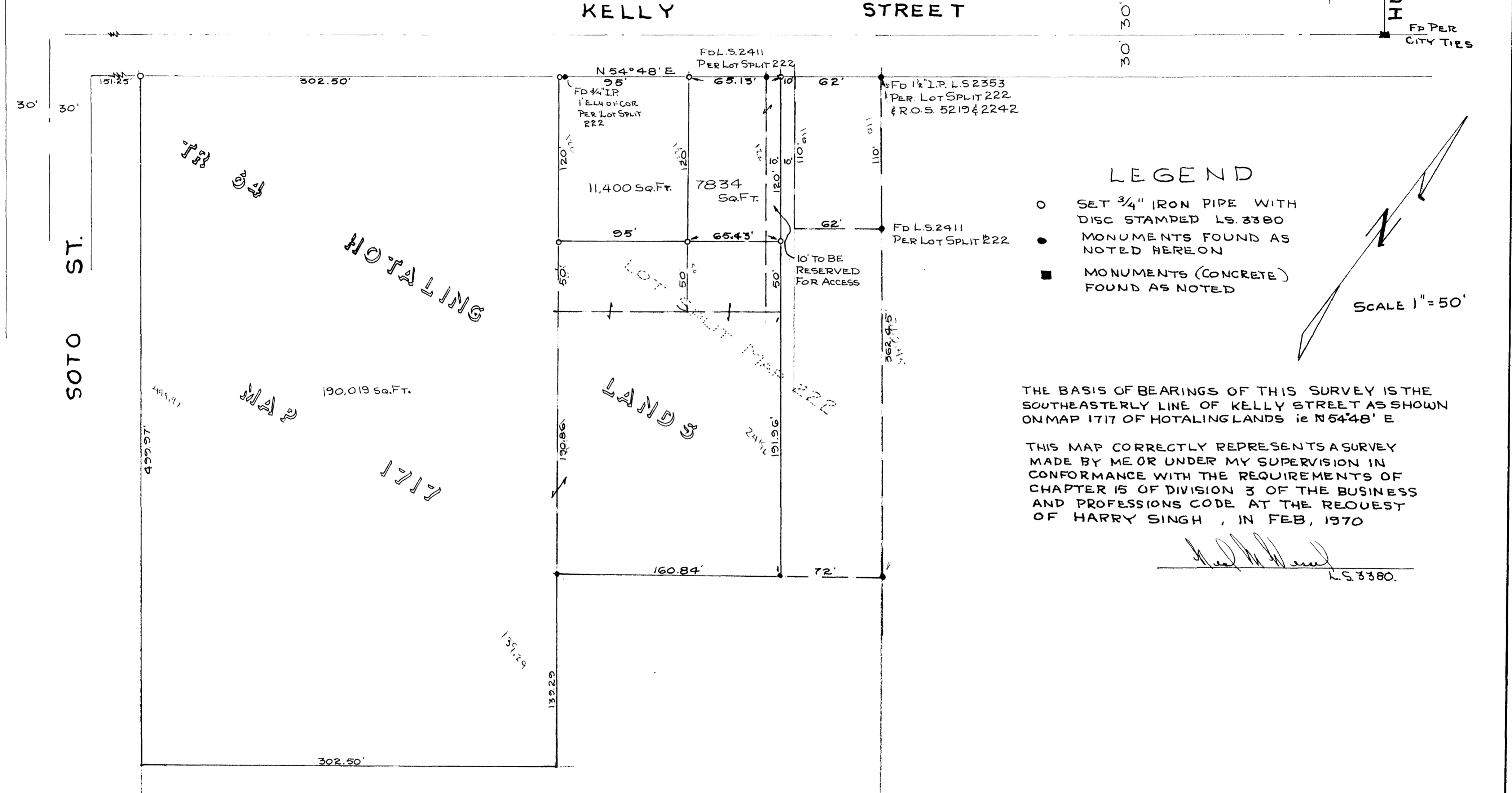
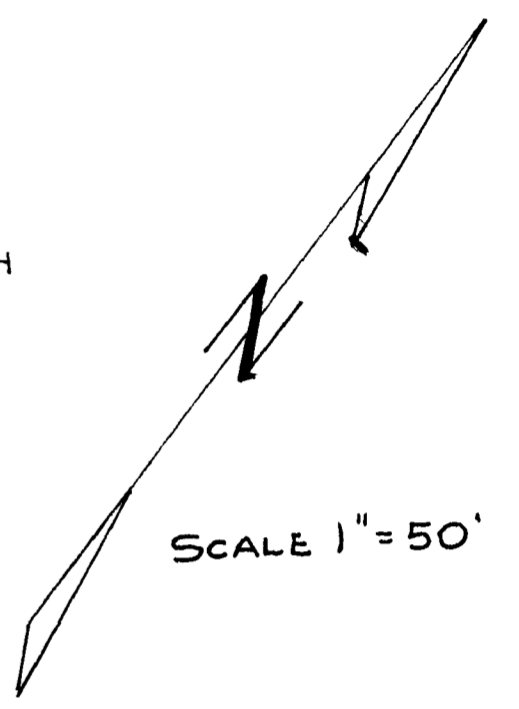


FD ST Hwy Mon
STA 12+46.76
70.54



LEGEND

- SET 3/4" IRON PIPE WITH DISC STAMPED L.S. 3380
- MONUMENTS FOUND AS NOTED HEREON
- MONUMENTS (CONCRETE) FOUND AS NOTED



THE BASIS OF BEARINGS OF THIS SURVEY IS THE SOUTHEASTERLY LINE OF KELLY STREET AS SHOWN ON MAP 1717 OF HOTALING LANDS ie N 54° 48' E

THIS MAP CORRECTLY REPRESENTS A SURVEY MADE BY ME OR UNDER MY SUPERVISION IN CONFORMANCE WITH THE REQUIREMENTS OF CHAPTER 15 OF DIVISION 3 OF THE BUSINESS AND PROFESSIONS CODE AT THE REQUEST OF HARRY SINGH, IN FEB, 1970

Neal M. Wessel
L.S. 3380.

APPROVED Date Feb 5, 1970 By: <i>Allen L. Ruden</i> City Engineer	DRAWN MW	NEAL M. WESSEL LICENSED LAND SURVEYOR <i>Neal M. Wessel</i> L.S. 3380	DATE: FEB. 1970
			SCALE 1" = 50' SHEET 1 OF 1