

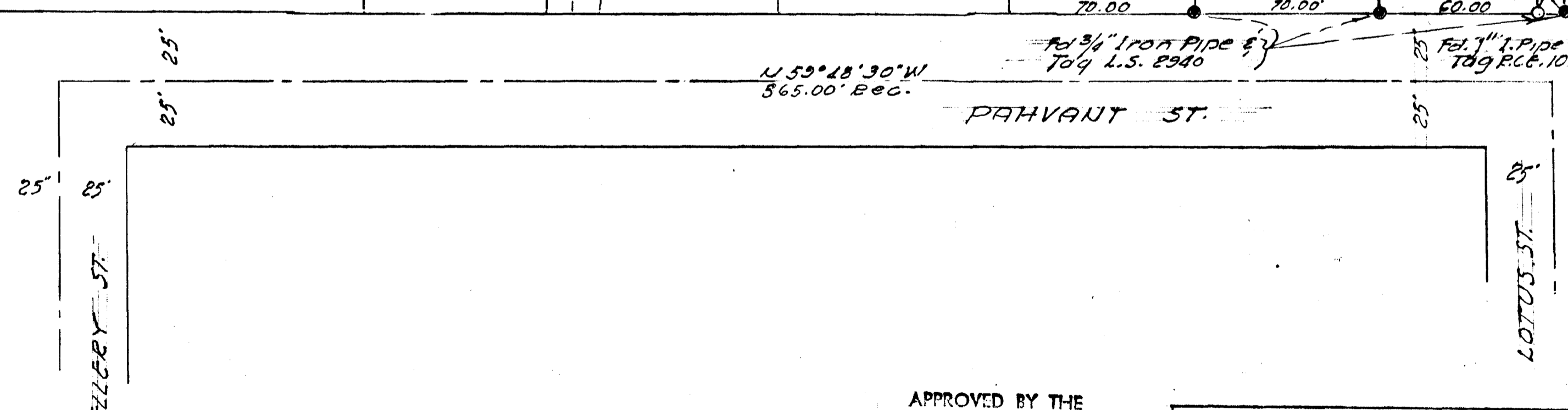
NOTE: - This map correctly represents a survey made by me in conformance with the requirements of the Land Surveyor's Act at the request of Mr. H. W. Ulmer in February 1970. Also Cor. Mon. as indicated will be set as requested by the City Engineer.

Gustav J. Kamptner
GUSTAV J. KAMPTNER L.S. 2789

LEGEND

- 3/4" Iron Pipe Set with Tag L.S. #2789
- Monuments found as indicated.

(Mail & Shiner with Disc R.C.E. 10035)
THE BASIS OF BEARINGS OF THIS SURVEY IS THE S.W. 1/4 LINE OF LOT 9, ELLERY'S ADD. UNIT #1, ACCORDING TO MAP #1834. I.E. N 59° 48' 30" W



CITY OF OCEANSIDE, CALIF.

SURVEY OF PORTION OF LOT 9, ELLERY'S ADD. UNIT #1, ACCORDING TO MAP 1834

REQUESTED BY MR. H.W. ULMER

APPROVED BY THE PLANNING COMMISSION
this 5th day of Jan. 1970
Resolution No. 70-P-1
Secretary *M. D. [Signature]*

APPROVED
Alton & Rubin
ALTON L. BUDEN R.C.E. #10163
3-5-1970
DATE

DRAWN BY *Gustav J. Kamptner*
DAN McBEIDE GUSTAV J. KAMPTNER L.S. 2789
2-25-1970
SCALE 1" = 40'
SHEET 1 OF 1