

LEGAL DESCRIPTION

A PORTION OF MAP OF NORTH OCEANSIDE MAP NO. 1632, FILED MARCH 26, 1941, IN THE OFFICE OF THE COUNTY RECORDER OF SAN DIEGO COUNTY CALIFORNIA IN THE CITY OF OCEANSIDE, COUNTY OF SAN DIEGO, STATE OF CALIFORNIA.

BASIS OF BEARINGS

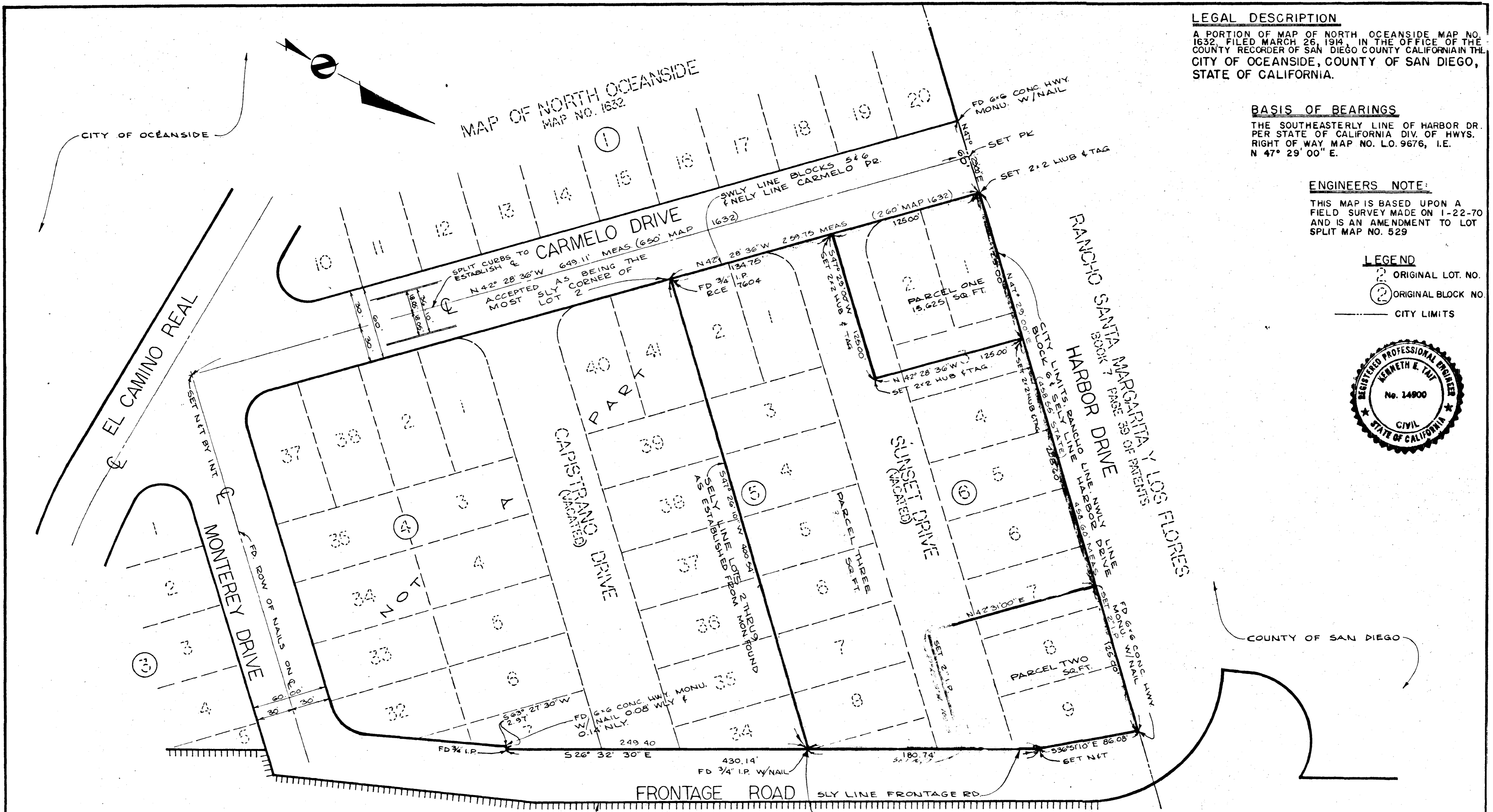
THE SOUTHEASTERLY LINE OF HARBOR DR. PER STATE OF CALIFORNIA DIV. OF HWYS. RIGHT OF WAY MAP NO. L.O. 9676, I.E. N 47° 29' 00" E.

ENGINEERS NOTE:

THIS MAP IS BASED UPON A FIELD SURVEY MADE ON 1-22-70 AND IS AN AMENDMENT TO LOT SPLIT MAP NO. 529

LEGEND

- ① ORIGINAL LOT NO.
- ② ORIGINAL BLOCK NO.
- CITY LIMITS



NO ACCESS PER STATE HWY MAP

ACCEPTED AS BEING THE INTERSECTION OF THE SLY LINE FRONTAGE ROAD W/THE SELY LINE OF LOT 8

INTERSTATE FRWY. RTE. 5
(XI-SD-5)

LOT SPLIT MAP

FOR
HAROLD F. CARPENTER

OCEANSIDE CALIFORNIA

APPROVED
Alton L. Ruben
ALTON L. RUBEN RCE10163
CITY ENGINEER
DATE: _____
OCEANSIDE, CALIF.

DRAWN
T.CULLIGAN
CHECKED
B.C.
APPROVED
K.E.T.
HOLM TAIT & ASSOCIATES
280 NORTH WILSHIRE ANAHEIM, CALIF
(714) 776-9770
Kenneth E. Tait
KENNETH E. TAIT RCE 14900

DATE
2-9-70
SCALE
1" = 50'
SHEET
1 OF 1

JOB NO. MO 243 AMEND.