

LEGAL DESCRIPTION

A PORTION OF MAP OF NORTH OCEANSIDE MAP NO. 1632, FILED MARCH 26, 1914, IN THE OFFICE OF THE COUNTY RECORDER OF SAN DIEGO COUNTY CALIFORNIA IN THE CITY OF OCEANSIDE, COUNTY OF SAN DIEGO, STATE OF CALIFORNIA.

BASIS OF BEARINGS

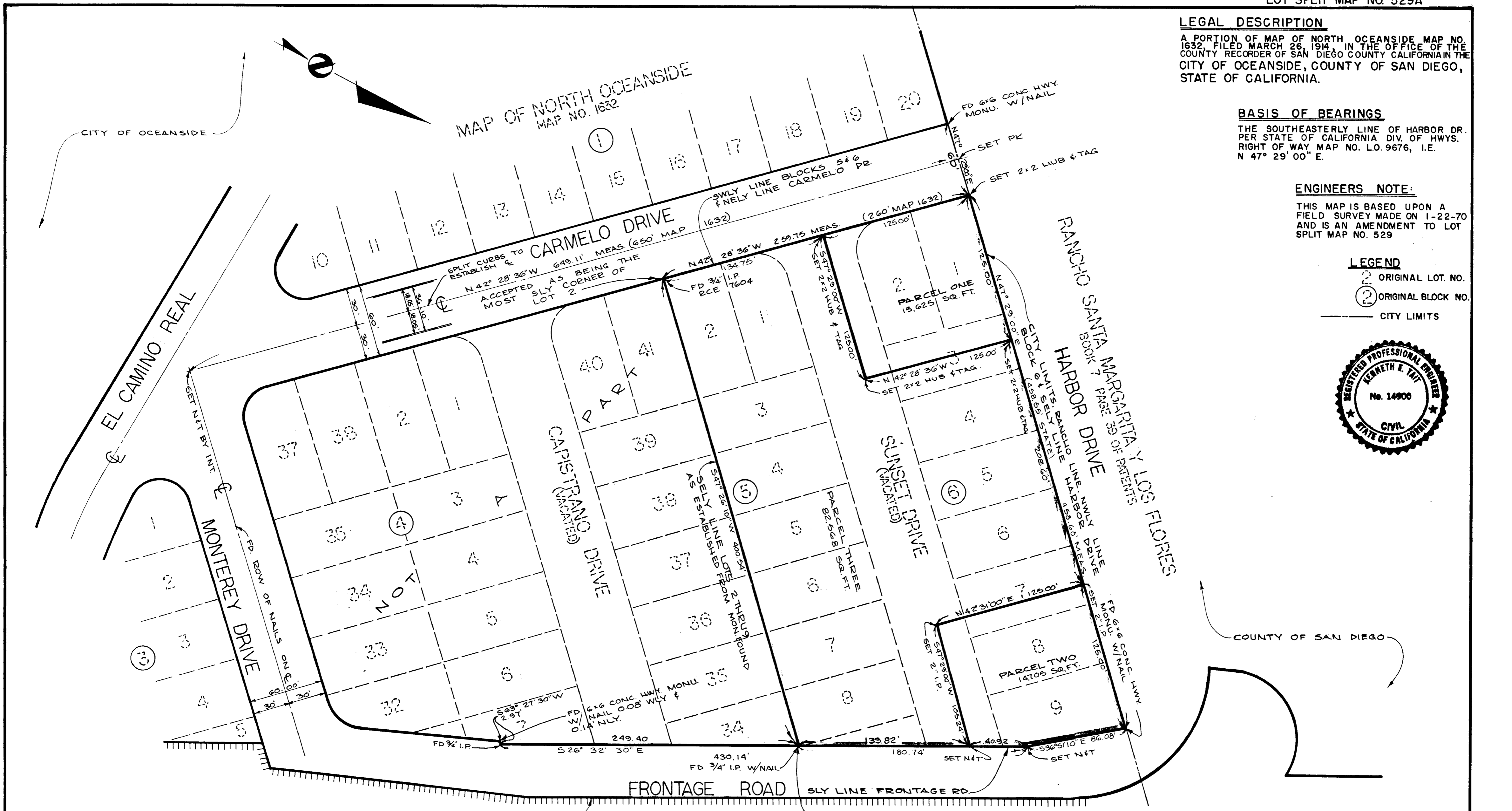
THE SOUTHEASTERLY LINE OF HARBOR DR. PER STATE OF CALIFORNIA DIV. OF HWYS. RIGHT OF WAY MAP NO. L.O. 9676, I.E. N 47° 29' 00" E.

ENGINEERS NOTE:

THIS MAP IS BASED UPON A FIELD SURVEY MADE ON 1-22-70 AND IS AN AMENDMENT TO LOT SPLIT MAP NO. 529

LEGEND

- (1) ORIGINAL LOT NO.
- (2) ORIGINAL BLOCK NO.
- CITY LIMITS



LOT SPLIT MAP

FOR
HAROLD F. CARPENTER

OCEANSIDE CALIFORNIA

INTERSTATE FRWY. RTE. 5
(XI-SD-5)

SEE #529B

JOB NO. MO 243 AMEND

APPROVED <i>Alton L. Ruben</i> ALTON L. RUBEN RCE10163 CITY ENGINEER	DRAWN TCULLIGAL	HOLM TAIT & ASSOCIATES 280 NORTH WILSHIRE ANAHEIM, CALIF (714) 776-9770	DATE 2-9-70
DATE: OCEANSIDE, CALIF	CHECKED B.C.	<i>Kenneth E. Tait</i> KENNETH E. TAIT RCE 14900	SCALE 1" = 50'
	APPROVED K.E.T.		SHEET 1 OF 1