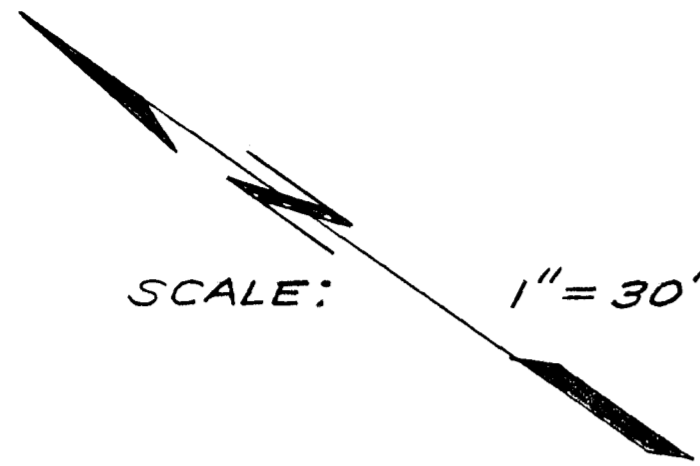


LOT SPLIT MAP NO. 527



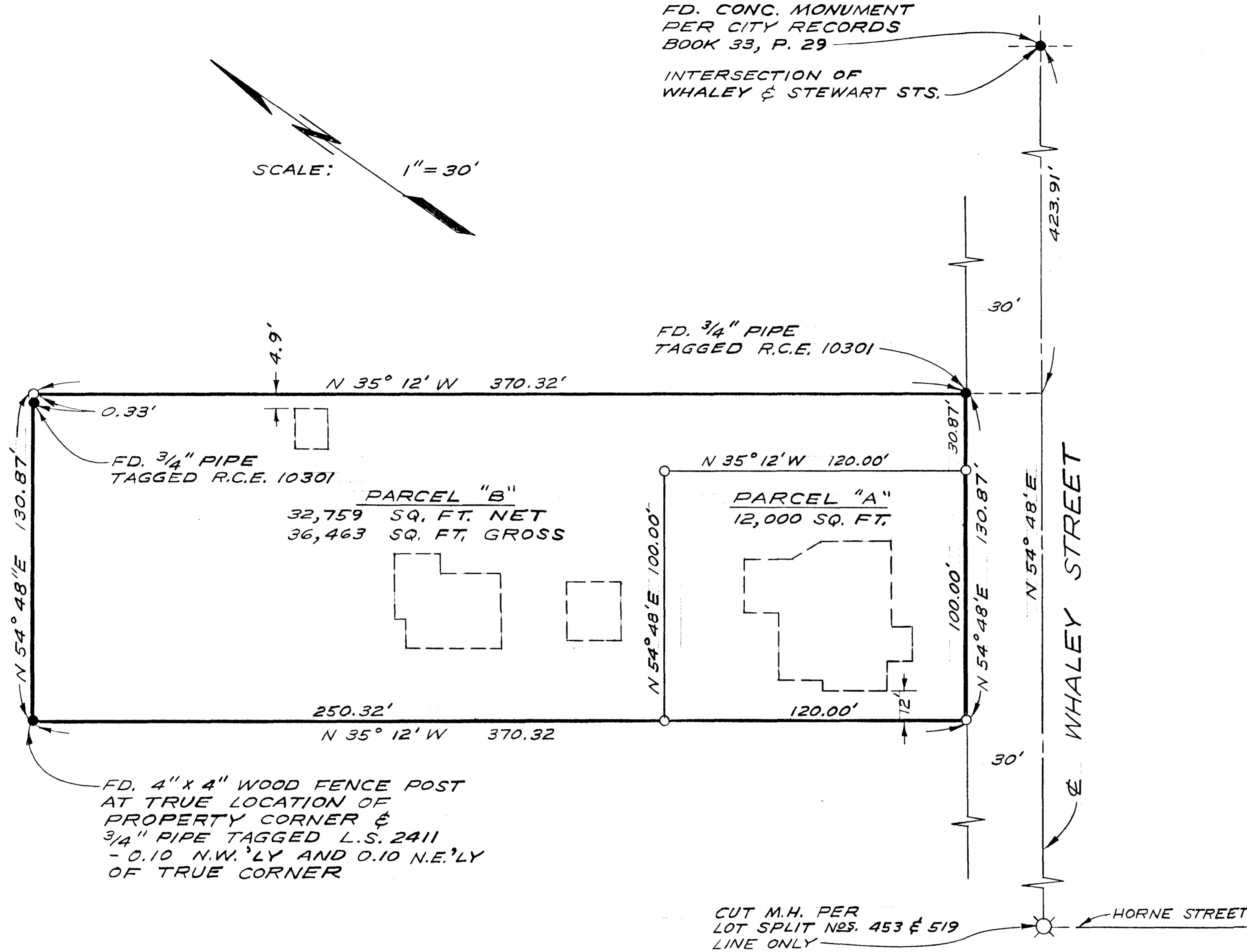
FD. CONC. MONUMENT
PER CITY RECORDS
BOOK 33, P. 29

INTERSECTION OF
WHALEY & STEWART STS.

LEGAL DESCRIPTION:
PORTION OF BLOCK 53 SOUTH
OCEANSIDE MAP 622 IN THE CITY
OF OCEANSIDE, COUNTY OF SAN DIEGO,
STATE OF CALIFORNIA

LEGEND:
● FOUND AS SHOWN
○ SET 1" I.D. PIPE TAGGED
R.C.E. 13,817

BASIS OF BEARINGS:
THE CENTERLINE OF WHALEY
STREET PER MAP 622
I.E. N 54° 48' 00" E



LOT SPLIT MAP		
FOR		
DOROTHY E. LUNKES		
OCEANSIDE,		CALIFORNIA
DRAWN: E. BRIAN SMITH ENGINEERS HP 528 SOUTH HILL STREET	CHECKED OCEANSIDE, CALIFORNIA	DATE: 4-28-69
H.L.T.	APPROVED: <i>E. Brian Smith</i>	SCALE: 1" = 30'
E.B.S. E. BRIAN SMITH, R.C.E. 13,817		SHEET: 1 OF 1

APPROVED BY THE
PLANNING COMMISSION
this 8th day of April, 1969
Resolution No. 671P 33
Secretary *H.M. Berlin*

APPROVED:
Alton S. Ruden
ALTON L. RUDEN, R.C.E. 10,163
CITY ENGINEER
DATE: 3-23-1970
OCEANSIDE, CALIFORNIA