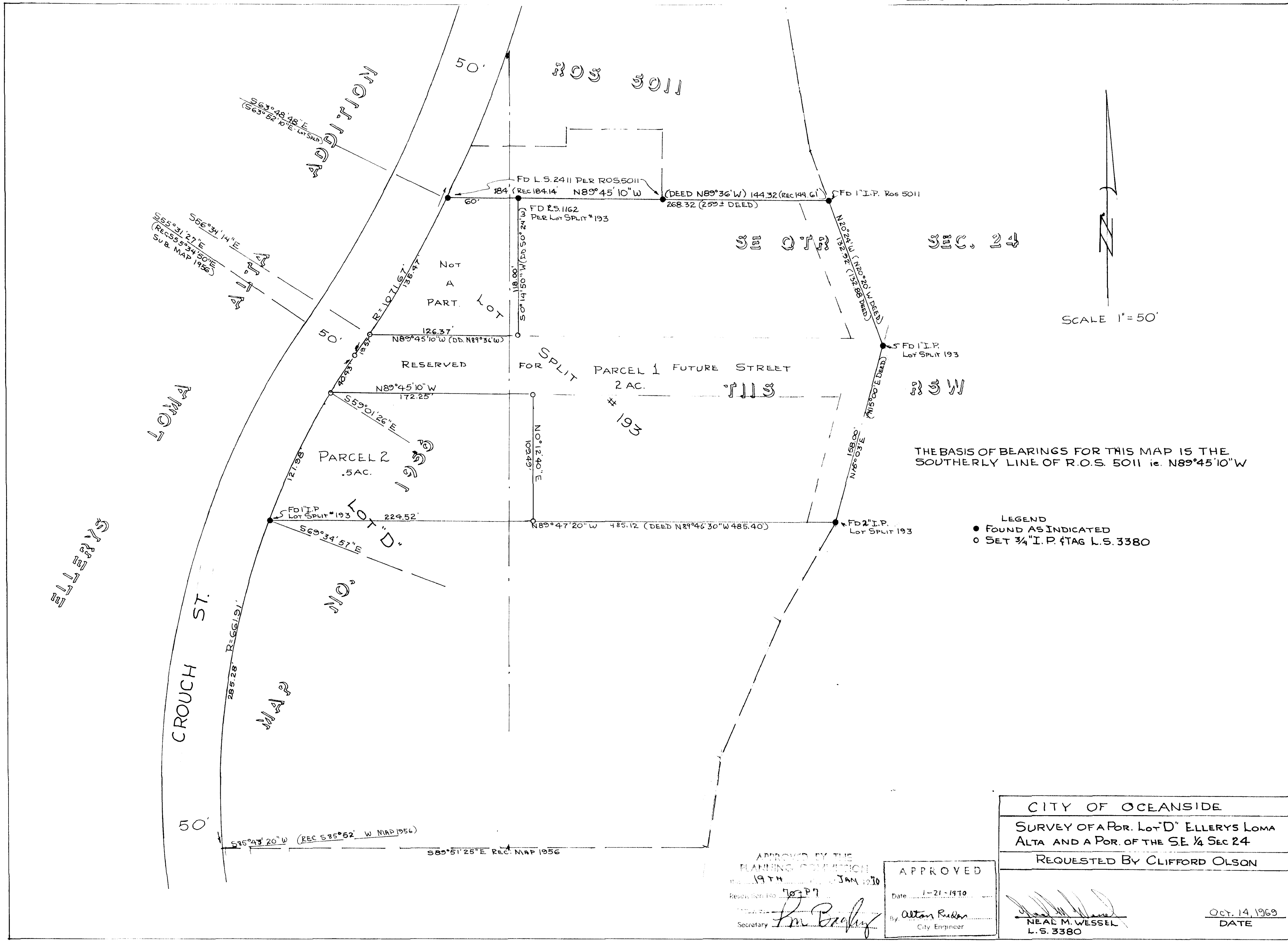


LOT SPLIT MAP # 522



CITY OF OCEANSIDE	
SURVEY OF A POR. LOT "D" ELLERYS LOMA ALTA AND A POR. OF THE SE 1/4 SEC 24	
REQUESTED BY CLIFFORD OLSON	
APPROVED BY THE PLANNING COMMISSION Date: 1-21-1970 Resolution No: 10377 Secretary: <i>[Signature]</i>	APPROVED Date: 1-21-1970 By: <i>[Signature]</i> City Engineer
<i>[Signature]</i> NEAL M. WESSEL L.S. 3380	OCT. 14, 1969 DATE