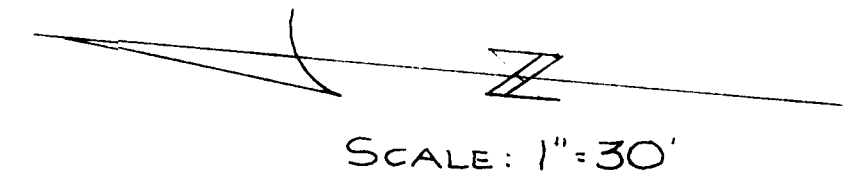


LOT SPLIT No. 516

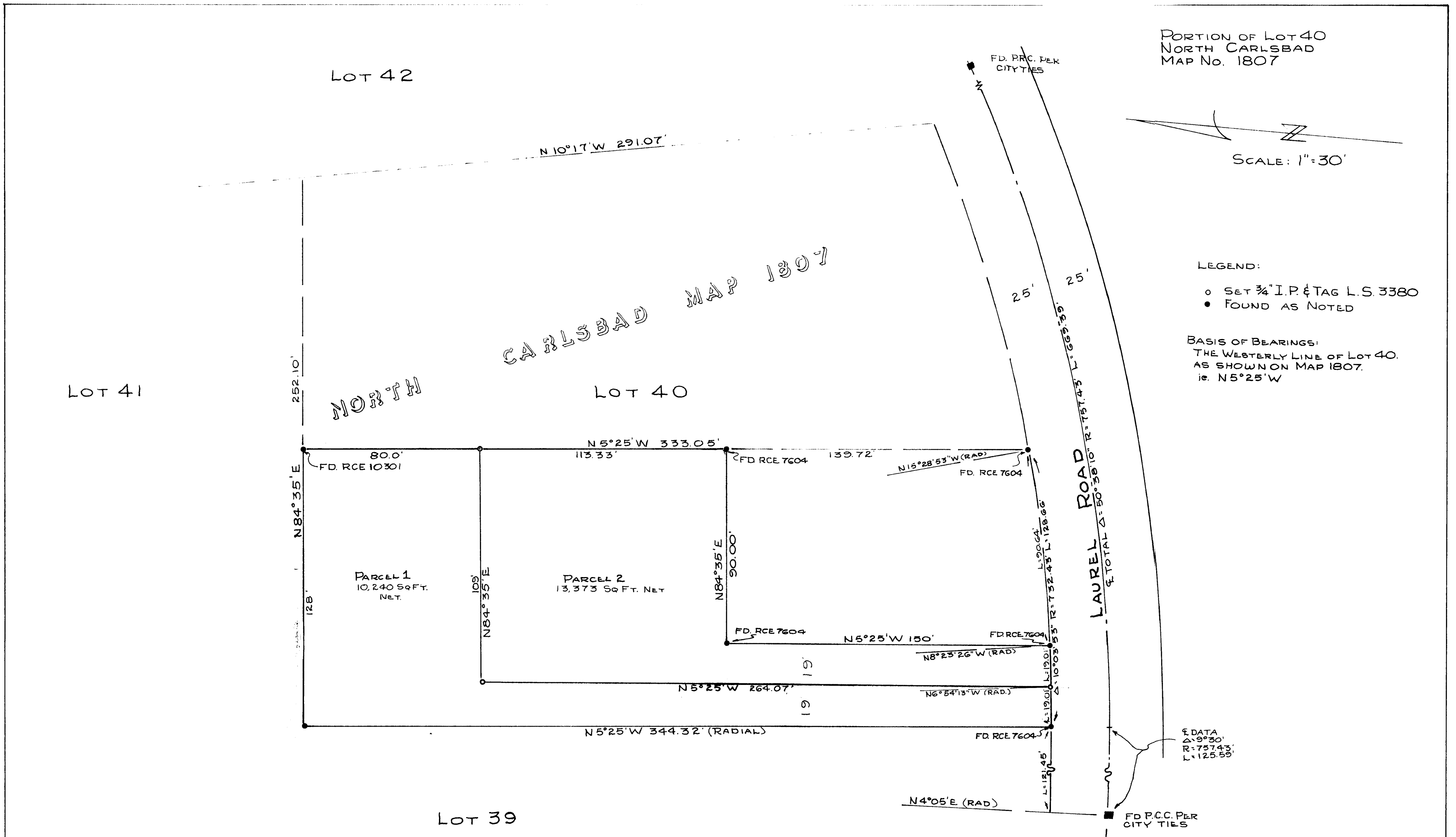
PORTION OF LOT 40
NORTH CARLSBAD
MAP No. 1807



LEGEND:

- SET 3/4" I.P. & TAG L.S. 3380
- FOUND AS NOTED

BASIS OF BEARINGS:
THE WESTERLY LINE OF LOT 40.
AS SHOWN ON MAP 1807.
ie. N5°25'W



DATA
Δ: 9°30'
R: 757.43'
L: 125.55'

REQUESTED BY R. C. SMITH

PORTION OF LOT 40 NORTH CARLSBAD
SUBDIVISION MAP No 1807

RECORDED IN THE
CLERK'S OFFICE
ON 21st OCT 1969
BOOK 68P-89
Secretary *Am Bagley*

Alton L. Ruden
ALTON L. RUDEN RCE10163
CITY ENGINEER
OCEANSIDE, CALIFORNIA

Neal M. Wessel
NEAL M. WESSEL
L.S. 3380

6-5-69
DATE