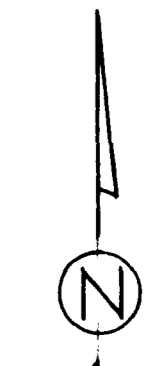
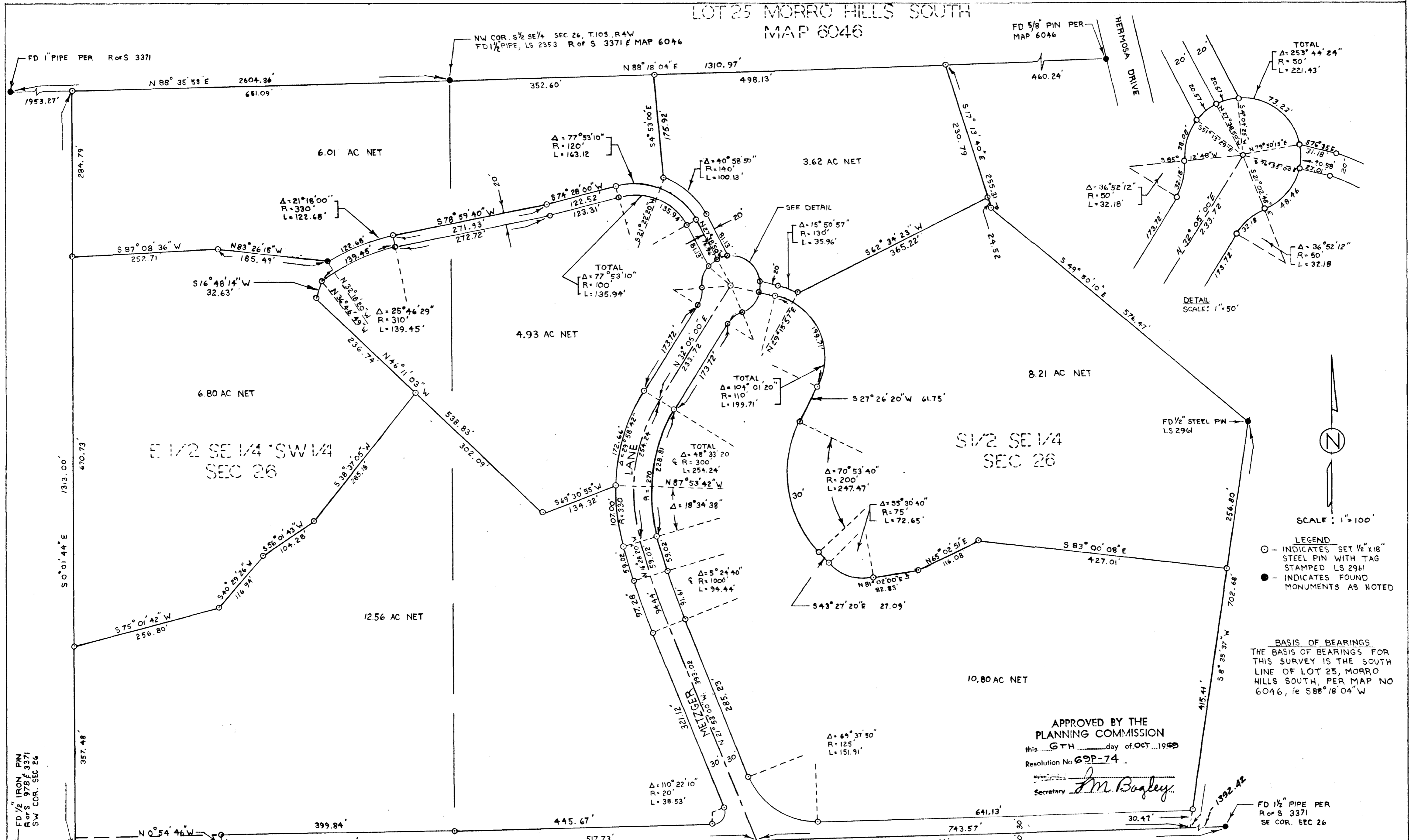


LOT SPLIT MAP NO. 515

LOT 25 MORRO HILLS SOUTH MAP 6046



SCALE: 1" = 100'

LEGEND
 ○ - INDICATES SET 1/2" x 18" STEEL PIN WITH TAG STAMPED LS 2961
 ● - INDICATES FOUND MONUMENTS AS NOTED

BASIS OF BEARINGS.
 THE BASIS OF BEARINGS FOR THIS SURVEY IS THE SOUTH LINE OF LOT 25, MORRO HILLS SOUTH, PER MAP NO 6046, i.e. S 88° 18' 04" W

APPROVED BY THE
 PLANNING COMMISSION
 this... 6TH ... day of OCT ... 1969
 Resolution No 69P-74
 Secretary *J.M. Bagley*

APPROVED
 D to May 18, 1970
 By *Alton F. Ruder*
 City Engineer

THIS MAP CORRECTLY REPRESENTS A SURVEY MADE BY ME OR UNDER MY DIRECTION IN CONFORMANCE WITH THE REQUIREMENTS OF THE LAND SURVEYORS ACT AT THE REQUEST OF LEE METZGER
William Karn
 WILLIAM KARN, LS 2961

LOT SPLIT MAP
 CITY OF OCEANSIDE
 A DIVISION OF A PORTION OF THE
 S 1/2 SE 1/4 E 1/2 SE 1/4 SW 1/4 SEC 26 T10S R4W
 SBM. CITY OF OCEANSIDE
 SAN DIEGO COUNTY, CALIFORNIA
 OWNER
 LEE METZGER
 2122 N. FLOWER
 SANTA ANA, CALIFORNIA

FD 1/2" IRON PIN
 R of S 3371
 SW COR. SEC 26

RESERVED FOR
 FUTURE STREET

1/4 CORNER
 SET 2" PIPE IN PLACE OF
 BENT 1/2" IRON PIN.

FD 1/2" PIPE PER
 R of S 3371
 SE COR. SEC 26