

SPLIT LOT SURVEY
 OF A PORTION OF LOT 7, ELLERY HEIGHTS, MAP 2356, IN THE CITY OF OCEANSIDE, STATE OF CALIFORNIA.

SCALE: 1"=30'

— LEGEND —

- INDICATES SET 3/4" IRON PIPE WITH DISC STAMPED LS 2789.
- INDICATES MONUMENTS FOUND AS NOTED HEREON.
- INDICATES MONUMENTS FOUND OF RECORD PER MAP 2356.

SCALE: 1"=30'

BASIS OF BEARING

THE BASIS OF BEARING FOR THIS SURVEY IS THE CENTERLINE OF PARNASSUS CIRCLE ADJACENT TO LOT 7 - VIZ: S 67°45'30"E

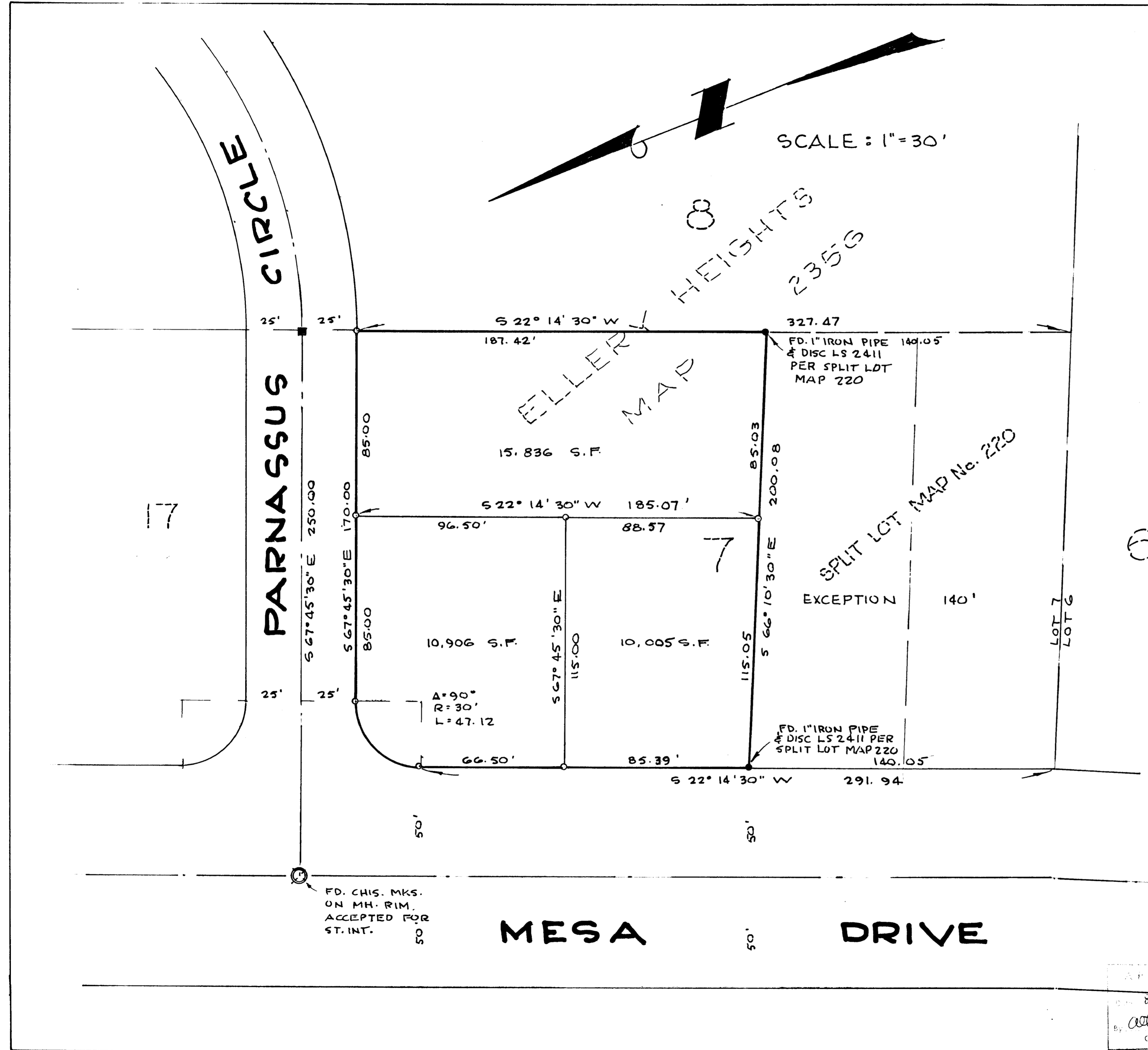
THIS MAP CORRECTLY REPRESENTS A SURVEY MADE BY ME OR UNDER MY SUPERVISION IN CONFORMANCE WITH THE REQUIREMENTS OF CHAPTER 15 OF DIVISION 3 OF THE BUSINESS AND PROFESSIONS CODE AT THE REQUEST OF JOE SPIGNESI, IN APRIL, 1969.

Gustav J. Kamptner
 L.S. 2789

I, _____ CITY ENGINEER OF THE CITY OF OCEANSIDE, CALIFORNIA HEREBY STATE THAT I HAVE EXAMINED THIS MAP AND FIND THAT IT APPEARS TO MEET SAID CITY'S REQUIREMENTS AS TO ACCURACY OF MATHEMATICAL DATA AND THAT IT DOES NOT APPEAR TO BE IN CONFLICT WITH SECTION 11535 OF THE SUBDIVISION MAP ACT.

NOTE: CORNER MONUMENTS AS INDICATED WILL BE SET BY ME WITHIN 30 DAYS FROM THE DATE OF APPROVAL OF THIS MAP BY THE CITY OF OCEANSIDE.

Gustav J. Kamptner
 L.S. 2789



DRAWN G.J.K.	GUSTAV J. KAMPTNER LICENSED LAND SURVEYOR	DATE: APRIL 1969
CHECKED	<i>Gustav J. Kamptner</i> L.S. 2789	SCALE
APPROVED	3185 MONROE STREET CARLSBAD, CALIFORNIA	SHEET 1 OF 1

APPROVED
 APR 8 - 12 - 1969
Alton Ruben
 City Engineer