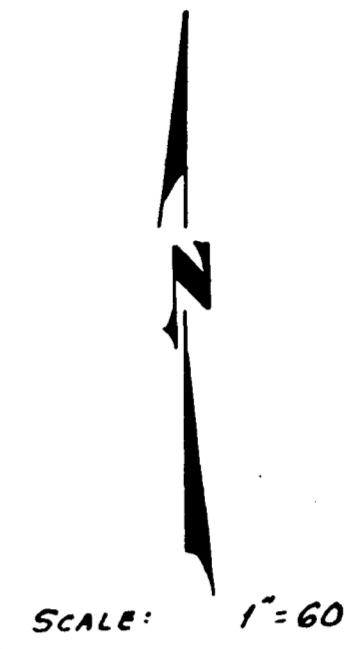
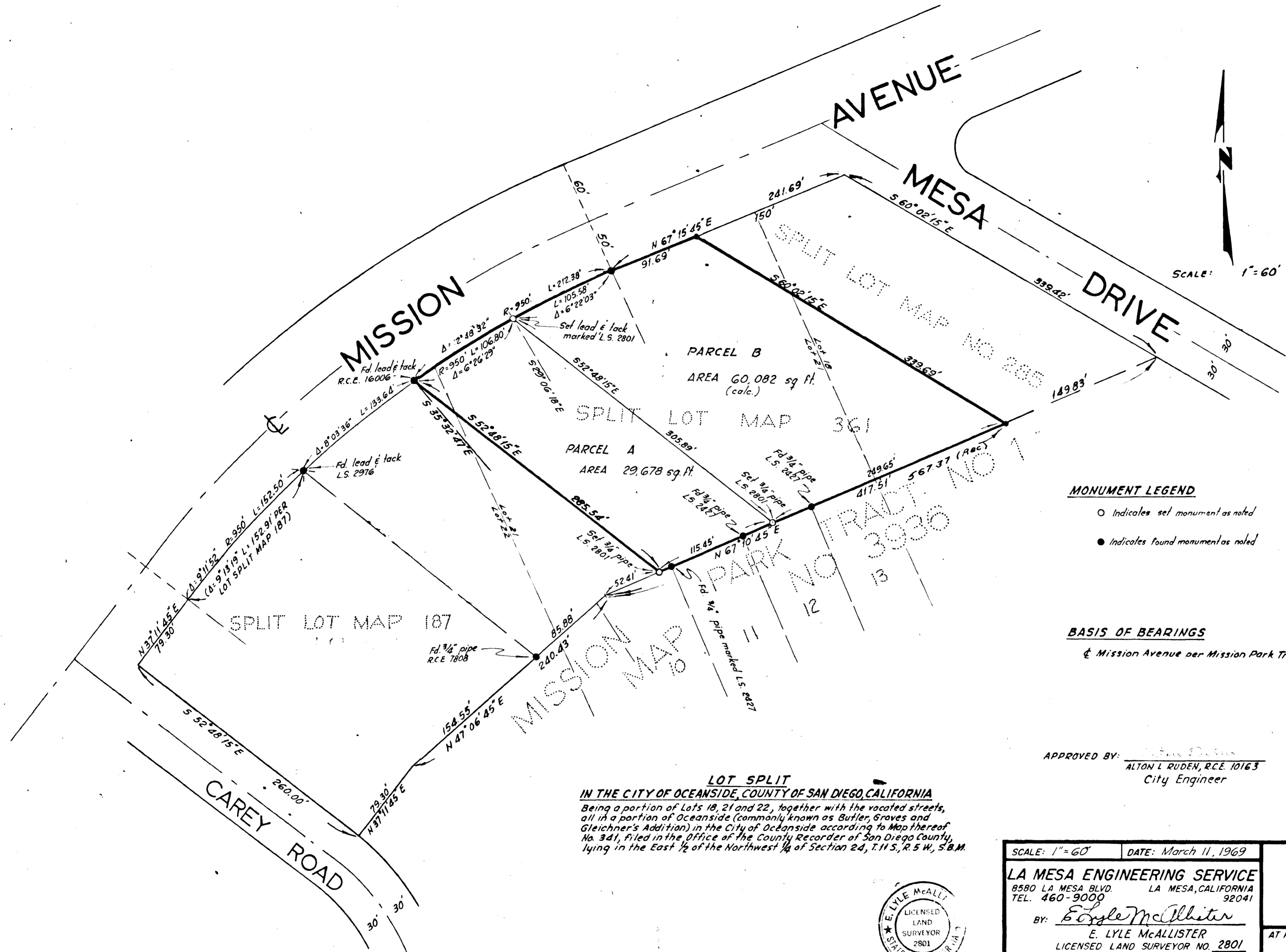


# LOT SPLIT MAP



**MONUMENT LEGEND**  
 ○ Indicates set monument as noted  
 ● Indicates found monument as noted

**BASIS OF BEARINGS**  
 ☞ Mission Avenue per Mission Park Tract No. 1, Map No. 3936, i.e. N 67° 15' 45" E

APPROVED BY: Alton L. Ruden  
 ALTON L. RUDEN, R.C.E. 10163  
 City Engineer

**LOT SPLIT**  
**IN THE CITY OF OCEANSIDE, COUNTY OF SAN DIEGO, CALIFORNIA**  
 Being a portion of Lots 18, 21 and 22, together with the vacated streets, all in a portion of Oceanside (commonly known as Butler, Groves and Gleichner's Addition) in the City of Oceanside according to Map thereof No. 341, filed in the Office of the County Recorder of San Diego County, lying in the East 1/2 of the Northwest 1/4 of Section 24, T. 11 S., R. 5 W., S.B.M.

L.M.E. 5 1721-642  
 DWG. 336



SCALE: 1" = 60'	DATE: March 11, 1969	<b>LOT SPLIT</b>	
<b>LA MESA ENGINEERING SERVICE</b> 8580 LA MESA BLVD. LA MESA, CALIFORNIA 92041 TEL. 460-9000			
BY: <u>E. Lyle McAllister</u> E. LYLE McALLISTER LICENSED LAND SURVEYOR NO. 2801		AT REQUEST OF: THE PACIFIC TELEPHONE AND TELEGRAPH COMPANY & MARTIN L. ITO	
DRAWN BY: W.R.P.Jr. CALC. BY: W.R.P.Jr. CK. BY: _____ F. B. Loose Leaf		SHEET <u>1</u> OF <u>1</u> SHEETS	