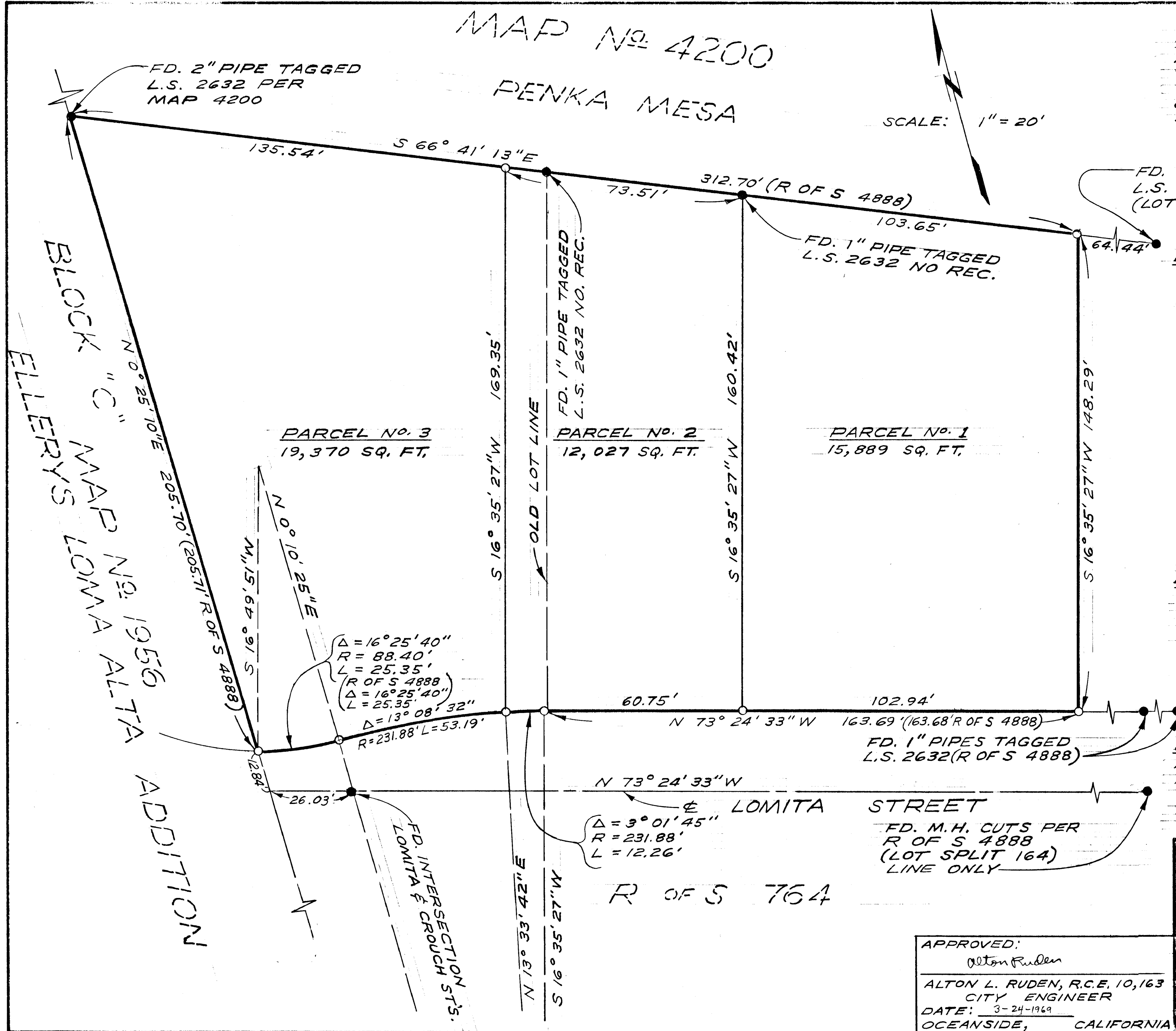


MAP No. 4200  
PENKA MESA

**LEGAL DESCRIPTION:**  
A PORTION OF THE N.E. 1/4 OF THE S.E. 1/4 OF SECTION 24, T.11 S, R.5 W, S.B.B. & M. IN THE CITY OF OCEANSIDE, COUNTY OF SAN DIEGO, STATE OF CALIFORNIA

SCALE: 1" = 20'



FD. 1" PIPE TAGGED L.S. 2632 PER R OF S 4888 (LOT SPLIT 164)

**LEGEND:**  
● FD. AS SHOWN  
○ SET 1" I.D. PIPE TAGGED R.C.E. 13,817

**BASIS OF BEARINGS:**  
THE NORTHERLY LINE PER LOT SPLIT MAP No. 164, (R OF S 4888) I.E. S 66° 41' 13" E

**NOTE:**  
MAP REVISES LOT LINE BETWEEN PARCELS 2 & 3. LINE BETWEEN PARCELS 1 & 2 IN ACCORDANCE WITH DOC. No. 18812 FILED JANUARY 28, 1960

<b>LOT SPLIT MAP</b>		
FOR <b>JOHN GALLICE</b>		
OCEANSIDE, CALIFORNIA		
APPROVED: <i>Alton Ruden</i>	DRAWN: HP E. BRIAN SMITH ENGINEERS 528 SOUTH HILL STREET OCEANSIDE, CALIFORNIA	DATE: 1-14-69
ALTON L. RUDEN, R.C.E. 10,163 CITY ENGINEER	CHECKED: H.L.T. <i>E. Brian Smith</i>	SCALE: 1" = 20'
DATE: 3-24-1969 OCEANSIDE, CALIFORNIA	APPROVED: E.B.S. E. BRIAN SMITH, R.C.E. 13,817	SHEET: 1 OF 1

BLOCK "C" MAP No. 1956  
ELLEFRYS LOMA ALTA ADDITION