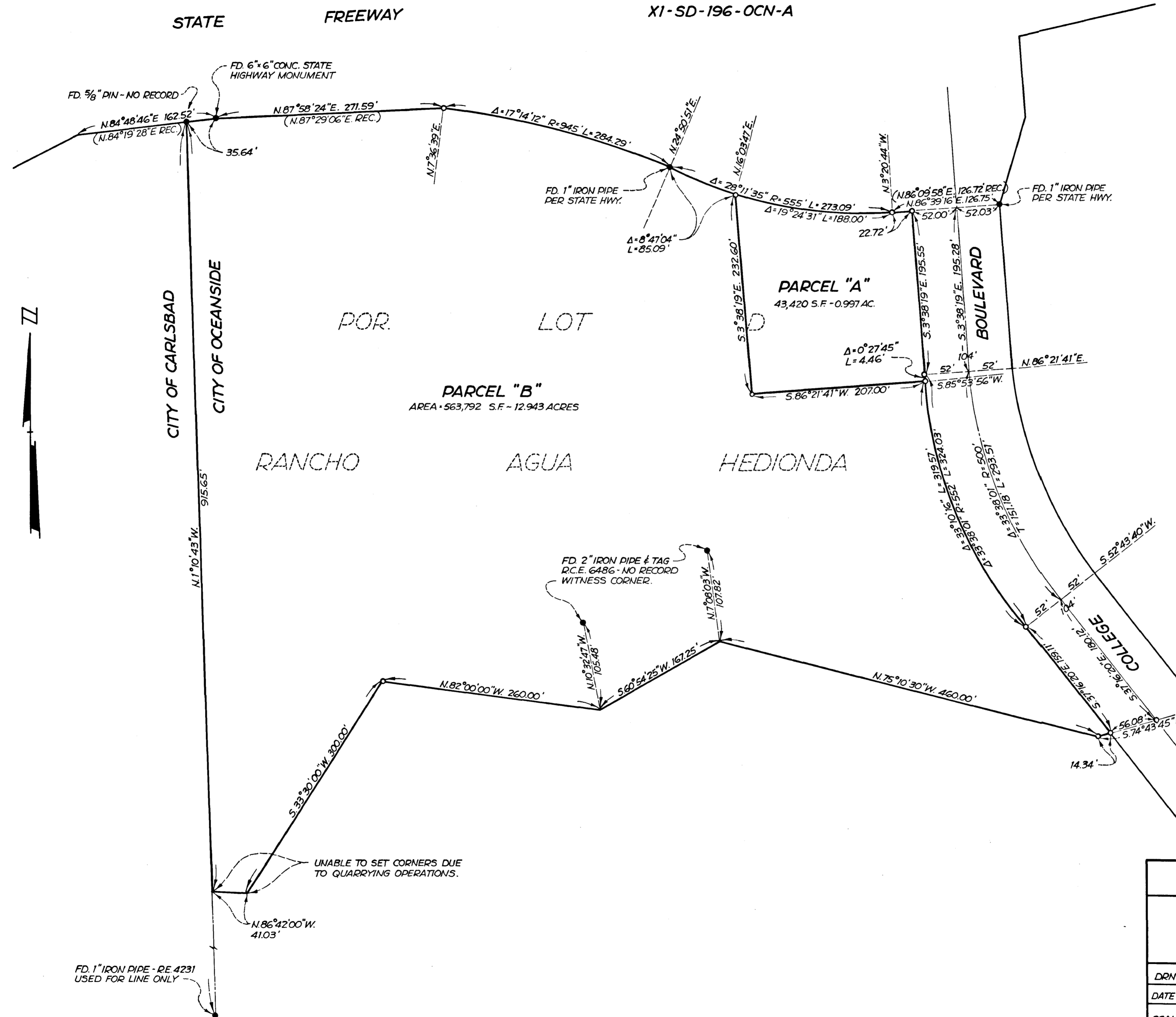


SPLIT LOT MAP 495



LEGEND

- INDICATES FOUND POINT AS NOTED HEREON.
- INDICATES FOUND 2" IRON PIPE & TAG "R.C.E. 6486", NO RECORD.

BASIS OF BEARINGS

THE CENTERLINE OF COLLEGE BLVD. SOUTH OF HWY. 78 HAVING A BEARING OF S. 3° 38' 19" E., PER DOC. NO. 61299, SERIES B, BOOK 1967, OFFICIAL RECORDS.

REQUESTED BY: CLAUDE J. KLUG

APPROVED: Alton J. Ruden 3-20-1969
CITY ENGINEER DATE

CITY OF OCEANSIDE		
PORTION OF LOT D RANCHO AGUA HEDIONDA MAP NO. 823		
DRN. WS. DATE 2-27-69	PREPARED BY: ROY L. KLEMA, ENG'RS, INC. 415 HALE AVE., ESCONDIDO, CALIF.	SHEET NO. 1 OF 1
SCALE 1"=80'	SIGNED <u>Roy L. Klema</u> R.C.E. 6486.	JOB NO. 6909