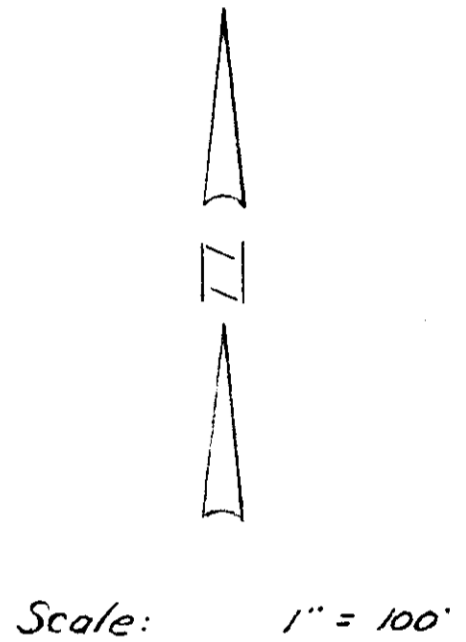
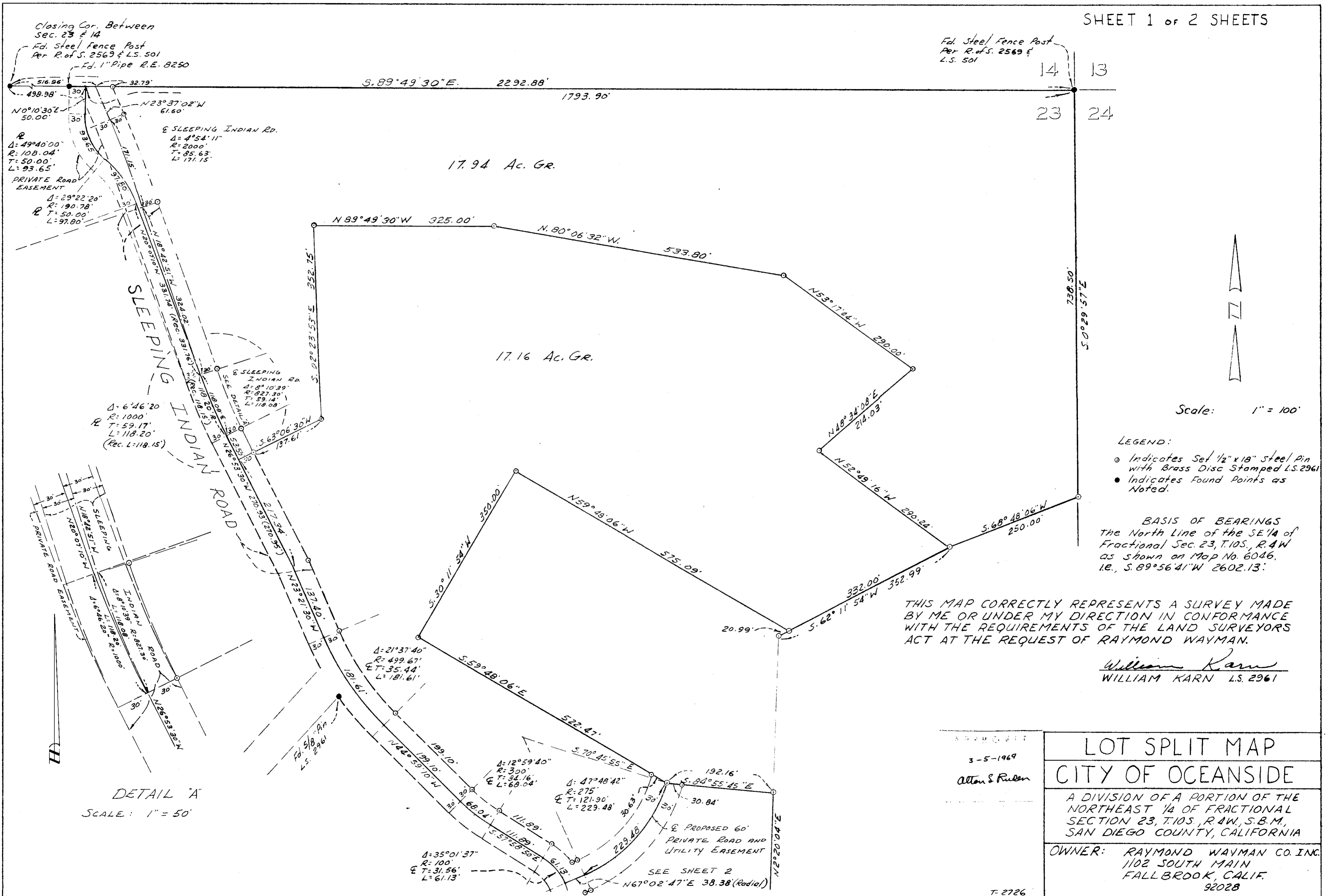


LOT SPLIT MAP No. 491

SHEET 1 of 2 SHEETS



- LEGEND:
- Indicates Set 1/2" x 1/8" Steel Pin with Brass Disc Stamped L.S. 2961
 - Indicates Found Points as Noted.

BASIS OF BEARINGS
 The North Line of the SE 1/4 of Fractional Sec. 23, T.10S., R.4W. as shown on Map No. 6046, i.e., S. 89° 56' 41" W 2602.13'

THIS MAP CORRECTLY REPRESENTS A SURVEY MADE BY ME OR UNDER MY DIRECTION IN CONFORMANCE WITH THE REQUIREMENTS OF THE LAND SURVEYORS ACT AT THE REQUEST OF RAYMOND WAYMAN.

William Karn
 WILLIAM KARN L.S. 2961

APPROVED
 3-5-1969
 Alton S. Ruelen

LOT SPLIT MAP	
CITY OF OCEANSIDE	
A DIVISION OF A PORTION OF THE NORTHEAST 1/4 OF FRACTIONAL SECTION 23, T.10S., R.4W., S.B.M., SAN DIEGO COUNTY, CALIFORNIA	
OWNER:	RAYMOND WAYMAN CO. INC. 1102 SOUTH MAIN FALLBROOK, CALIF. 92028

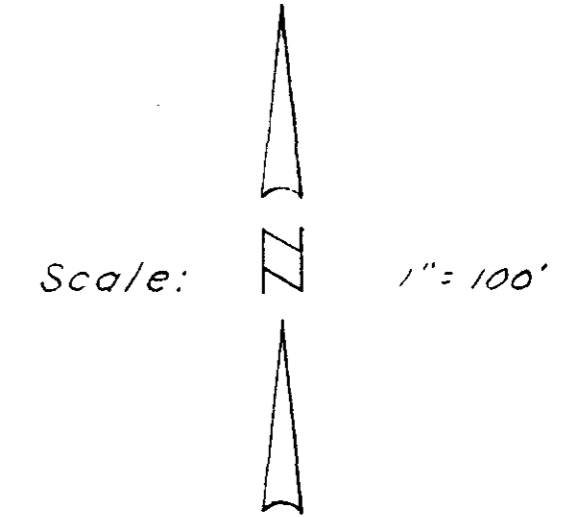
T-2726

LOT SPLIT MAP No. 491

SHEET 2 OF 2 SHEETS

See Sheet 1

NE Cor. Sec. 23
Fd. Steel fence
Post Per Rof.S. 2569 &
L.S. 501



- ① S. 32°00'30" W 174.60'
- ② Δ: 12°19'50"
R: 300'
T: 32.41'
L: 64.56'
- ③ S. 19°40'40" W 79.41'
- ④ Δ: 29°33'55"
R: 116.83'
T: 30.83'
L: 60.29'
- ⑤ S. 9°53'15" E 79.77'
- ⑥ Δ: 21°11'35"
R: 115.31'
T: 21.57'
L: 42.65'
- ⑦ S. 31°04'50" E 351.31'
- ⑧ Δ: 68°35'40"
R: 237.63'
T: 162.12'
L: 284.55'
- ⑨ Δ: 25°13'04"
R: 237.63'
T: 53.17'
L: 104.61'
- ⑩ Δ: 43°22'36"
R: 237.63'
T: 94.53'
L: 179.94'

