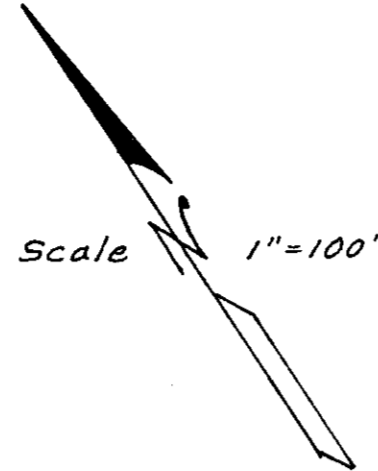


# LOT SPLIT MAP NO. 490

Showing a division of a portion of Lot 4 - Rancho Guajome - Partition Map S.C.C. No. 10201 City of Oceanside - County of San Diego California

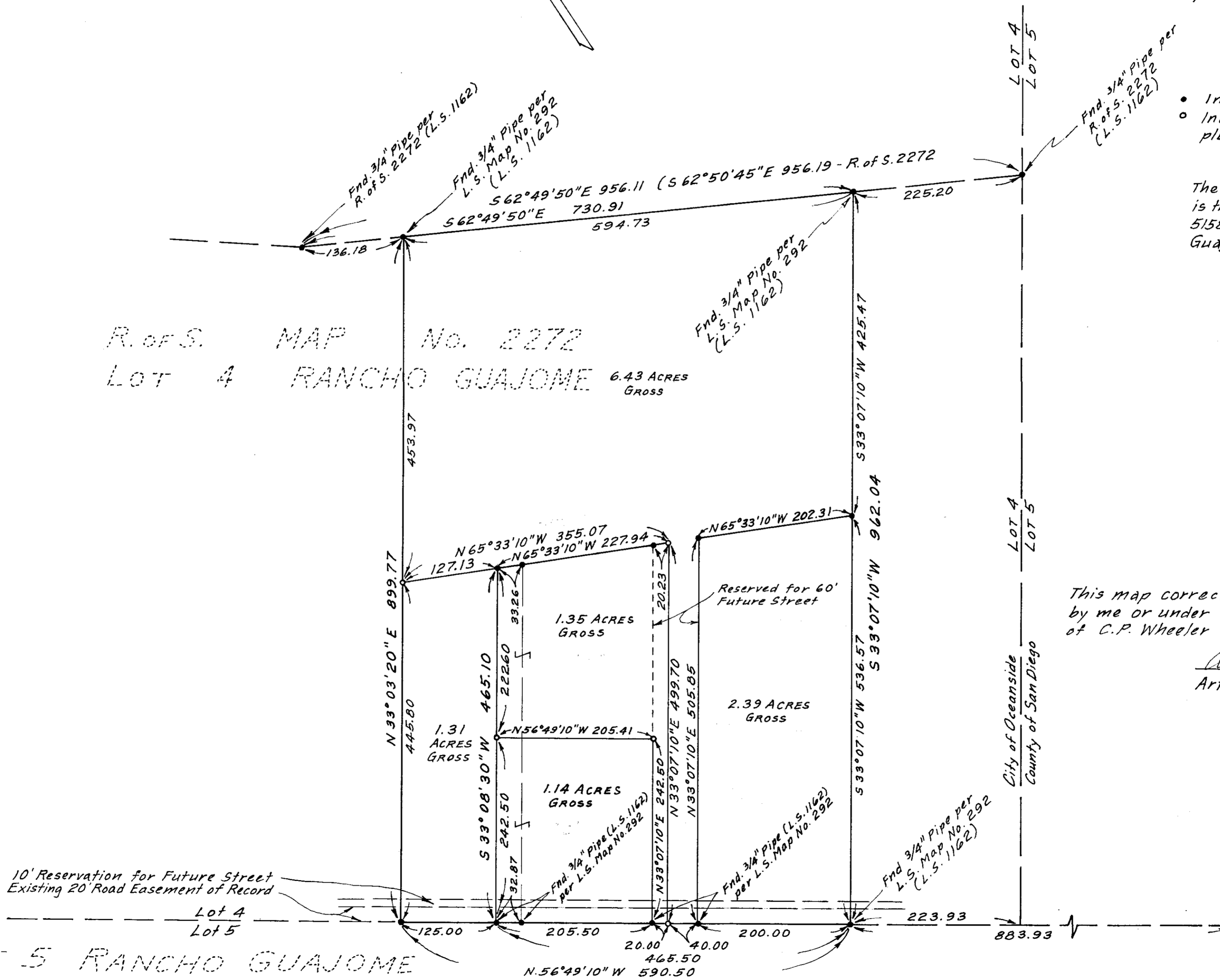


### LEGEND

- Indicates points found as noted
- Indicates Set 3/4" Pipe with cement plug & brass disk marked RCE 10166

The basis of bearings for this survey is the N.Ely boundary line of R. of S. 5158 (Line common to Lots 4 & 5 Rancho Guajome) Viz N56°49'10"W

R. of S. MAP No. 2272  
 Lot 4 RANCHO GUAJOME 6.43 ACRES GROSS



This map correctly represents a survey made by me or under my direction at the request of C.P. Wheeler in January 1969

Arthur E. Rutsch  
 Arthur E. Rutsch R.C.E. 10166

APPROVED BY THE PLANNING COMMISSION  
 this 31<sup>st</sup> day of JAN. 1969  
 Resolution No. 69-P5  
 Secretary [Signature]

LOT 5 RANCHO GUAJOME  
 R. of S. MAP No. 5158

Approved Alton L. Ruden 2-3-1969  
 Alton L. Ruden R.C.E. 10163  
 City Engineer