

LOT SPLIT MAP NO. 489

LEGAL DESCRIPTION:
 A PORTION OF HEATHER HOMES TRACT NO. 2, MAP NO. 1964 FILED NOV. 24, 1926 IN THE OFFICE OF THE COUNTY RECORDER OF SAN DIEGO COUNTY, CITY OF OCEANSIDE, COUNTY OF SAN DIEGO, STATE OF CALIFORNIA

- LEGEND:**
- FOUND AS SHOWN
 - SET TAG R.C.E. 13,817 IN CONC. SIDEWALK ON 1.00' OFFSET OR 1" PIPE TAGGED R.C.E. 13,817 ON INTERNAL PROPERTY CORNERS
 - ⊕ CUT CROSS IN CURB FOR SWING TIES TO EXISTING STREET INTERSECTION MONUMENTS.
 - + EXISTING CURB CUTS FOR SWING TIES PER CITY RECORDS

BASIS OF BEARINGS:
 THE CENTER LINE OF HILL STREET PER MAP 1964, I.E. N 35° 22' W

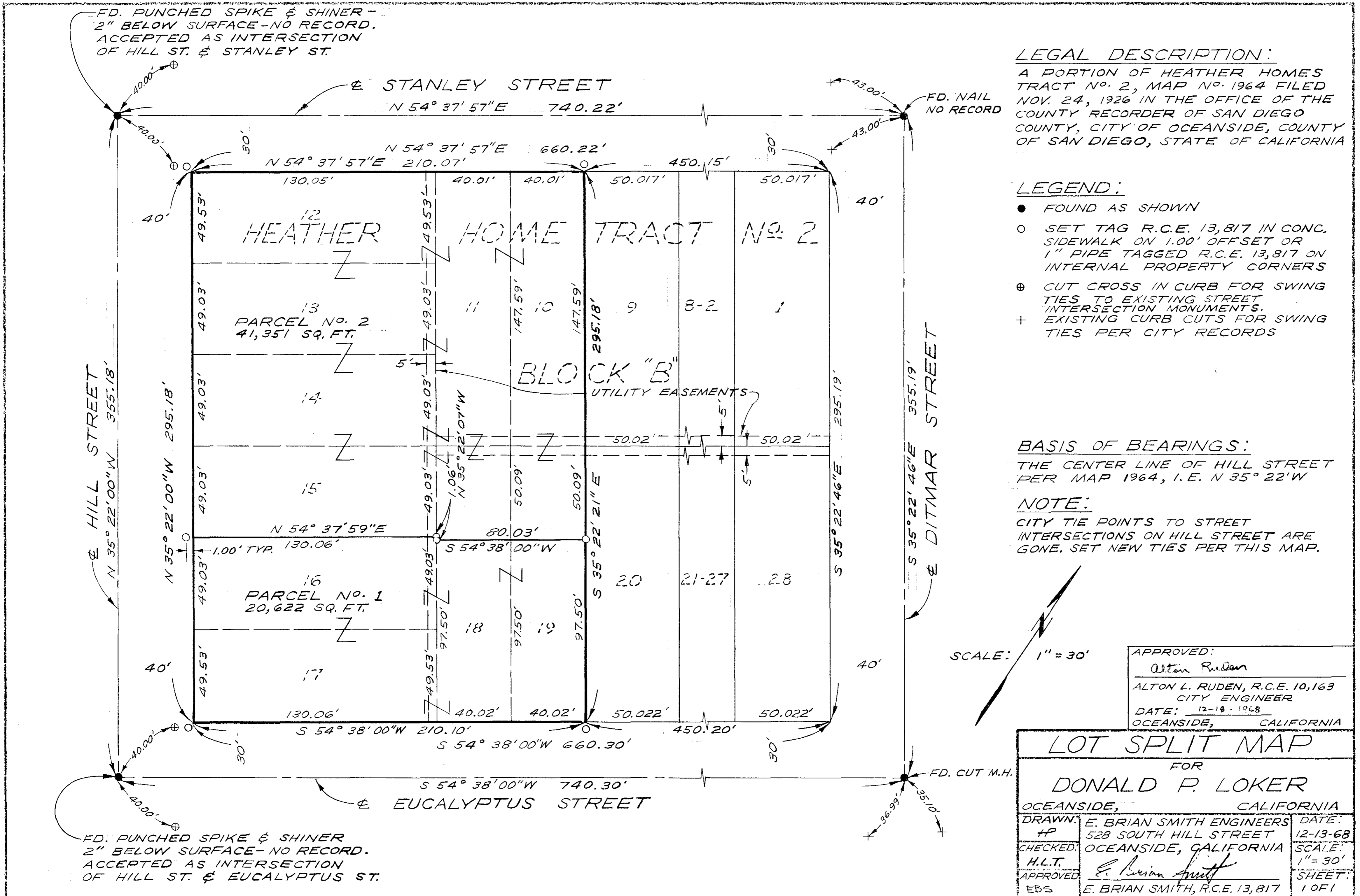
NOTE:
 CITY TIE POINTS TO STREET INTERSECTIONS ON HILL STREET ARE GONE. SET NEW TIES PER THIS MAP.

SCALE: 1" = 30'

APPROVED:
Alton Ruden
 ALTON L. RUDEN, R.C.E. 10,163
 CITY ENGINEER
 DATE: 12-18-1968
 OCEANSIDE, CALIFORNIA

LOT SPLIT MAP
 FOR
DONALD P. LOKER
 OCEANSIDE, CALIFORNIA

DRAWN: #P	E. BRIAN SMITH ENGINEERS 528 SOUTH HILL STREET OCEANSIDE, CALIFORNIA	DATE: 12-13-68
CHECKED: H.L.T.		SCALE: 1" = 30'
APPROVED: EBS	<i>E. Brian Smith</i> E. BRIAN SMITH, R.C.E. 13,817	SHEET: 1 OF 1



FD. PUNCHED SPIKE & SHINER - 2" BELOW SURFACE - NO RECORD. ACCEPTED AS INTERSECTION OF HILL ST. & STANLEY ST.

FD. NAIL NO RECORD

FD. PUNCHED SPIKE & SHINER 2" BELOW SURFACE - NO RECORD. ACCEPTED AS INTERSECTION OF HILL ST. & EUCALYPTUS ST.

FD. CUT M.H.