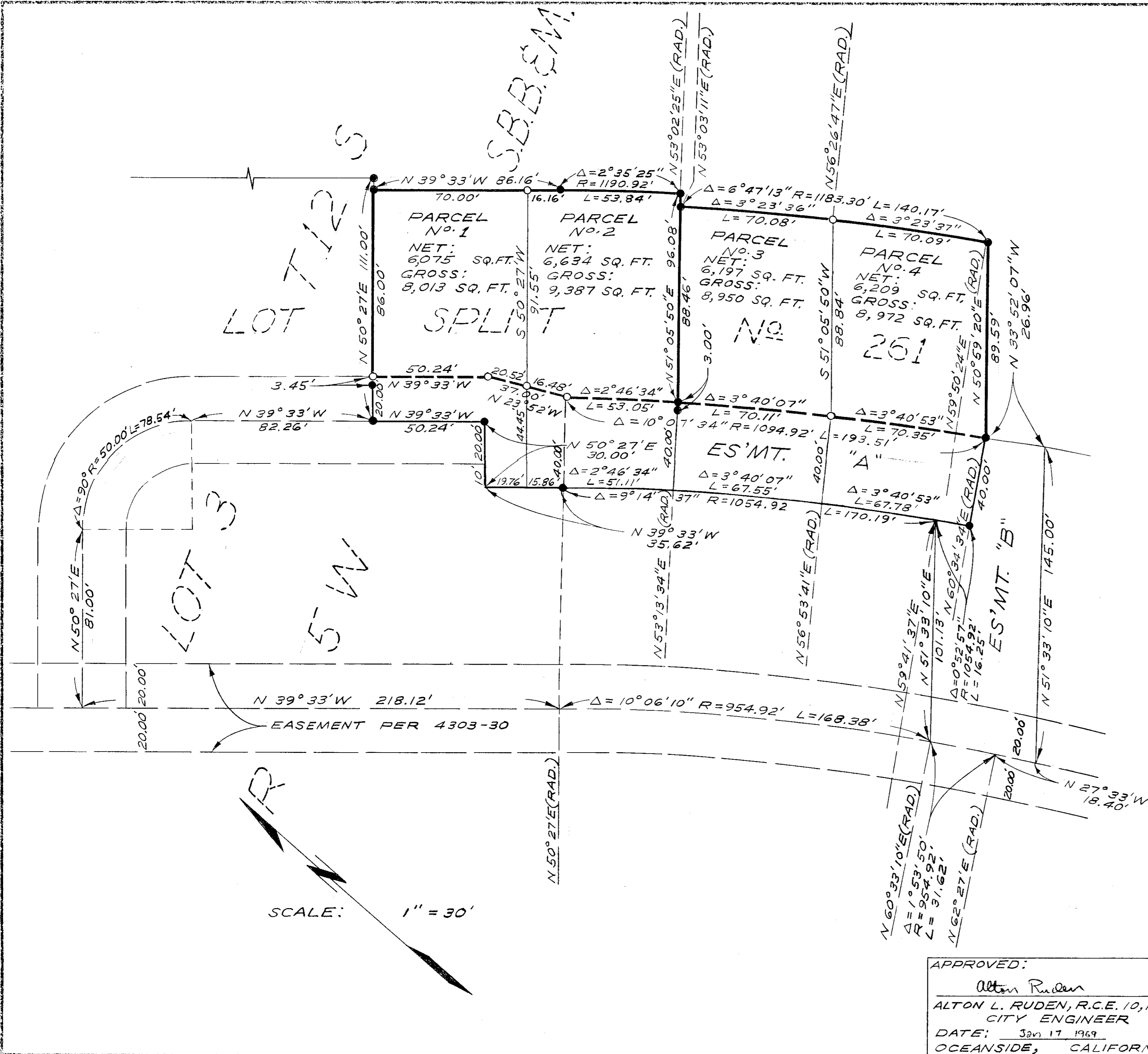


LOT SPLIT MAP No. 487



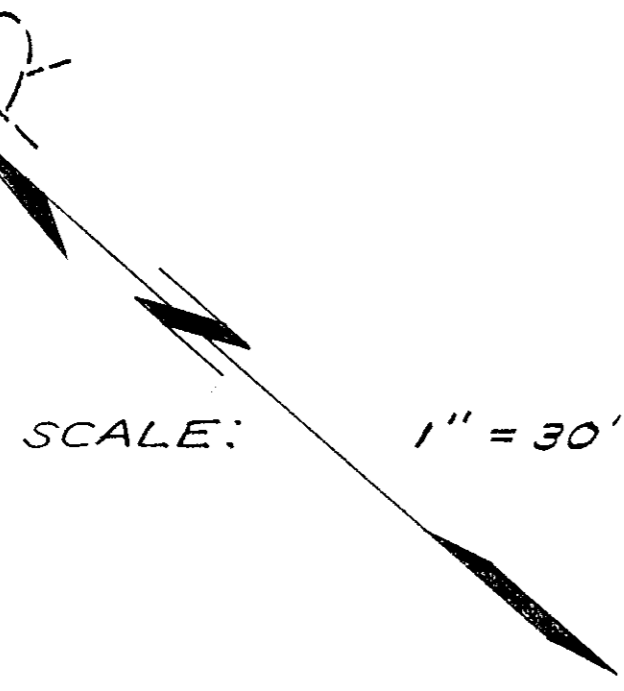
LEGAL DESCRIPTION:
 PORTION OF LOT 3, SECTION 1,
 T 12 S, R 5 W, S. B. B. & M.,
 ST. MALO BEACH, CITY OF OCEANSIDE,
 COUNTY OF SAN DIEGO, STATE OF
 CALIFORNIA

LEGEND:
 ● FOUND 3/4" PIPE TAGGED L.S. 2940
 ○ SET 1" PIPE TAGGED R.C.E. 13,317

BASIS OF BEARINGS:
 THE WESTERLY LINE OF PARCEL 1
 PER LOT SPLIT MAP No. 261
 I. E. NORTH 50° 27' 00" EAST

NOTE:
 THIS IS A DIVISION OF THE SOUTHERLY
 TWO LOTS SHOWN ON LOT SPLIT MAP
 No. 261 APPROVED 1-23-61.

APPROVED BY THE
 PLANNING COMMISSION
 this 16th day of Dec. 1968
 Resolution No. _____
 Secretary *Lu Beasley*



LOT SPLIT MAP		
FOR		
MRS. NANCY TENAGLIA		
OCEANSIDE, CALIFORNIA		
APPROVED:	DRAWN:	DATE:
<i>Alton Ruden</i>	E. BRIAN SMITH ENGINEERS	12-12-68
ALTON L. RUDEN, R.C.E. 10,163	528 SOUTH HILL STREET	SCALE:
CITY ENGINEER	OCEANSIDE, CALIFORNIA	1" = 30'
DATE: Jan 17, 1969	CHECKED:	APPROVED:
OCEANSIDE, CALIFORNIA	<i>E. Brian Smith</i>	E. B. S.
	E. BRIAN SMITH, R.C.E. 13,817	SHEET:
		1 OF 1