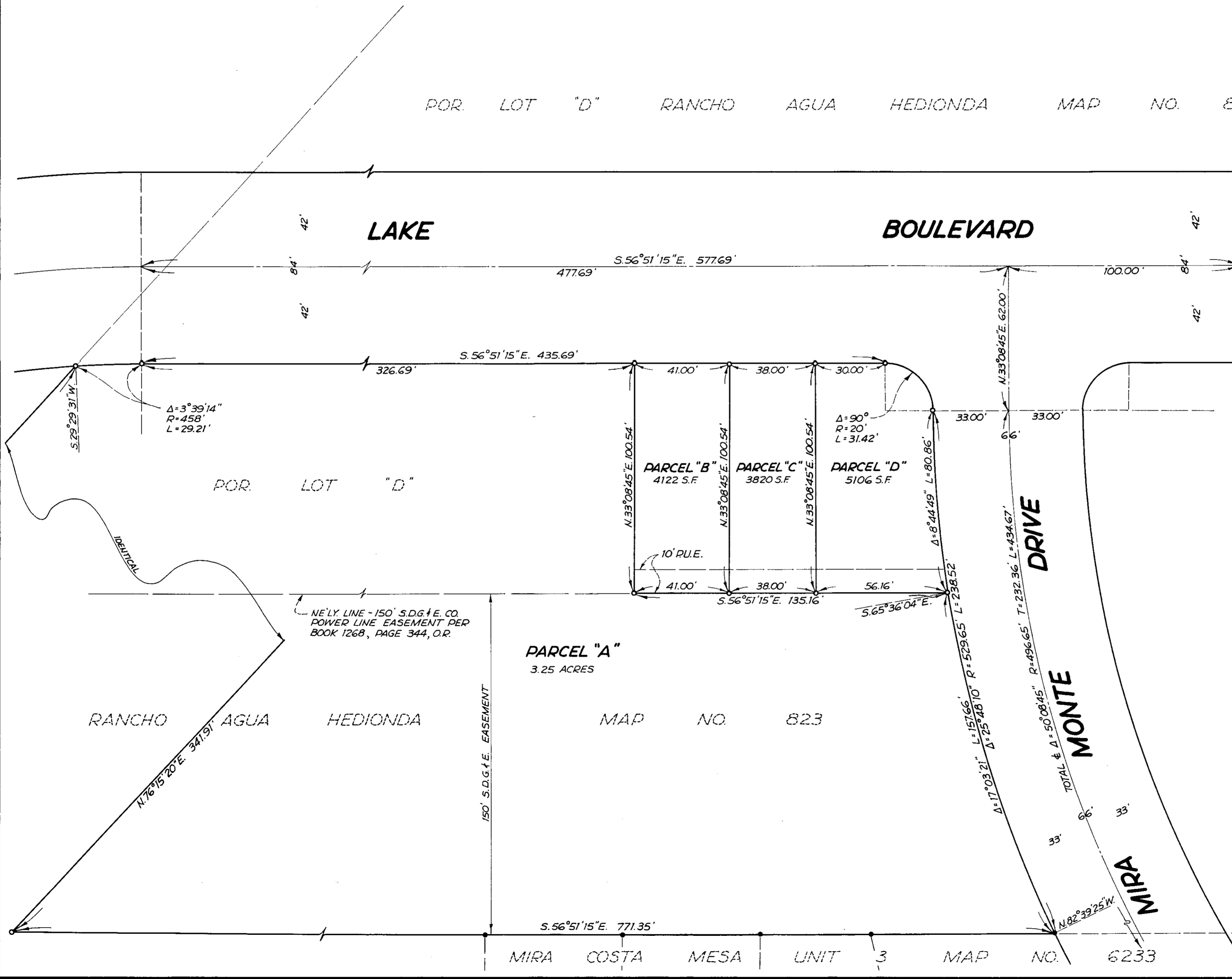
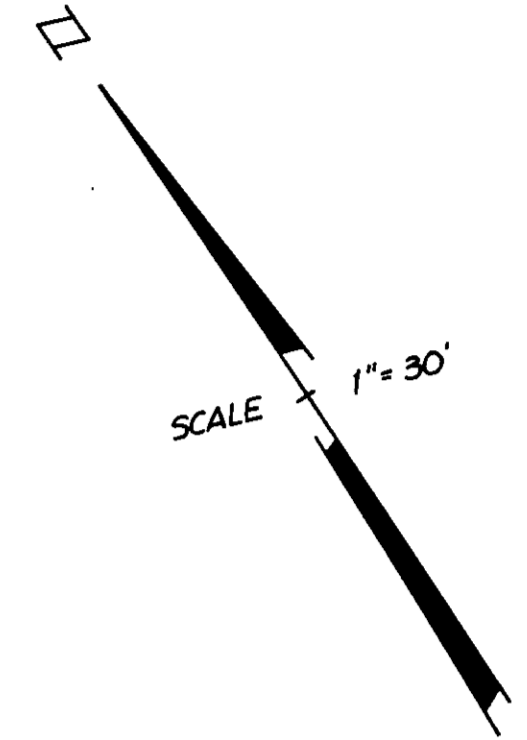


POR. LOT "D" RANCHO AGUA HEDIONDA MAP NO. 823



APPROVED BY THE
PLANNING COMMISSION
this 21ST DAY OF OCTOBER 1968
Resolution No 68-P-90
Secretary *Laurence M. Bradley*

LEGEND

- INDICATES POINT FOUND - 3/4" PIPE WITH DISC STAMPED "R.C.E. 6486" PER MAP NO 6233.
 - INDICATES SET 3/4" IRON PIPE WITH DISC STAMPED "R.C.E. 6486"
- P.U.E. DENOTES PUBLIC UTILITY EASEMENT.

BASIS OF BEARINGS

THE NE'LY. LINE OF MIRA COSTA MESA - UNIT NO 3 PER MAP NO 6233, HAVING A BEARING OF S.56°51'15"E. WAS USED AS THE BASIS OF BEARINGS FOR THIS MAP

REQUESTED BY: KAL - PREM

APPROVED: *Olton & Ruen* DATE: 12-24-1968
CITY ENGINEER

CITY OF OCEANSIDE		
PORTION OF LOT "D" RANCHO AGUA HEDIONDA MAP NO 823		
DRN. W.S.	PREPARED BY: ROY L. KLEMA, ENGRS, INC. 415 HALE AVE., ESCONDIDO, CALIF.	SHEET NO 1 OF 1
DATE: 12-6-68	SIGNED: <i>Roy L. Klema</i> 12/17/68 ROY L. KLEMA, R.C.E. 6486.	JOB NO 6747
SCALE 1" = 30'		