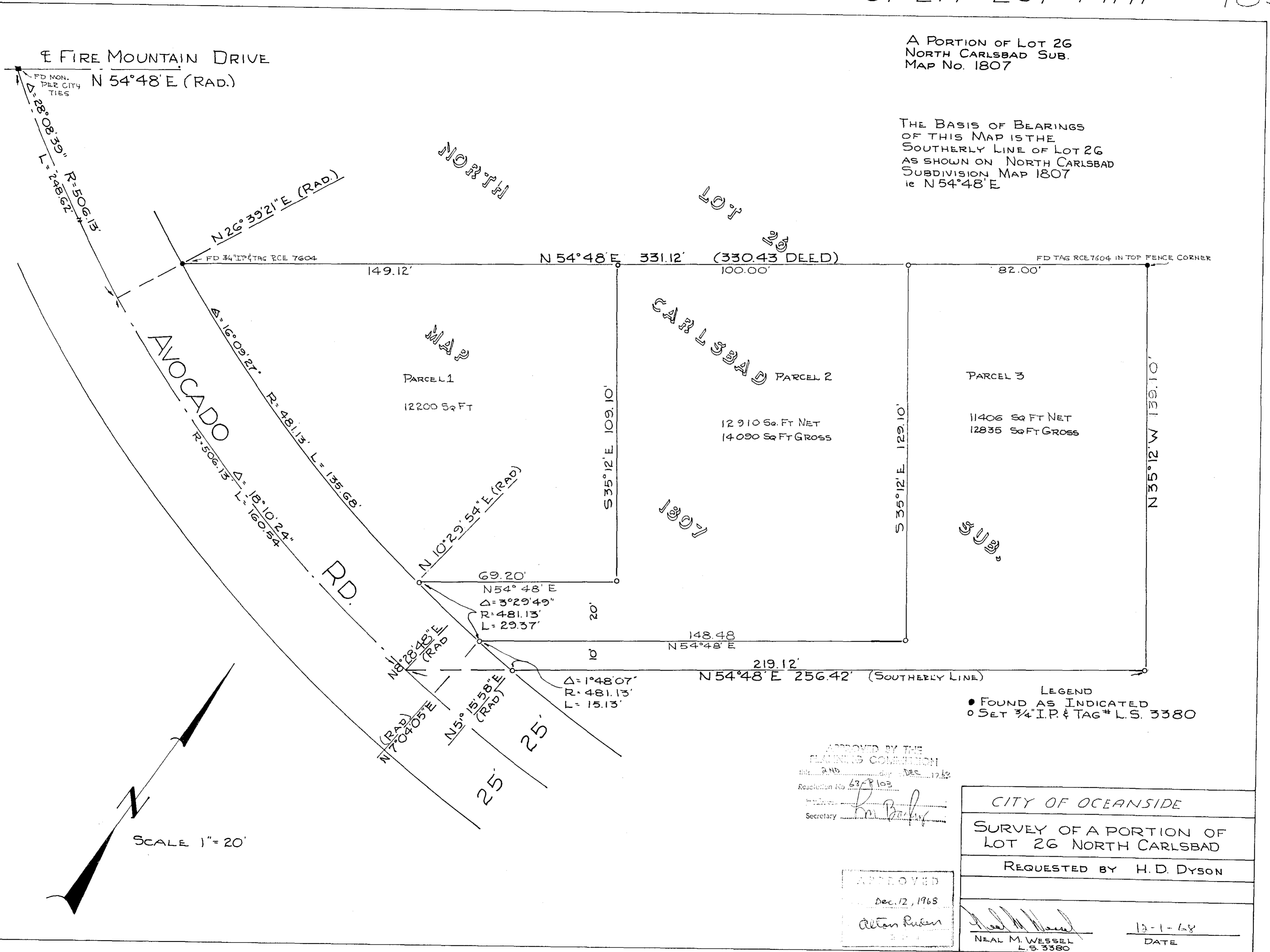


# SPLIT LOT MAP # 485

A PORTION OF LOT 26  
NORTH CARLSBAD SUB.  
MAP No. 1807

THE BASIS OF BEARINGS  
OF THIS MAP IS THE  
SOUTHERLY LINE OF LOT 26  
AS SHOWN ON NORTH CARLSBAD  
SUBDIVISION MAP 1807  
ie N 54°48' E



LEGEND  
● FOUND AS INDICATED  
○ SET 3/4" I.P. & TAG # L.S. 3380

APPROVED BY THE  
PLANNING COMMISSION  
this 2ND day of DEC 1968  
Resolution No. 63 P 103  
Secretary *Ken Barber*

APPROVED  
Dec. 12, 1968  
*Alton Rubin*

CITY OF OCEANSIDE	
SURVEY OF A PORTION OF LOT 26 NORTH CARLSBAD	
REQUESTED BY H. D. DYSON	
<i>Neal M. Wessel</i> NEAL M. WESSEL L.S. 3380	12-1-68 DATE

SCALE 1" = 20'