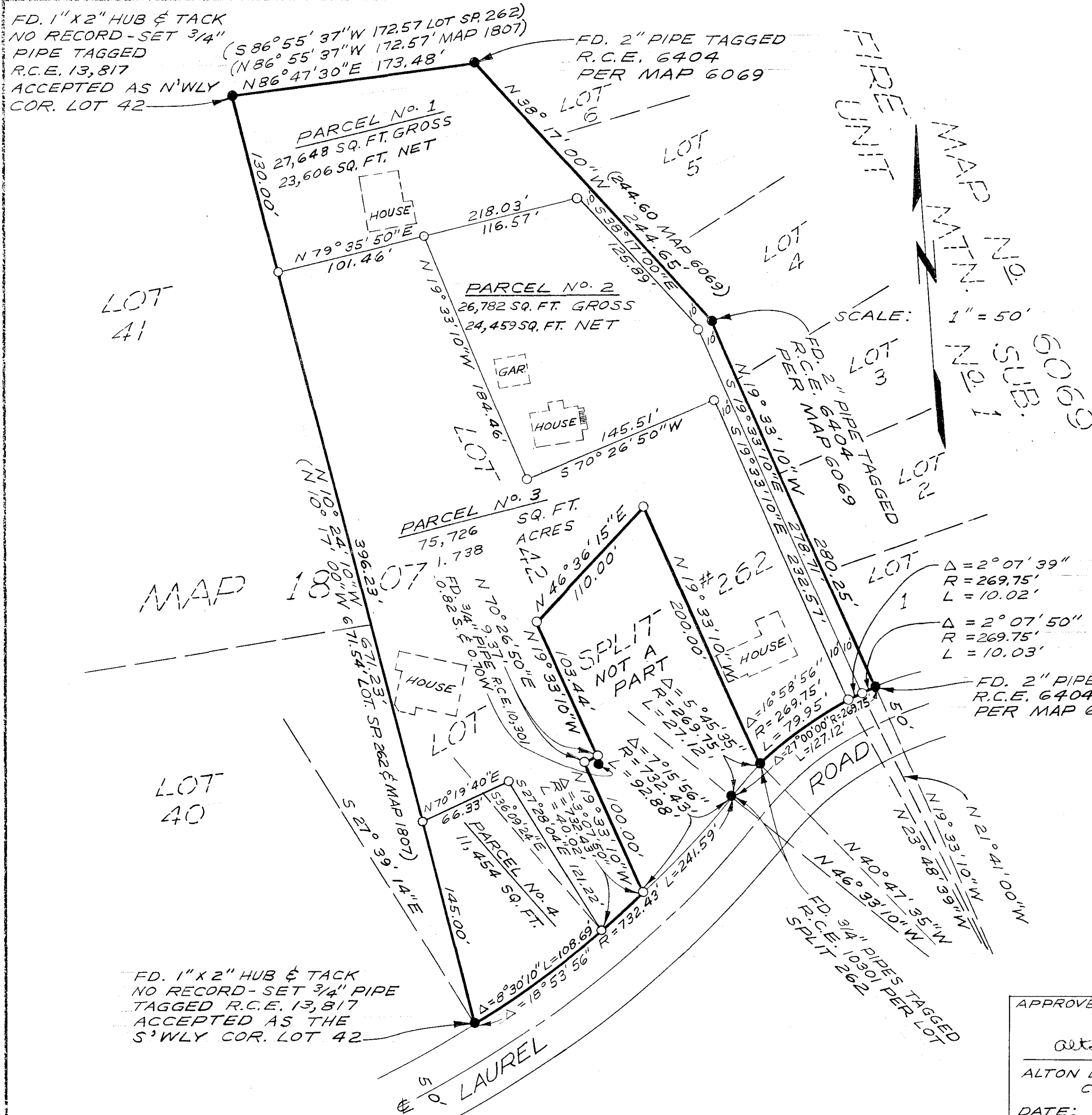


LOT SPLIT MAP No. 481



LEGAL DESCRIPTION:
 PORTION OF LOT 42, MAP 1807,
 NORTH CARLSBAD, IN THE CITY OF
 OCEANSIDE, COUNTY OF SAN DIEGO,
 STATE OF CALIFORNIA

LEGEND:
 ● FOUND AS SHOWN
 ○ SET 3/4" PIPE TAGGED R.C.E. 13,817

BASIS OF BEARINGS:
 THE NORTHEASTERLY LINE OF LOT 42
 PER MAP 6069 I.E. N 19° 33' 10" W

APPROVED BY THE
 PLANNING COMMISSION
 this 7TH day of OCT 1968
 Resolution No. 68-182
 Secretary *K. Baerly*

APPROVED:
Alton Ruden
 ALTON L. RUDEN, R.C.E. 10,163
 CITY ENGINEER
 DATE: 11-26-1968
 OCEANSIDE, CALIFORNIA

LOT SPLIT MAP		
FOR		
MRS. OMALEE SHIRLEY		
OCEANSIDE, CALIFORNIA		
DRAWN: HP	E. BRIAN SMITH ENGINEERS 528 SOUTH HILL STREET OCEANSIDE, CALIFORNIA	DATE: 11-18-68
CHECKED: H.L.T.	<i>E. Brian Smith</i>	SCALE: 1"=50'
APPROVED: E.B.S.	E. BRIAN SMITH, R.C.E. 13,817	SHEET: 1 OF 1