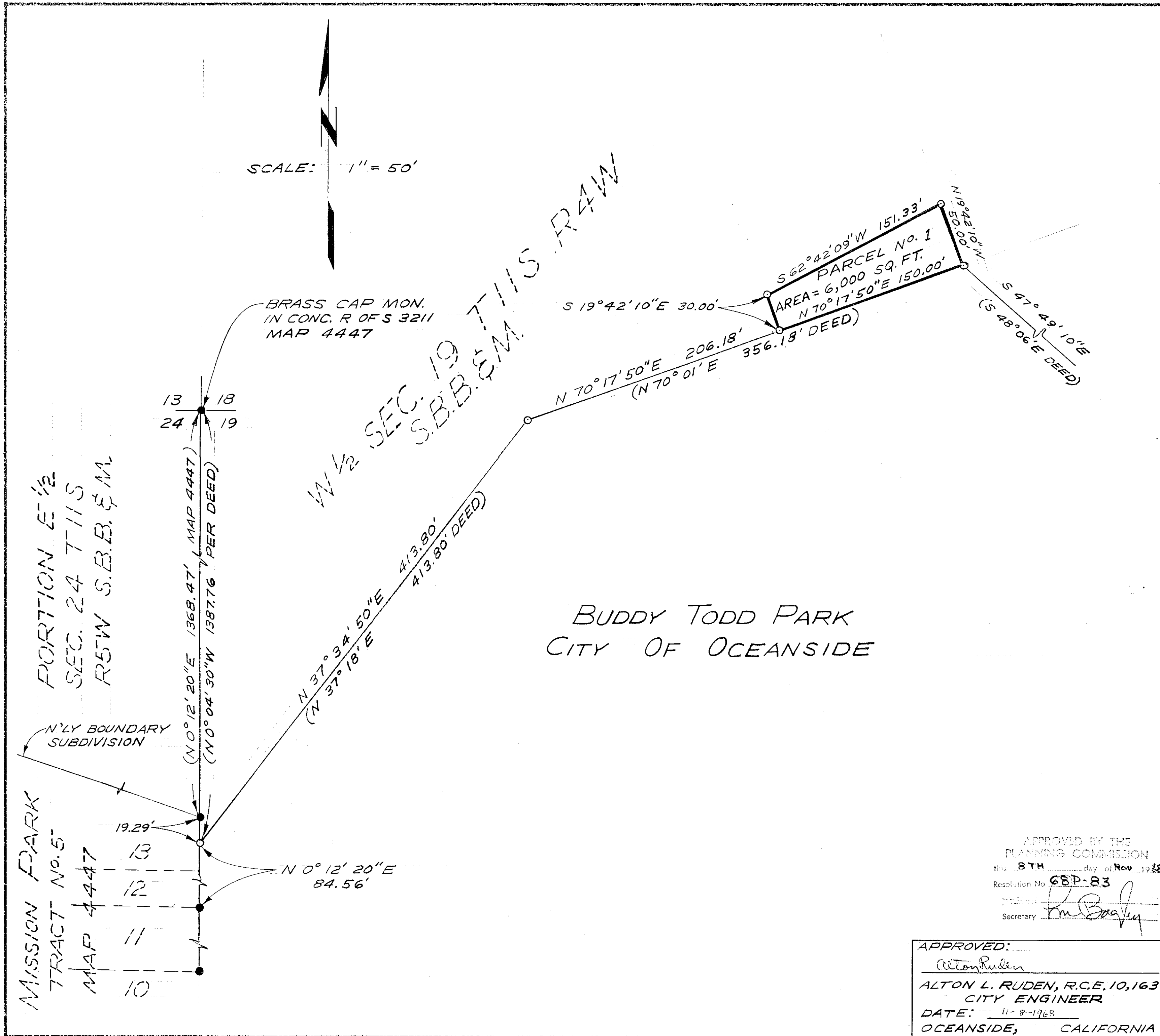


# LOT SPLIT MAP No. 479



**LEGAL DESCRIPTION:**  
 A PORTION OF THE WEST 1/2 OF SECTION 19, T 11 S, R 4 W, S.B.B. & M. CITY OF OCEANSIDE, COUNTY OF SAN DIEGO, STATE OF CALIFORNIA

**LEGEND:**

- FOUND PER MAP 4447
- SET 1" PIPE TAGGED R.C.E. 13,817

**BASIS OF BEARINGS:**  
 THE NORTH SOUTH LINE BETWEEN SECTIONS 24 AND 19 PER MAP 4447 I.E. N 0° 12' 20" E

**BASIS OF SURVEY:**  
 SURVEY OF BUDDY TODD PARK BY CITY OF OCEANSIDE

**NOTE:**  
 ACCESS APPROVAL GRANTED BY OCEANSIDE CITY COUNCIL OCT. 9, 1968

APPROVED BY THE PLANNING COMMISSION  
 this 8TH day of Nov 1968  
 Resolution No. 68P-83  
 Secretary *[Signature]*

<b>LOT SPLIT MAP</b>		
FOR		
<b>T.V. POWER OF NORTH COUNTY</b>		
OCEANSIDE, CALIFORNIA		
<b>DRAWN:</b> HP	<b>E. BRIAN SMITH ENGINEERS</b> 528 SOUTH HILL STREET OCEANSIDE, CALIFORNIA	<b>DATE:</b> 10-16-68
<b>CHECKED:</b> H.L.T.	<i>[Signature]</i>	<b>SCALE:</b> 1" = 50'
<b>APPROVED:</b> EBS	<b>E. BRIAN SMITH, R.C.E. 13,817</b>	<b>SHEET:</b> 1 OF 1

**APPROVED:**  
*[Signature]*  
**ALTON L. RUDEN, R.C.E. 10,163**  
 CITY ENGINEER  
 DATE: 11-8-1968  
 OCEANSIDE, CALIFORNIA