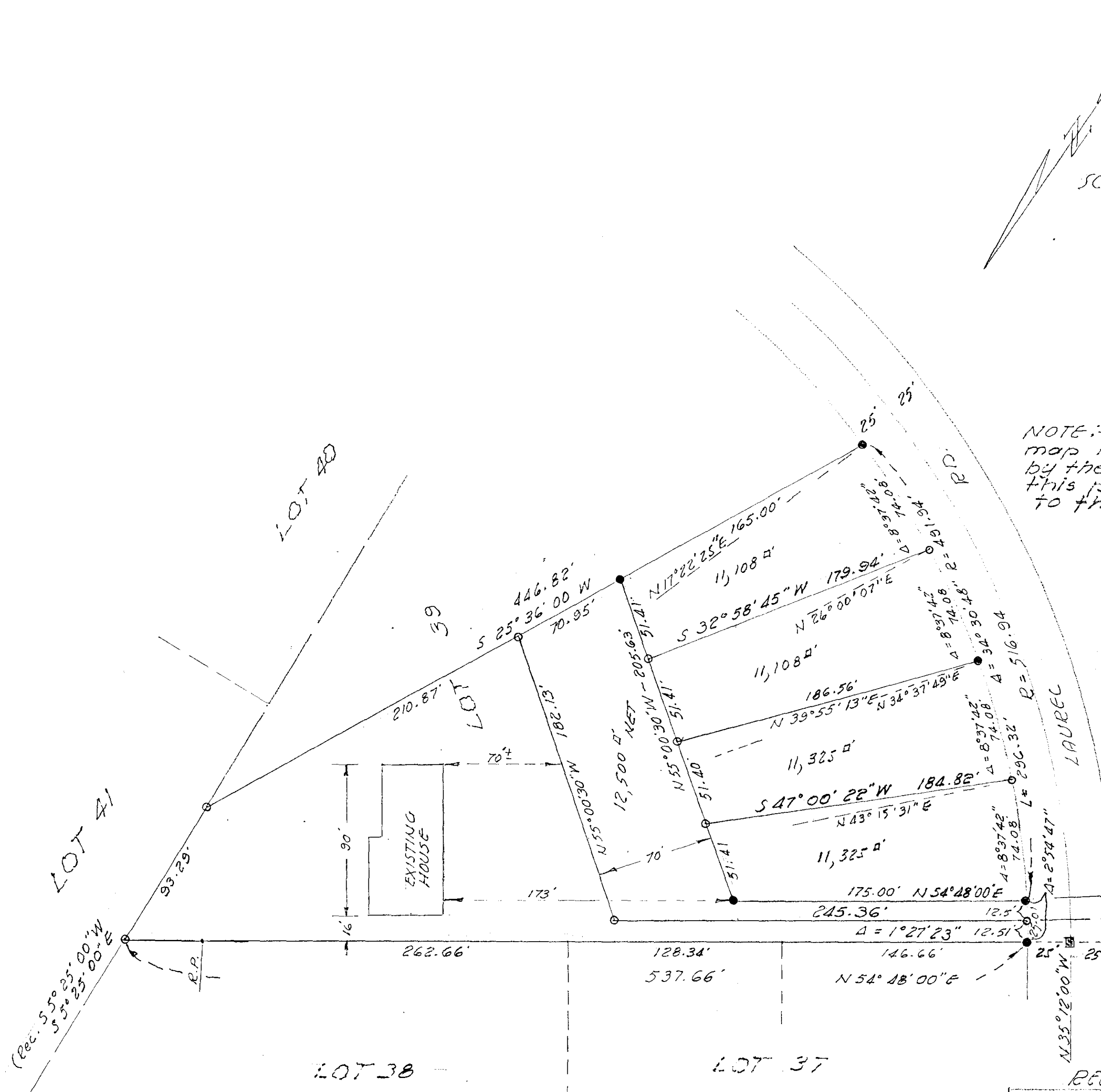


SPLIT LOT MAP #476

SCALE 1" = 50'



NOTE:- The shaded lines on this map indicates splits approved by the County of S.D. prior to this portion being annexed to the City of Oceanside

- LEGEND
- Mon. Pd. Tagged R.C.E 7604
 - Set 3/4" I. Pipe & Tag R.C.E 10301

BASIS OF BEARINGS OF THIS SURVEY IS THE N¹/₄ Line of Lot No 39, MAP 1807 I.E. N 54° 48' 00" E

N 51° 53' 13" E (RAD)
 N 53° 20' 37" E (RAD)
 B.C
 Fd. Conc. Mon.

REQUESTED BY MRS. E.A. BELL
 CITY OF OCEANSIDE, CALIF.

SURVEY OF A POR. OF LOT 39
 NORTH CARLSBAD MAP 1807
 SOUTH COAST ENGINEERING SERVICE
 W.A. AYER RCE #10301
 DATE SEPT. 11, 1968

APPROVED BY THE
 PLANNING COMMISSION
 this 7th day of OCT. 1968
 Resolution No. 68P81
 Secretary Mrs. Baerly

APPROVED:-
 [Signature]
 CITY ENG. RCE 10301
 DATE

L.E.M.B.