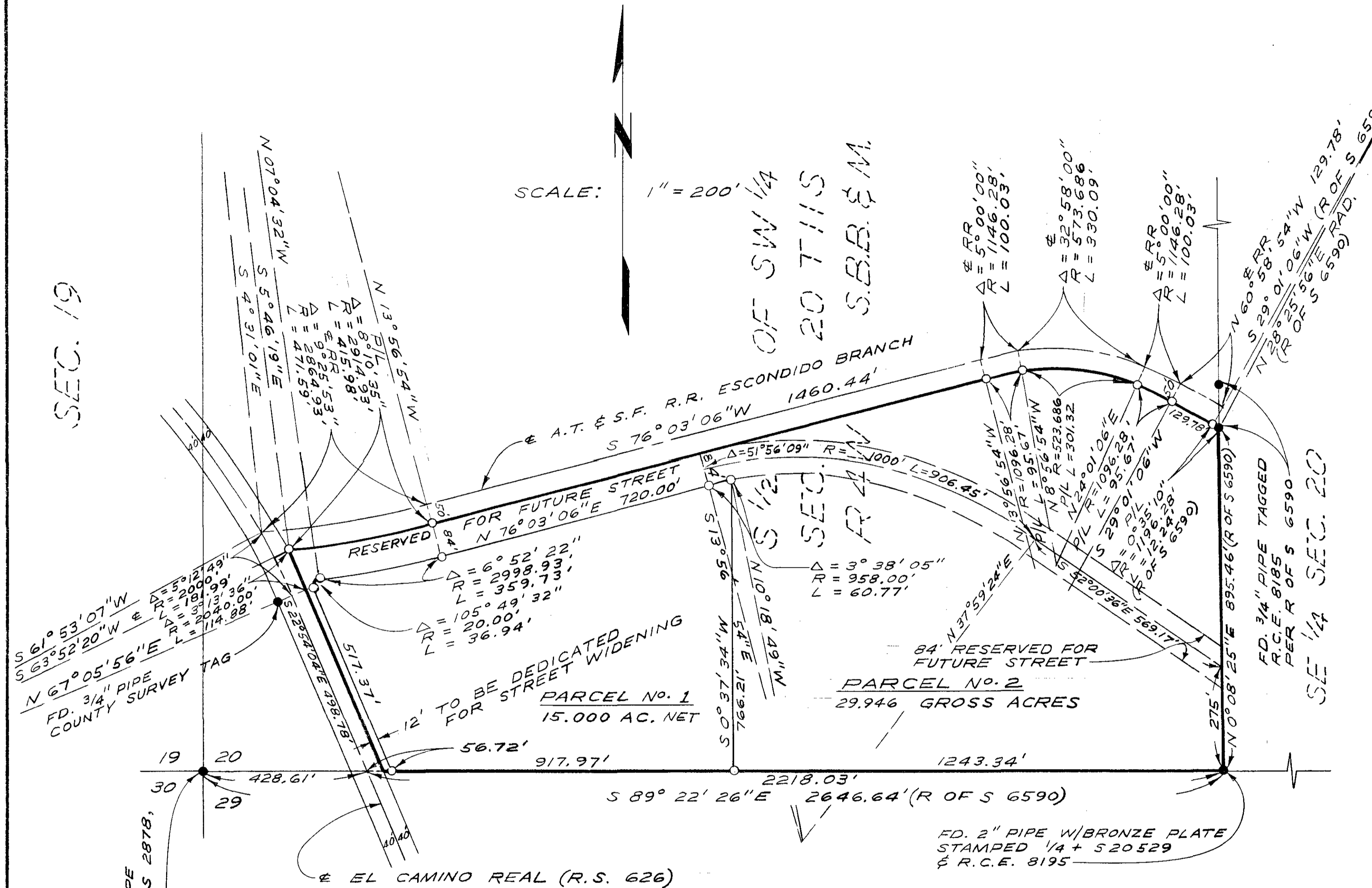


LEGAL DESCRIPTION:
 PORTION OF S 1/2 SW 1/4 OF SECTION
 20, T 11 S R 4 W, S.B.B. & M. CITY
 OF OCEANSIDE, COUNTY OF SAN DIEGO,
 STATE OF CALIFORNIA

LEGEND:
 ● FD. AS SHOWN
 ○ SET 1" PIPE TAGGED R.C.E. 13,817

BASIS OF BEARINGS:
 SOUTH LINE OF THE S 1/2 OF THE
 SOUTH WEST 1/4 PER R OF S 6590
 I.E. S 89° 22' 26" E



HENIE HILLS UNIT No. 1
 MAP No. 2976

LOT SPLIT MAP		
FOR MR. JOHN ROMO OCEANSIDE, CALIFORNIA		
APPROVED: Alton L. Ruden	DRAWN: E. BRIAN SMITH ENGINEERS 528 SOUTH HILL STREET	DATE: 9-25-68
CHECKED: H.L.T.	OCEANSIDE, CALIFORNIA	SCALE: 1" = 200'
DATE: 10-22-68 OCEANSIDE, CALIFORNIA	APPROVED: E.B.S. E. BRIAN SMITH, R.C.E. 13,817	SHEET: 1 OF 1