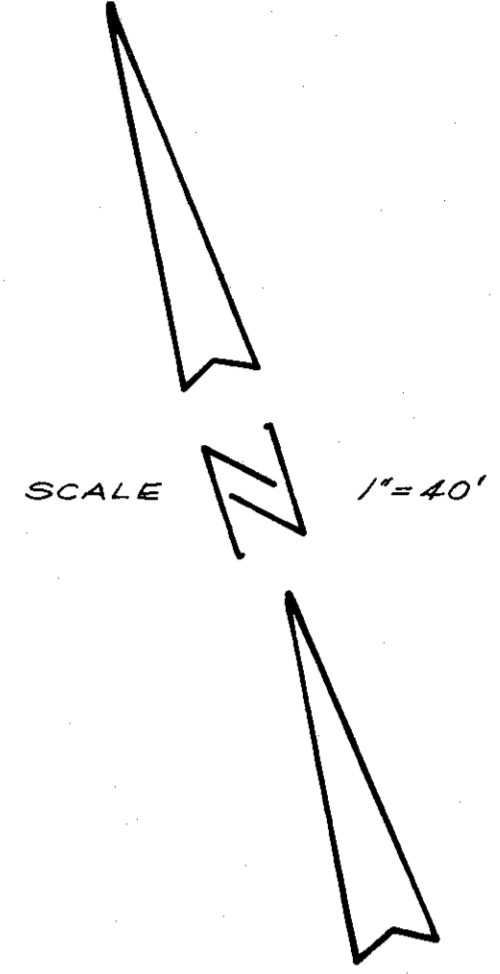
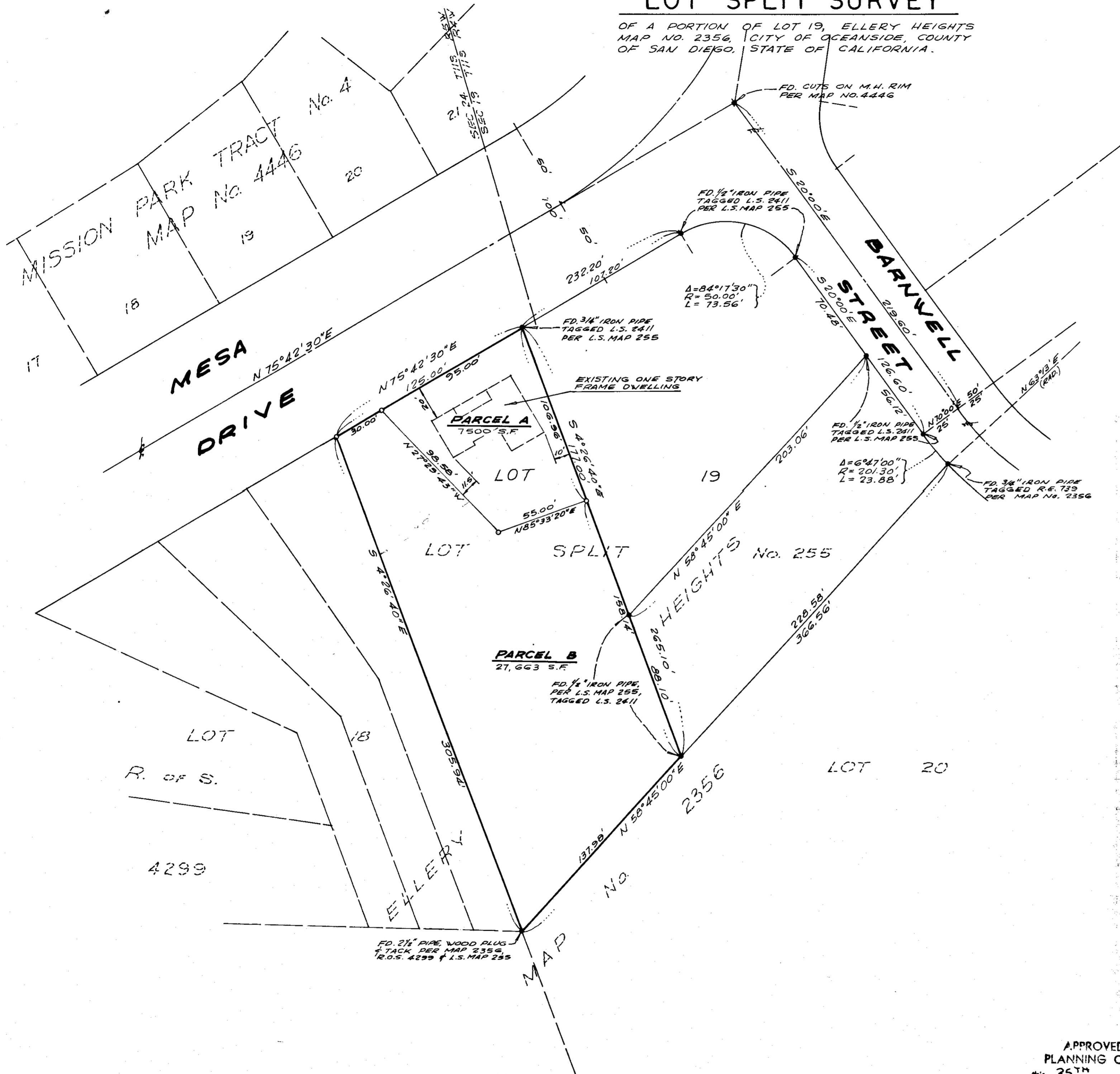


LOT SPLIT SURVEY

OF A PORTION OF LOT 19, ELLERY HEIGHTS
MAP NO. 2356, CITY OF OCEANSIDE, COUNTY
OF SAN DIEGO, STATE OF CALIFORNIA.



LEGEND:

- — INDICATES FOUND MONUMENTS AS NOTED
- — INDICATES SET 1" IRON PIPE, CONCRETE CORE CENTERED WITH COPPER DISC STAMPED L.S. 2940 AT ALL LOT CORNERS

NOTE:

This map correctly represents a survey made by us in conformance with the requirements of Chapter 15, Div. 3, of the Business and Professions Code, at the request of MR. WILLIAM GOOKIN in JULY, 1967. Also, corner monuments as indicated will be set within 30 days from approval of this map by the City of Oceanside.

Donald H. Holly
DONALD H. HOLLY L.S. 2940

I, ALTON L. RUDEN City Engineer of the City of Oceanside, California, hereby state that I have examined this map and found that it appears to meet said City's requirements as to accuracy of mathematical data and that it does not appear to be in conflict with Section 11535 of the Subdivision Map Act.

A. L. RUDEN R.C.E. 10,183

BASIS OF BEARINGS:

THE BASIS OF BEARINGS FOR THIS MAP IS THE CENTERLINE OF MESA DRIVE AS SHOWN ON SHEET 3 OF ELLERY HEIGHTS MAP NO. 2356, OCEANSIDE, CALIFORNIA.
I.E. N 75°42'30"E.

LOT SPLIT MAP

PREPARED FOR: MR. WILLIAM GOOKIN 2849 MESA DRIVE OCEANSIDE, CALIFORNIA			
DRAWN BY: O.A.S.	APPROVED <i>Alton L. Ruden</i> A.L. RUDEN	CITY ENGINEER 9-26-1967 R.C.E. 10,183	DATE: JULY 31, 1967
CHK'D BY: DONALD H. HOLLY LICENSED SURVEYOR CARLSBAD, CALIFORNIA	PREPARED BY: DONALD H. HOLLY LICENSED SURVEYOR CARLSBAD, CALIFORNIA		SCALE 1" = 40' SHEET 1 OF 1
APPROVED BY THE PLANNING COMMISSION this 25 TH day of SEPT. 1967 Resolution No. 67P-73 Secretary	JOB NO. 67.004		