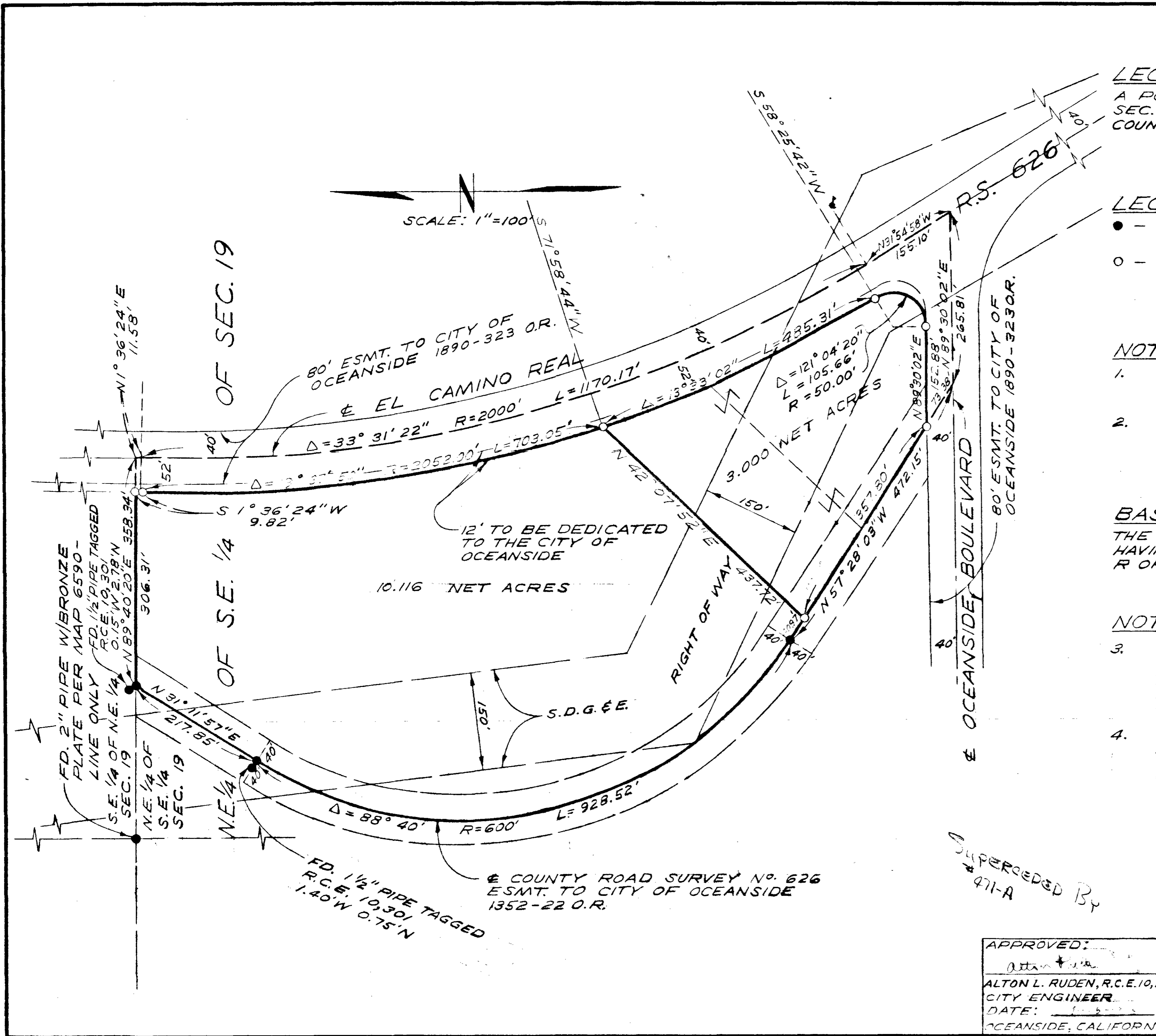


LOT SPLIT MAP No. 471



LEGAL DESCRIPTION:
 A PORTION OF THE N.E. 1/4 OF THE S.E. 1/4 OF SEC. 19, T.11 S., R.4W, CITY OF OCEANSIDE, COUNTY OF SAN DIEGO, STATE OF CALIFORNIA

LEGEND:
 ● - FD. 3/4" IRON PIPE TAGGED R.C.E. 8195 PER R OF S 6590 OR AS SHOWN
 ○ - SET 1" IRON PIPE TAGGED R.C.E. 13,817

NOTE:
 1. MONUMENTS SHOWN AS SET WILL BE SET AT TIME STREET IMPROVEMENTS ARE COMPLETED BUT NO LATER THAN JULY 1, 1969
 2. R.S. 626 APPARENTLY IS SHIFTED 1.0' ± EASTERLY BY R. OF S. 6590. NOTE EXISTING MONUMENTS SHOWN HEREON BUT NOT INDICATED ON R OF S 6590.

BASIS OF BEARINGS:
 THE SOUTH WESTERLY PROPERTY LINE HAVING A BEARING OF N 57° 28' 03" W PER R OF S 6590

NOTE:
 3. THIS LOT SPLIT MAP AMENDS LOT SPLIT MAP No. 454 BY MOVING THE DIVISION LINE NORTHERLY TO CHANGE THE 1.534 ACRE PARCEL TO A 3,000 ACRE PARCEL.
 4. STREET IMPROVEMENTS TEMPORARILLY DEFERED BY RESOLUTION No. 68-128, ADOPTED BY THE CITY COUNCIL OF THE CITY OF OCEANSIDE, AUGUST 28, 1968

LOT SPLIT MAP		
FOR TITLE INSURANCE & TRUST COMPANY AS TRUSTEE OCEANSIDE, CALIFORNIA		
APPROVED: <i>Alton L. Ruden</i> ALTON L. RUDEN, R.C.E. 10,163 CITY ENGINEER DATE: 1-5-68 OCEANSIDE, CALIFORNIA	DRAWN: HP CHECKED H.L.T. APPROVED: E.B.S.	E. BRIAN SMITH ENGINEERS 528 SOUTH HILL STREET OCEANSIDE, CALIFORNIA <i>E. Brian Smith</i> E. BRIAN SMITH, R.C.E. 13,817
DATE: 1-23-68	SCALE: 1" = 100'	SHEET: 1 OF 1