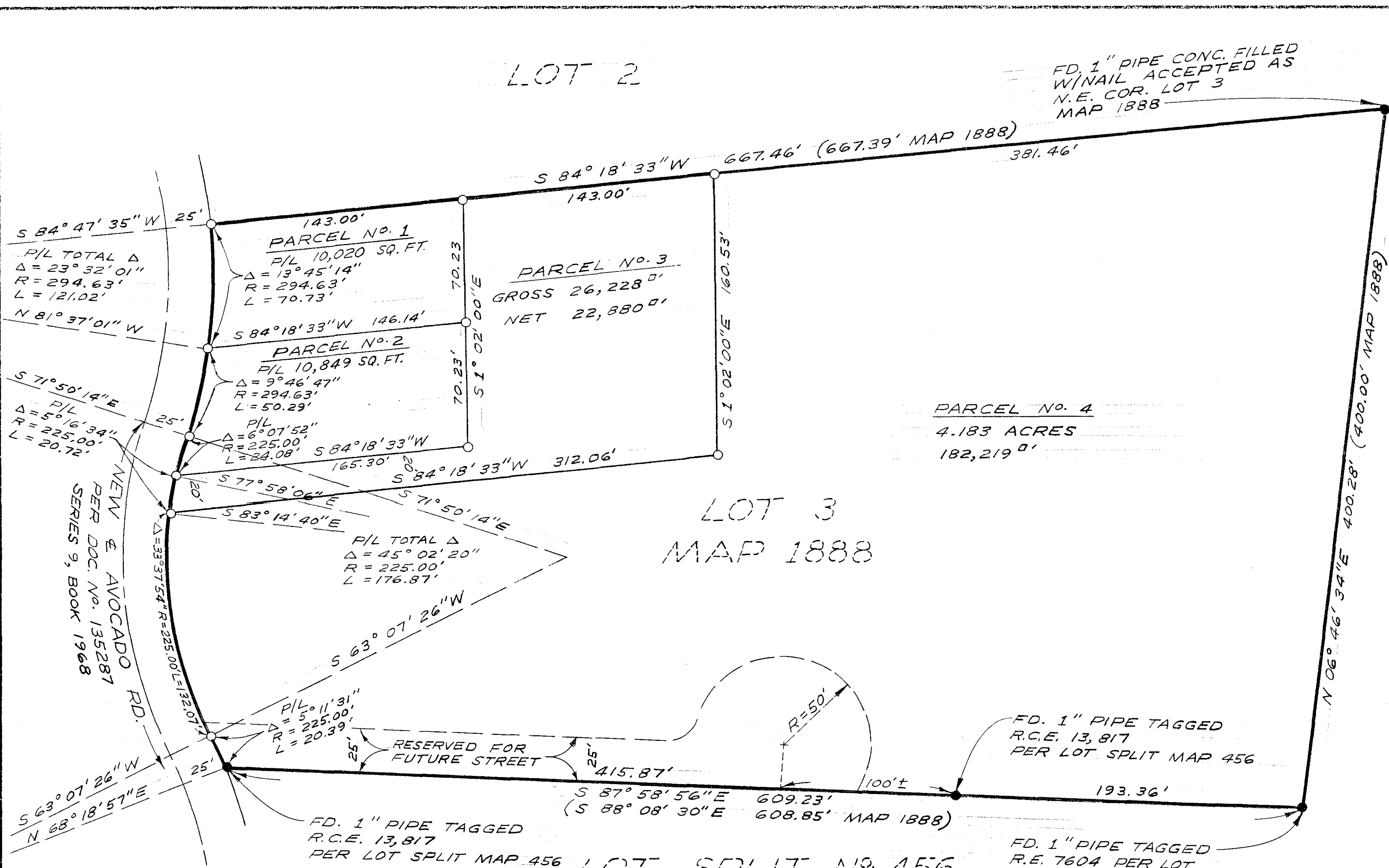


# LOT SPLIT MAP No. 469

LOT 2



**LEGAL DESCRIPTION.**  
 LOT 3, BLOCK C, NORTH CARLSBAD ANNEX, MAP No. 1888 IN THE CITY OF OCEANSIDE, COUNTY OF SAN DIEGO, STATE OF CALIFORNIA

**LEGEND:**

- FOUND AS SHOWN
- SET 3/4" PIPE TAGGED R.C.E. 13,817

**BASIS OF BEARINGS:**  
 THE EAST LINE OF LOT 3; I.E. N 6° 46' 34" E PER MAP 1888

SCALE: 1" = 40'

NEW & AVOCADO RD. PER DOC. NO. 135287 SERIES 9, BOOK 1968

FD. 1" PIPE CONC. FILLED W/NAIL ACCEPTED AS N.E. COR. LOT 3 MAP 1888

FD. 3/4 IRON PIPE TAGGED R.C.E. 6486 MAP

FD. 1" PIPE TAGGED R.C.E. 13,817 PER LOT SPLIT MAP 456

FD. 1" PIPE TAGGED R.E. 7604 PER LOT SPLIT MAP 456 ACCEPTED AS S.E. COR. LOT 3

LOT SPLIT No. 456  
 LOT 4

<b>LOT SPLIT MAP</b>			
FOR			
<b>ROBERT D. GILLIAM</b>			
OCEANSIDE,		CALIFORNIA	
DRAWN:	E. BRIAN SMITH ENGINEERS	DATE:	8-23-68
HP	528 SOUTH HILL STREET	SCALE:	1" = 40'
CHECKED:	OCEANSIDE, CALIFORNIA	SHEET:	1 OF 1
H.L.T.	<i>E. Brian Smith</i>		
APPROVED:	E.B.S. E. BRIAN SMITH, R.C.E. 13,817		

APPROVED BY THE PLANNING COMMISSION  
 this 23<sup>rd</sup> day of JULY 1968  
 Resolution No. 68-756  
 Secretary *[Signature]*

APPROVED:  
*Alton L. Ruden*  
 ALTON L. RUDEN, R.C.E. 10,163  
 CITY ENGINEER  
 DATE: 4-24-1969  
 OCEANSIDE, CALIFORNIA