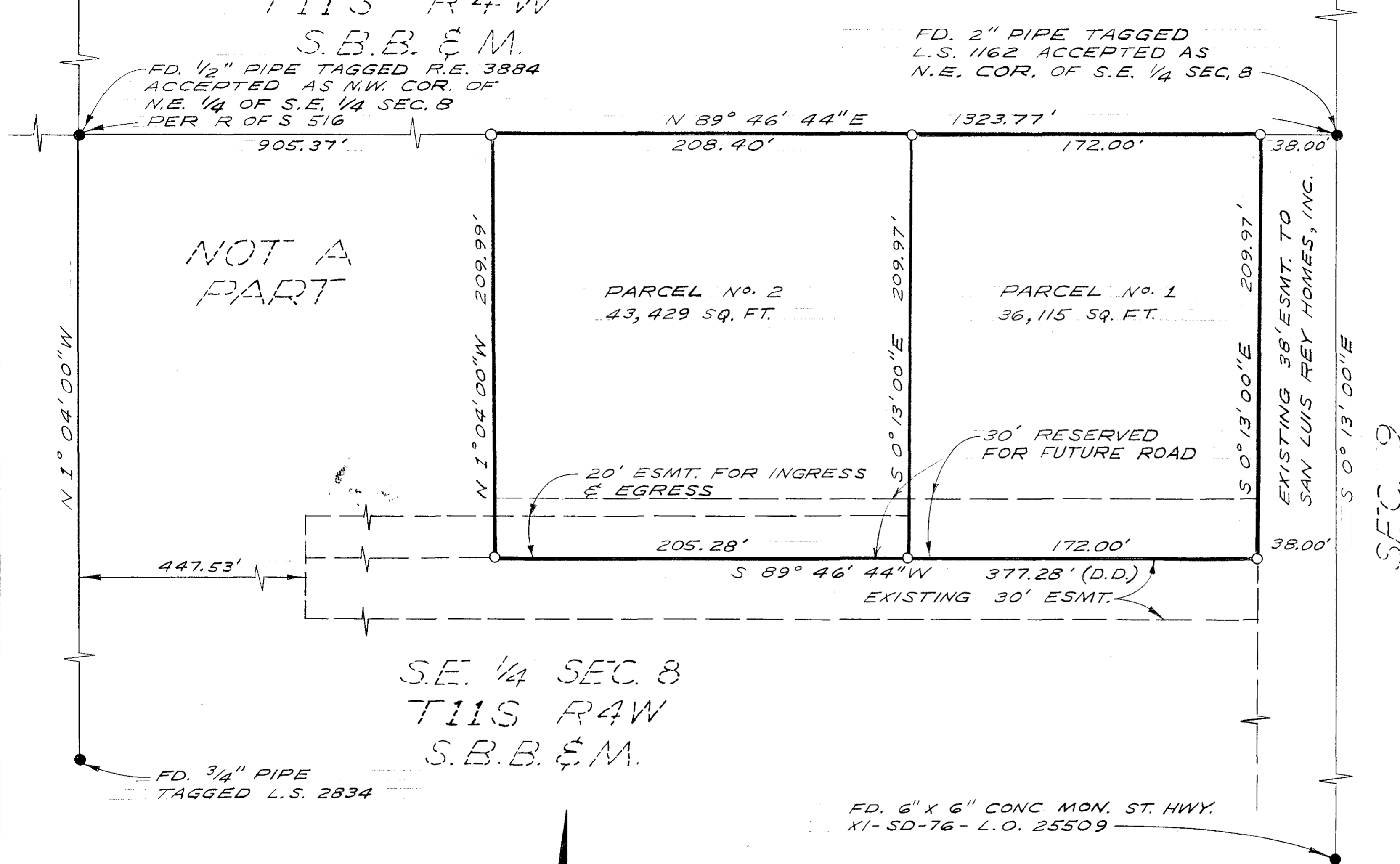


N.E. 1/4 SEC. 8
T11S R4W
S.B.B. & M.

(SAN LUIS REY HOMES, INC.)

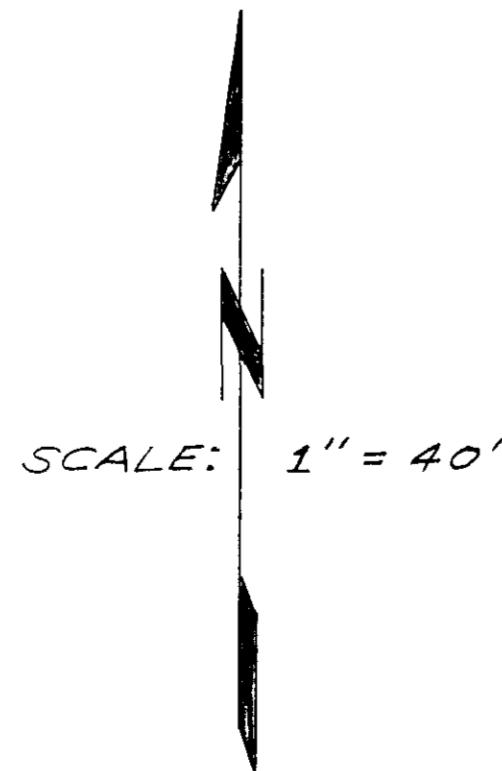
LEGAL DESCRIPTION:
PORTION OF THE S.E. 1/4 OF SEC. 8,
T11S R4W S.B.B. & M. CITY OF
OCEANSIDE, COUNTY OF SAN DIEGO,
STATE OF CALIFORNIA



LEGEND:

- FOUND AS SHOWN
- SET 1" PIPE TAGGED R.C.E. 13,817
- (D.D.) DEED CALL

BASIS OF BEARINGS:
THE WEST LINE OF THE E 1/2 OF THE
S.E. 1/4 SEC. 8, T11S R4W S.B.B. & M.
PER L.S. 203 I.E. N 1° 04' 00" W



APPROVED BY THE
PLANNING COMMISSION
this 15th day of JULY 1968
Resolution No. 142 P59
Secretary

LOT SPLIT MAP		
FOR		
SAN LUIS REY HOMES, INC.		
OCEANSIDE, CALIFORNIA		
APPROVED:	DRAWN:	DATE:
Alton & Ruden	HP	8-23-68
ALTON L. RUDEN, R.C.E. 10,163	E. BRIAN SMITH ENGINEERS	528 SOUTH HILL STREET
CITY ENGINEER	OCEANSIDE, CALIFORNIA	SCALE:
DATE: 8-30-1968	H.L.T.	1" = 40'
OCEANSIDE, CALIFORNIA	APPROVED:	SHEET:
	E. B. S.	1 OF 1
	E. BRIAN SMITH, R.C.E. 13,817	