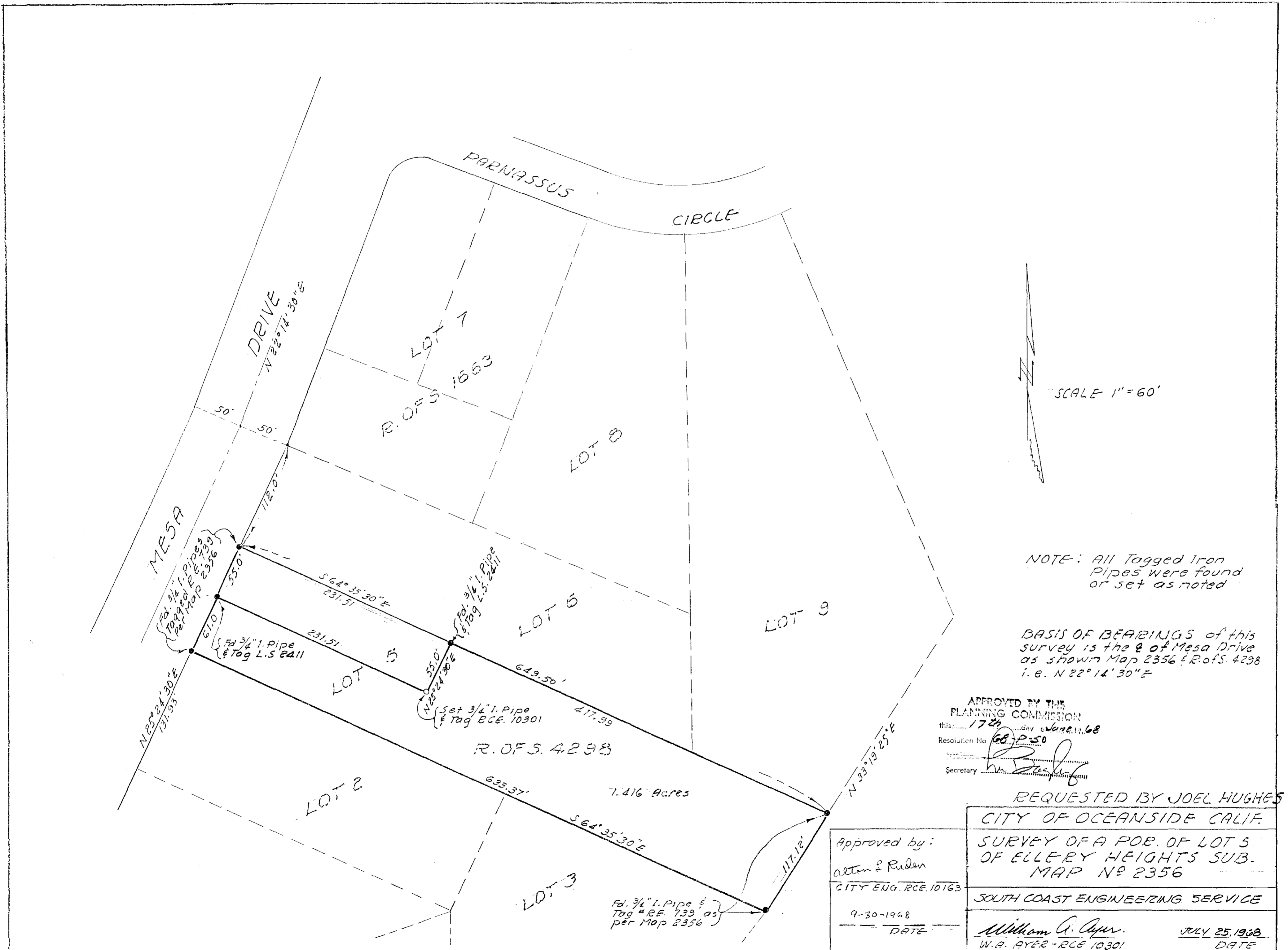


SPLIT LOT MAP #463



SCALE 1" = 60'

NOTE: All Tagged Iron Pipes were found or set as noted

BASIS OF BEARINGS of this survey is the E of Mesa Drive as shown Map 2356 & R. of S. 4298 i. e. N 22° 14' 30" E

APPROVED BY THE PLANNING COMMISSION
 this 17th day of June 1968
 Resolution No. 68-P-50
 Secretary *[Signature]*

REQUESTED BY JOEL HUGHES

CITY OF OCEANSIDE CALIF.
 SURVEY OF A POR. OF LOT 5 OF ELLERY HEIGHTS SUB. MAP NO 2356
 SOUTH COAST ENGINEERING SERVICE
William A. Ayer JULY 25, 1968
 W.A. AYER - RCE 10301 DATE

Approved by:
 Alton & Ruden
 CITY ENG. RCE 10163
 9-30-1968
 DATE

DRAWN BY D.M.F.B