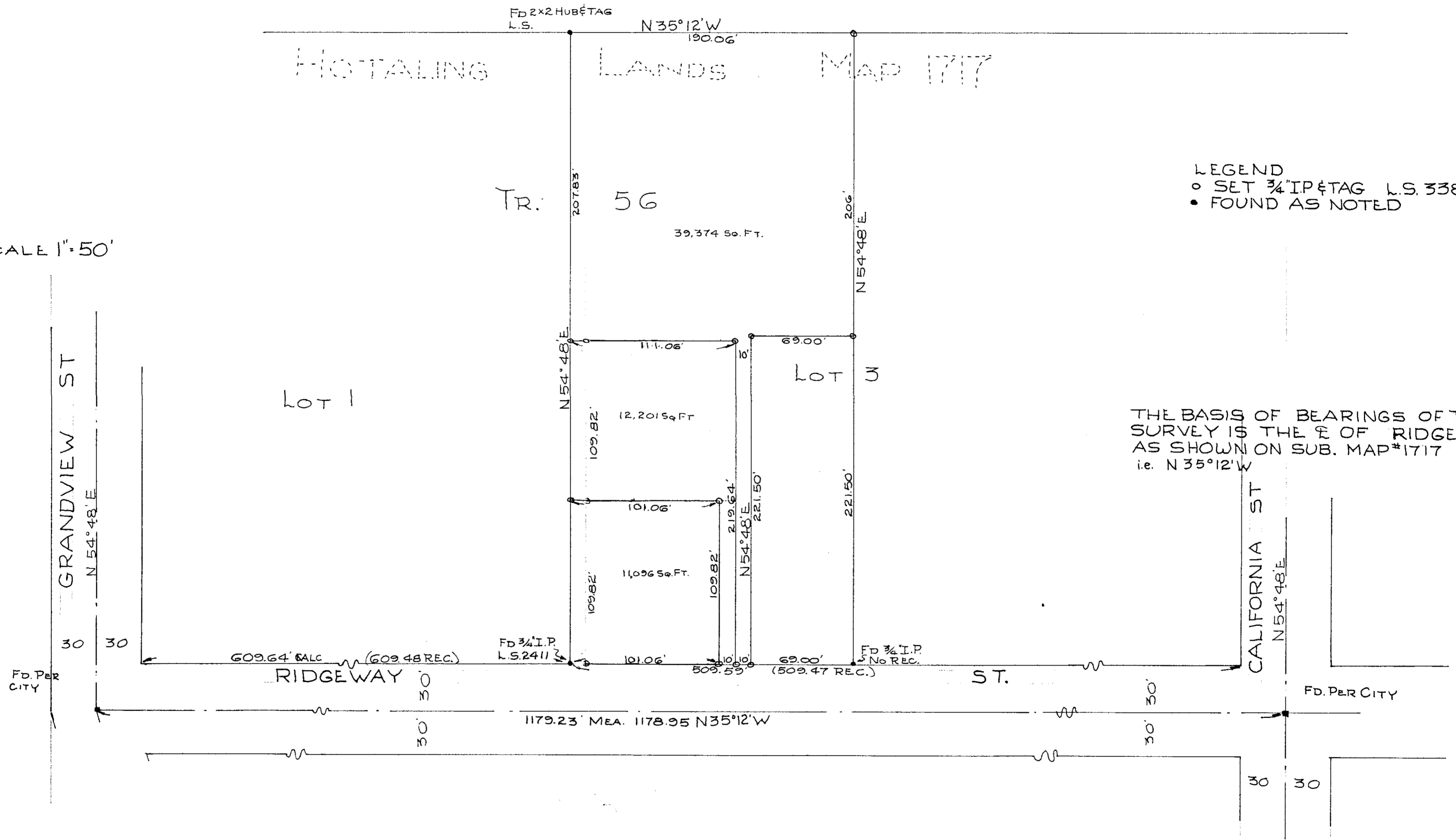


PORTION OF LOT 3 TR. 56
HOTALING LANDS MAP 1717

LEGEND
 ○ SET 3/4" I.P. & TAG L.S. 3380
 ● FOUND AS NOTED

SCALE 1" = 50'



THE BASIS OF BEARINGS OF THIS SURVEY IS THE E OF RIDGEWAY AS SHOWN ON SUB. MAP #1717 i.e. N 35° 12' W

LOT SPLIT MAP FOR

LUCILLE MORITZ

APPROVED BY THE PLANNING COMMISSION
 this 17th day of March 1968
 Resolution No. 68-011
 Secretary *Am Bailey*

Alton & Ruden
 APPROVED ALTON W. RUDEN
 CITY ENGINEER
 DATE 2-19-1968

Neal M Wessel
 NEAL M WESSEL L.S. 3380
 MARCH 28, 1968
 DATE