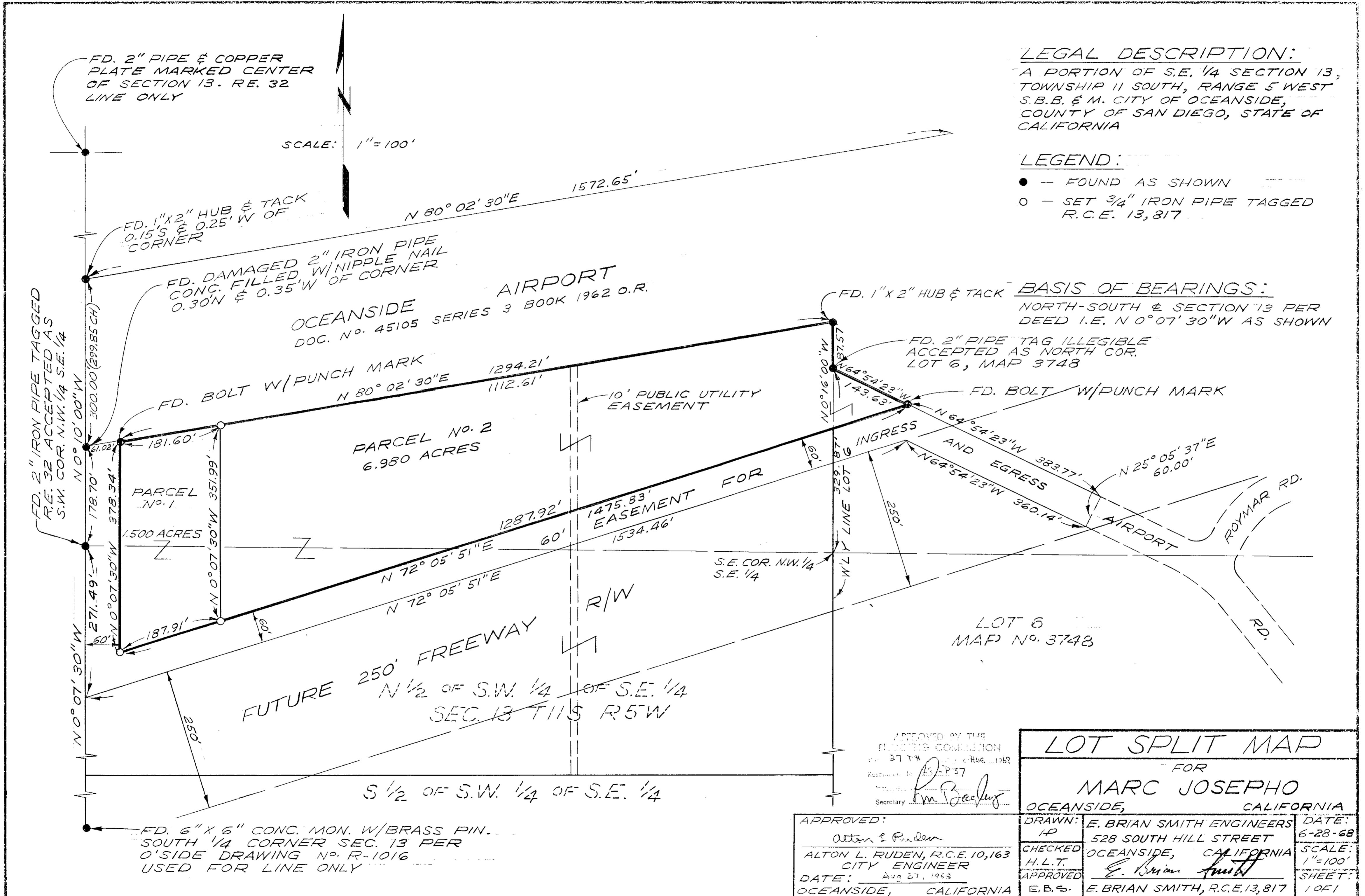


LOT SPLIT MAP No. 461



APPROVED BY THE PLANNING COMMISSION
 37 TH ... 1968
 Resolution No. 15-1937
 Secretary *[Signature]*

LOT SPLIT MAP		
FOR MARC JOSEPHO		
OCEANSIDE, CALIFORNIA		
APPROVED:	DRAWN:	DATE:
<i>Alton L. Ruden</i>	E. BRIAN SMITH ENGINEERS	6-28-68
ALTON L. RUDEN, R.C.E. 10,163 CITY ENGINEER	528 SOUTH HILL STREET	SCALE:
DATE: Aug 27, 1968	OCEANSIDE, CALIFORNIA	1" = 100'
OCEANSIDE, CALIFORNIA	APPROVED: <i>[Signature]</i>	SHEET:
	E.B.S. E. BRIAN SMITH, R.C.E. 13,817	1 OF 1