

PLA-2-94

LOT SPLIT MAP No. 459

MAP 4269
10 11 12 13 14

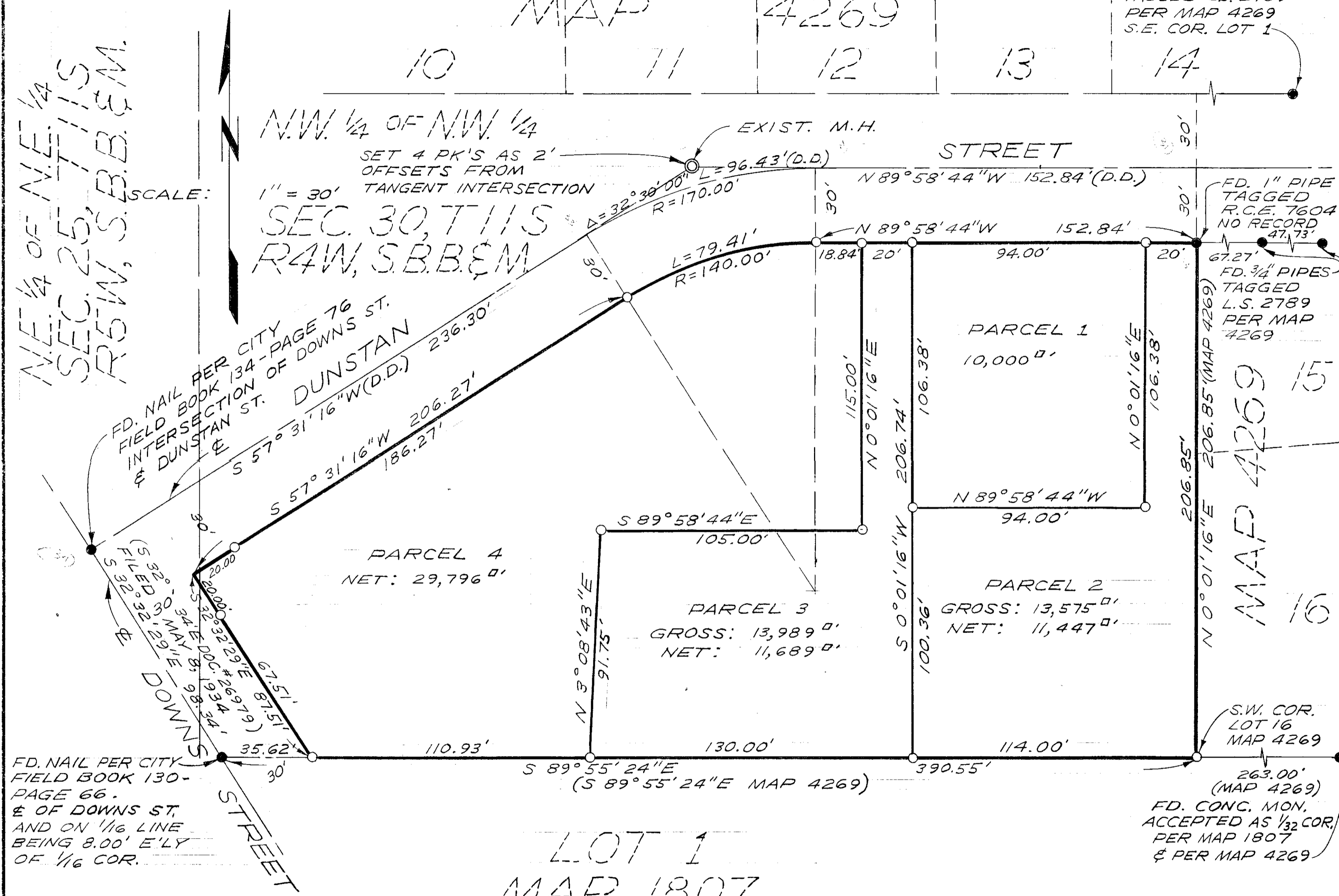
FD. 3/4" PIPE
TAGGED L.S. 2789
PER MAP 4269
S.E. COR. LOT 1

LEGAL DESCRIPTION:
PORTION OF THE N.W. 1/4 OF THE N.E. 1/4
OF SECTION 30, T11S, R4W, S.B.B. & M.
AND THE N.E. 1/4 OF THE N.E. 1/4 OF
SECTION 25, T11S, R5W, S.B.B. & M.,
CITY OF OCEANSIDE, COUNTY OF
SAN DIEGO, STATE OF CALIFORNIA

N.E. 1/4 OF N.E. 1/4
SEC. 25, T11S
R5W, S.B.B. & M.

N.W. 1/4 OF N.W. 1/4
SEC. 30, T11S
R4W, S.B.B. & M.

SCALE:
1" = 30'



LEGEND:
● FOUND AS SHOWN
○ SET 1" I.D. IRON PIPE TAGGED
R.C.E. 13,817
(D.D.) DEED BEARING OR DISTANCE

BASIS OF BEARING:
THE SOUTHERLY LINE OF RIDGECREST
- MAP 4269 I.E. N 89° 55' 24" W

LOT 1
MAP 1807

APPROVED BY THE
PLANNING COMMISSION
this 5th day of FEB. 1969
Resolution No. 68-PS
[Signature]
Secretary

LOT SPLIT MAP		
FOR		
JAMES D. DOWNS		
OCEANSIDE, CALIFORNIA		
APPROVED:	DRAWN:	DATE:
<i>Alton Ruden</i>	E. BRIAN SMITH ENGINEERS	6-3-68
ALTON L. RUDEN, R.C.E. 10,163	528 SOUTH HILL STREET	SCALE:
CITY ENGINEER	OCEANSIDE, CALIFORNIA	1" = 30'
DATE: 2-5-69	H.L.T. <i>[Signature]</i>	SHEET:
OCEANSIDE, CALIFORNIA	APPROVED:	1 OF 1
	E.B.S. E. BRIAN SMITH, R.C.E. 13,817	