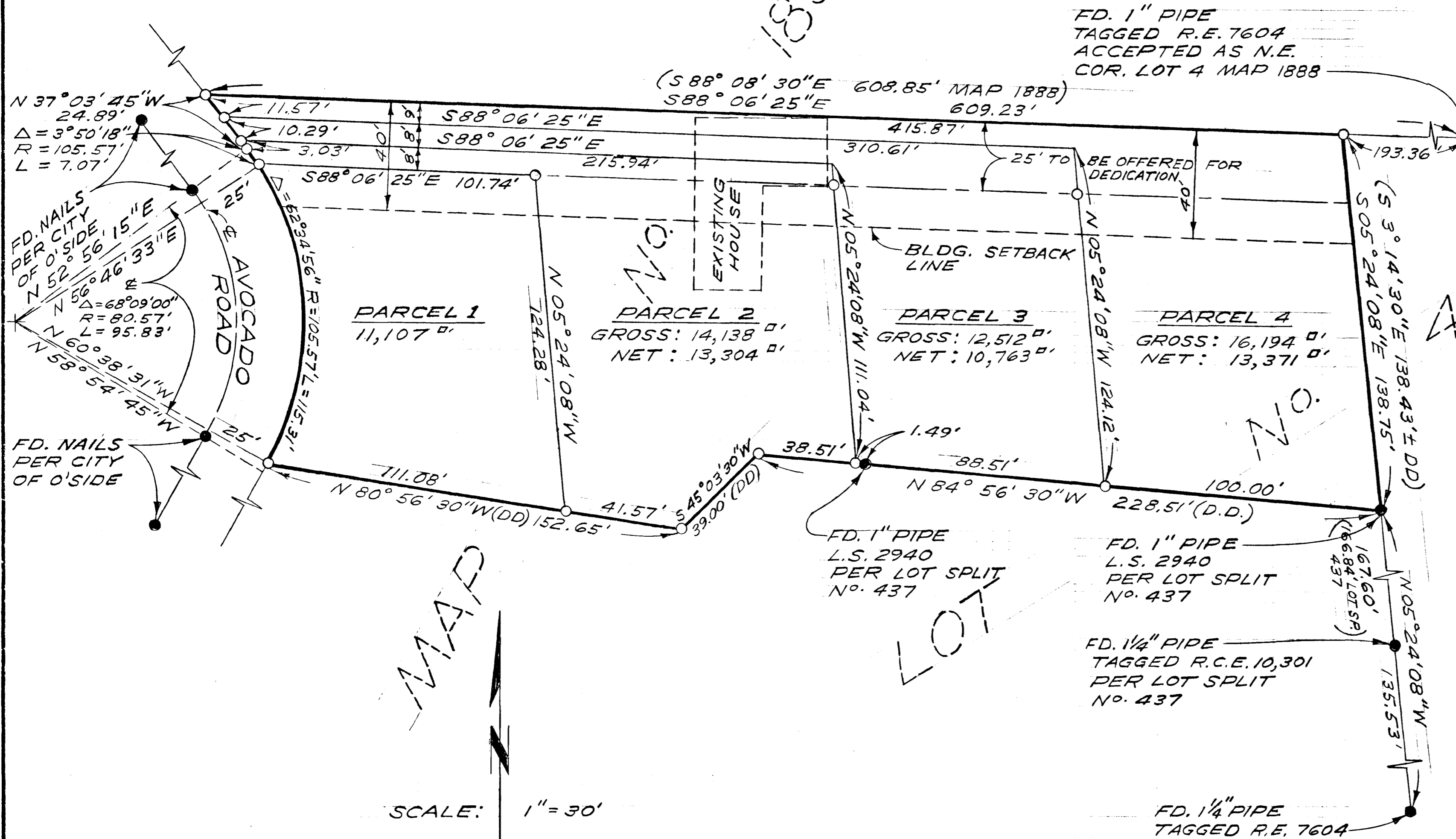


LOT No. 3

1888



**LEGAL DESCRIPTION:**  
 A PORTION OF LOT 4 IN BLOCK "C" OF NORTH CARLSBAD ANNEX, MAP No. 1888, IN THE CITY OF OCEANSIDE, COUNTY OF SAN DIEGO, STATE OF CALIFORNIA

**LEGEND:**  
 ● FD. AS SHOWN  
 ○ SET 1" O.D. PIPE TAGGED R.C.E. 13,817  
 (DD) DEED CALL

**NOTE:**  
 PROPERTY CORNERS ON STREET PROPERTY LINE TO BE SET AFTER STREET IMPROVEMENTS ARE COMPLETED.

**BASIS OF BEARINGS:**  
 THAT PORTION OF THE SOUTHERLY LINE BEARING N 84° 56' 30" W PER DEED

MAP  
 SCALE: 1" = 30'

(SEE L.S. 456A)

APPROVED BY THE PLANNING COMMISSION  
 this 4TH day of MARCH 1968  
 Resolution No. 68P-21  
 Secretary *E. Brian Smith*

APPROVED:  
*Alton L. Ruden*  
 ALTON L. RUDEN, R.C.E. 10,163  
 CITY ENGINEER  
 DATE: *Alton L. Ruden*  
 OCEANSIDE, CALIFORNIA

LOT SPLIT MAP		
FOR WAYNE GIBSON		
OCEANSIDE, CALIFORNIA		
DRAWN: <i>HP</i>	E. BRIAN SMITH ENGINEERS 528 SOUTH HILL STREET	DATE: 5-3-68
CHECKED: H.L.T.	OCEANSIDE, CALIFORNIA	SCALE: 1" = 30'
APPROVED: <i>E. Brian Smith</i>	E.B.S.	SHEET: 1 OF 1