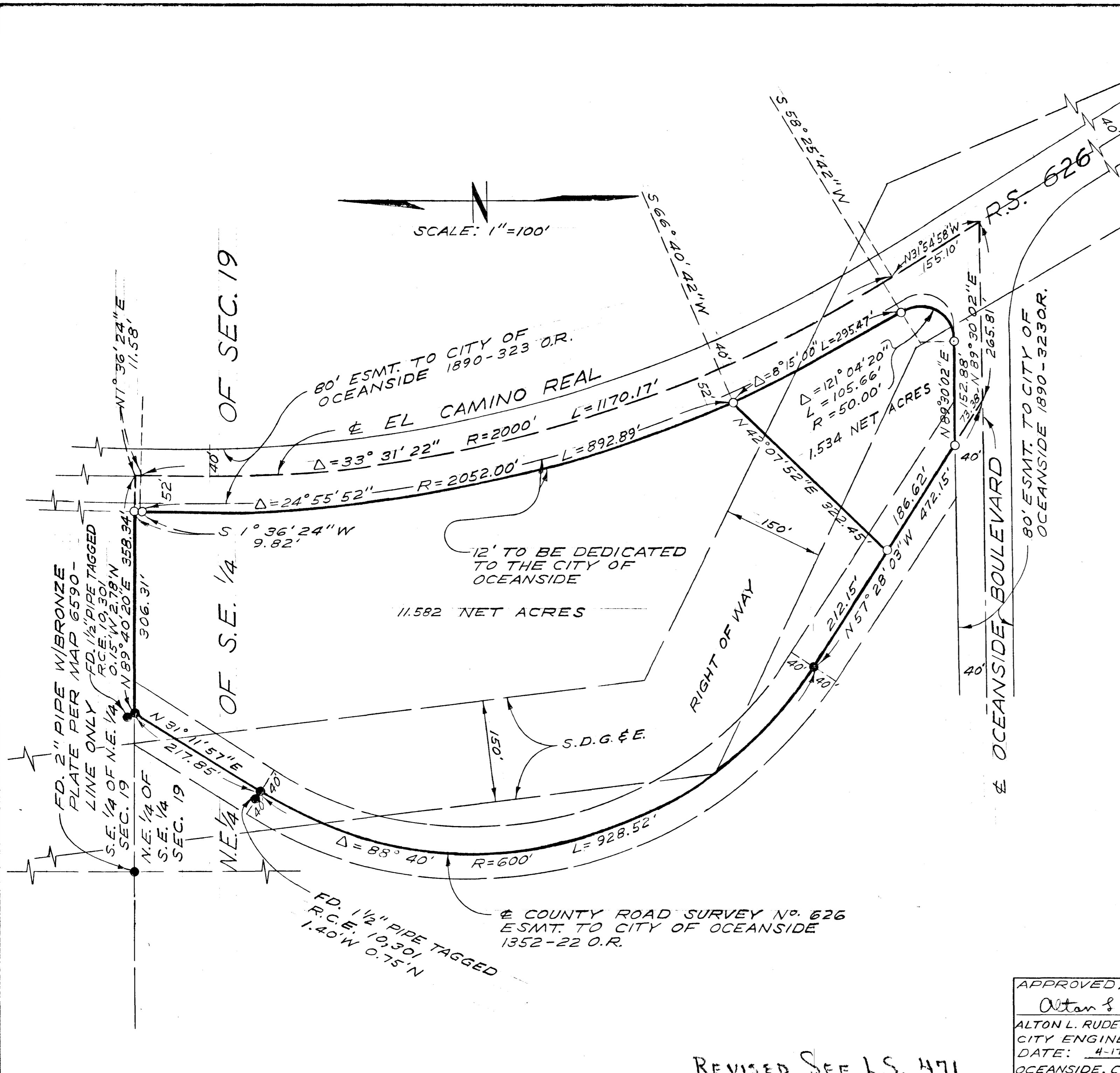


LOT SPLIT MAP NO. 454



LEGAL DESCRIPTION:

A PORTION OF THE N.E. 1/4 OF THE S.E. 1/4 OF SEC. 19, T.11 S., R.4W, CITY OF OCEANSIDE, COUNTY OF SAN DIEGO, STATE OF CALIFORNIA

LEGEND:

- - FD. 3/4" IRON PIPE TAGGED R.C.E. 8195 PER R OF S 6590 OR AS SHOWN
- - SET 1" IRON PIPE TAGGED R.C.E. 13,817

NOTE:

1. MONUMENTS SHOWN AS SET WILL BE SET AT TIME STREET IMPROVEMENTS ARE COMPLETED BUT NO LATER THAN JULY 1, 1969
2. R.S. 626 APPARENTLY IS SHIFTED 1.0' ± EASTERLY BY R. OF S. 6590. NOTE EXISTING MONUMENTS SHOWN HEREON BUT NOT INDICATED ON R OF S 6590.

BASIS OF BEARINGS:

THE SOUTH WESTERLY PROPERTY LINE HAVING A BEARING OF N 57° 28' 03" W PER R OF S 6590

LOT SPLIT MAP		
FOR TITLE INSURANCE & TRUST COMPANY AS TRUSTEE		
OCEANSIDE, CALIFORNIA		
APPROVED:	DRAWN:	DATE:
<i>Alton & Ruden</i>	E. BRIAN SMITH ENGINEERS HP	4-3-68
ALTON L. RUDEN, R.C.E. 10,163 CITY ENGINEER DATE: 4-17-1968	CHECKED: H.I.T.	SCALE: 1" = 100
	APPROVED: E.B.S.	SHEET: 1 OF 1
	<i>E. Brian Smith</i>	E. BRIAN SMITH, R.C.E. 13,817

REVISED SEE L.S. 471